

Harborough Local Plan

**Duty to Cooperate Statement
of Compliance**

January 2025

Contents

1.0	Introduction	3
1.1	Purpose of the Statement of Compliance	3
1.2	Requirements of the Duty to Cooperate	4
1.3	Prescribed Duty to Cooperate bodies	5
2.0	Duty to Cooperate Activities	6
3.0	Duty to Cooperate engagement with surrounding local authorities and prescribed Duty to Cooperate bodies.....	10
3.1	Introduction	10
3.2	Engagement with Leicestershire local authorities	10
3.3	Engagement with non-Leicestershire local authorities	27
3.4	Engagement with prescribed Duty to Cooperate bodies	32
4.0	Strategic and cross-boundary matters	39
4.1	Identification of strategic and cross boundary matters	39
5.0	Duty to Cooperate Statements of Common Ground	45
5.1	Conclusion	48
6.0	Appendices	49

1.0 Introduction

1.1 Purpose of the Statement of Compliance

- 1.1.1 The Harborough Local Plan Duty to Cooperate Statement of Compliance demonstrates how Harborough District Council has complied with the requirements of the Duty to Cooperate throughout the production and progression of the Local Plan.
- 1.1.2 This Statement of Compliance sets out how the Council has engaged constructively, actively and on an ongoing basis with surrounding authorities and prescribed Duty to Cooperate bodies on strategic and cross boundary matters during the preparation of the Plan, and the outcomes arising from this engagement. A timeline of Duty to Cooperate related activities is presented within Appendix 1.
- 1.1.3 This Statement of Compliance will form part of the Local Plan evidence base.

1.2 Requirements of the Duty to Cooperate

- 1.2.1 The Duty to Cooperate, introduced under the Localism Act 2011, is a legal duty for local planning authorities, county councils and relevant bodies to ‘engage constructively, actively and on an ongoing basis in any process’ including the preparation of development plan documents (Section 33A of the Planning and Compulsory Purchase Act 2004).
- 1.2.2 The National Planning Policy Framework (NPPF, December 2024) states that local planning authorities should engage with relevant bodies to meet the Duty to Cooperate, including elected Mayors and combined authorities, infrastructure providers, Local Nature Partnerships and the Marine Management Organisation¹. The NPPF highlights that ‘effective and on-going joint working between strategic policy-making authorities and relevant bodies is integral to the production of a positively prepared and justified strategy’, and is essential in determining additional infrastructure needs and in addressing unmet development needs².
- 1.2.3 To demonstrate effective and on-going joint working, the NPPF recommends that authorities ‘prepare and maintain one or more statements of common ground, documenting the cross-boundary matters being addressed and progress in cooperating to address these’³.
- 1.2.4 As part of the Duty to Cooperate, local planning authorities should ‘identify the relevant strategic matters which they need to address in their plans’⁴. The Planning and Compulsory Purchase Act 2004 defines strategic matters as ‘sustainable development or use of land that has or would have a significant impact on at least two planning areas, including (in particular) sustainable development or use of land for or in connection with infrastructure that is strategic and has or would have a significant impact on at least two planning areas’.

¹ Paragraph 25, National Planning Policy Framework

² Paragraph 26, National Planning Policy Framework

³ Paragraph 28, National Planning Policy Framework

⁴ Paragraph 25, National Planning Policy Framework

1.3 Prescribed Duty to Cooperate bodies

1.3.1 The Town and Country Planning (Local Planning)(England) Regulations 2012 sets out the following prescribed bodies relevant to Harborough District Council to which the Duty to Cooperate applies:

- The Environment Agency
- Historic England
- Natural England
- The Civil Aviation Authority
- Homes England
- NHS Leicester, Leicestershire and Rutland Integrated Care Board/National Health Service (NHS) England
- Office of Rail and Road
- National Highways
- Leicestershire County Council Highway Authority
- Leicestershire Local Nature Partnership

1.3.2 In addition to the prescribed Duty to Cooperate bodies listed above, the Council has also engaged with the following local planning authorities and county councils:

- Leicester and Leicestershire authorities:
 - Blaby District Council
 - Charnwood Borough Council
 - Hinckley and Bosworth Borough Council
 - Leicester City Council
 - Leicestershire County Council
 - Melton Borough Council
 - North West Leicestershire District Council
 - Oadby and Wigston Borough Council
- Non-Leicestershire authorities:
 - North Northamptonshire Council
 - Rugby Borough Council
 - Rutland County Council
 - Warwickshire County Council
 - West Northamptonshire Council

1.3.3 To support the production of the Local Plan, and to ensure a comprehensive approach to cooperation on strategic and cross boundary matters, engagement undertaken by the Council has gone beyond those prescribed Duty to Cooperate bodies and surrounding authorities listed above, to also include cooperation with a range of other organisations that may have an interest in the production of the Plan. The organisations which the Council has engaged with, and the type of engagement undertaken, are listed within Appendices 1 and 2.

2.0 Duty to Cooperate Activities

Introduction

- 2.1.1 Appendix 1 sets out the Duty to Cooperate related activities which the Council has undertaken, including meetings and consultation with relevant organisations.
- 2.1.2 The following sections provide a summary of the main Duty to Cooperate activities undertaken by the Council and listed within Appendix 1.

Regular Duty to Cooperate meetings with Leicestershire local authorities and County Council,

Members' Advisory Group (MAG)

- 2.1.3 A councillor from each Leicestershire authority meet regularly to discuss joint strategic planning work.

Strategic Planning Group (SPG)

- 2.1.4 Senior representatives responsible for overseeing strategic planning in each Leicestershire authority meet on regularly to discuss strategic planning matters.

Planning Officers' Forum (POF)

- 2.1.5 Chief Officers responsible for planning and transport services across Leicester and Leicestershire meet formally and provide professional advice to the Strategic Planning Group. The Planning Officers' Forum is supported by joint officer level meetings and includes managers responsible for planning and transportation policy in Leicester and Leicestershire.

Regulation 18 Local Plan Issues and Options consultation, 16 January to 27 February 2024

- 2.1.6 As outlined within the Local Plan Consultation Statement, all surrounding local authorities and prescribed Duty to Cooperate bodies were made aware of the Regulation 18 Local Plan Issues and Options consultation and invited to provide a representation.
- 2.1.7 The Issues and Options consultation document includes a section on the Duty to Cooperate and cross-boundary matters. Question 6 of the consultation document asked whether consultees agreed with the strategic matters identified by the Council and whether there were any changes or additions they considered should be made at this stage.

2.1.8 The relevant local authorities and prescribed Duty to Cooperate bodies which provided representations are listed below.

- Hinckley and Bosworth Borough Council
- Historic England
- Environment Agency
- National Highways
- Leicester City Council
- Leicestershire County Council
- Melton Borough Council
- North Northamptonshire Council
- Natural England
- NHS
- Rugby Borough Council
- North West Leicestershire District Council
- West Northamptonshire Council

Meetings with prescribed Duty to Cooperate bodies, April & October 2024

2.1.9 The Council has invited all prescribed Duty to Cooperate bodies to participate in the production of the Local Plan. All prescribed bodies were invited to attend Duty to Cooperate workshops in April and October 2024, and where required ongoing engagement has taken place to support the production of the Plan.

Engagement with infrastructure providers

2.1.10 Meetings between infrastructure providers and Harborough District Council planning officers were held to discuss the draft Harborough Local Plan and emerging Infrastructure Delivery Plan. Meetings were held with National Highways and the NHS.

Duty to Cooperate Workshop, 30 April 2024

2.1.11 A Duty to Cooperate workshop was held on 30 April 2024 virtually using MS Teams with infrastructure providers, surrounding local authorities and other prescribed Duty to Cooperate bodies. The workshop was guided by a PowerPoint which:

- Provided an update on the Harborough Local Plan;
- Summarised Local Plan evidence base production, including the Infrastructure Delivery Plan;
- Summarised outputs from the Duty to Cooperate Scoping Report and presented the DtC approach and timetable of next steps for DtC engagement;
- Sought to identify and confirm strategic and cross boundary matters which should be considered through the production of the Harborough Local Plan.

Harborough Duty to Cooperate Statement of Compliance

- 2.1.12 Invitations to the DtC workshop were circulated to all relevant local authorities, prescribed Duty to Cooperate bodies, and other key stakeholders likely to be involved in the production and progression of the Local Plan.

Duty to Cooperate Workshop, 10 October 2024

- 2.1.13 A Duty to Cooperate workshop was held on 10 October 2024 virtually using MS Teams with infrastructure providers, surrounding local authorities and other prescribed Duty to Cooperate bodies. The workshop was guided by a PowerPoint which:

- Provided an update on the emerging draft Harborough Local Plan, including the emerging spatial strategy and emerging potential site allocations
- Provided an update on Local Plan evidence base production
- Confirmed identified strategic cross boundary matters
- Set out the Council's approach to meeting Duty to Cooperate requirements
- Presented the next steps in the DtC engagement schedule
- Discussed the production of Statement of Common Ground

- 2.1.14 Invitations to the DtC workshop was circulated to all relevant local authorities, prescribed Duty to Cooperate bodies, and other key stakeholders likely to be involved in the production and progression of the Local Plan.

Strategic B8 logistics meetings, 2024

- 2.1.15 There is an identified need for strategic B8 in the Warehousing and Logistics in Leicester and Leicestershire: Managing Growth and Change (April 2021) report. To understand the apportionment of this need across the region, a Leicester and Leicestershire wide strategic B8 study is underway and expected in 2025. Following Regulation 18 consultation representations concerning an underrepresentation of strategic B8, Harborough District Council commissioned Icenl to investigate strategic B8 needs for the District.
- 2.1.16 Meetings and correspondence with North Northamptonshire, Rugby Borough Council, West Northamptonshire, and the Leicester and Leicestershire Authorities were held in September 2024 to discuss the need for strategic B8 and potential allocations within Harborough District Council and the other local authorities, and the approach to producing statements of common ground.
- 2.1.17 Harborough District Council agreed to share emerging draft evidence and Local Plan policies for informal review and comment prior to Regulation 19 publication. In

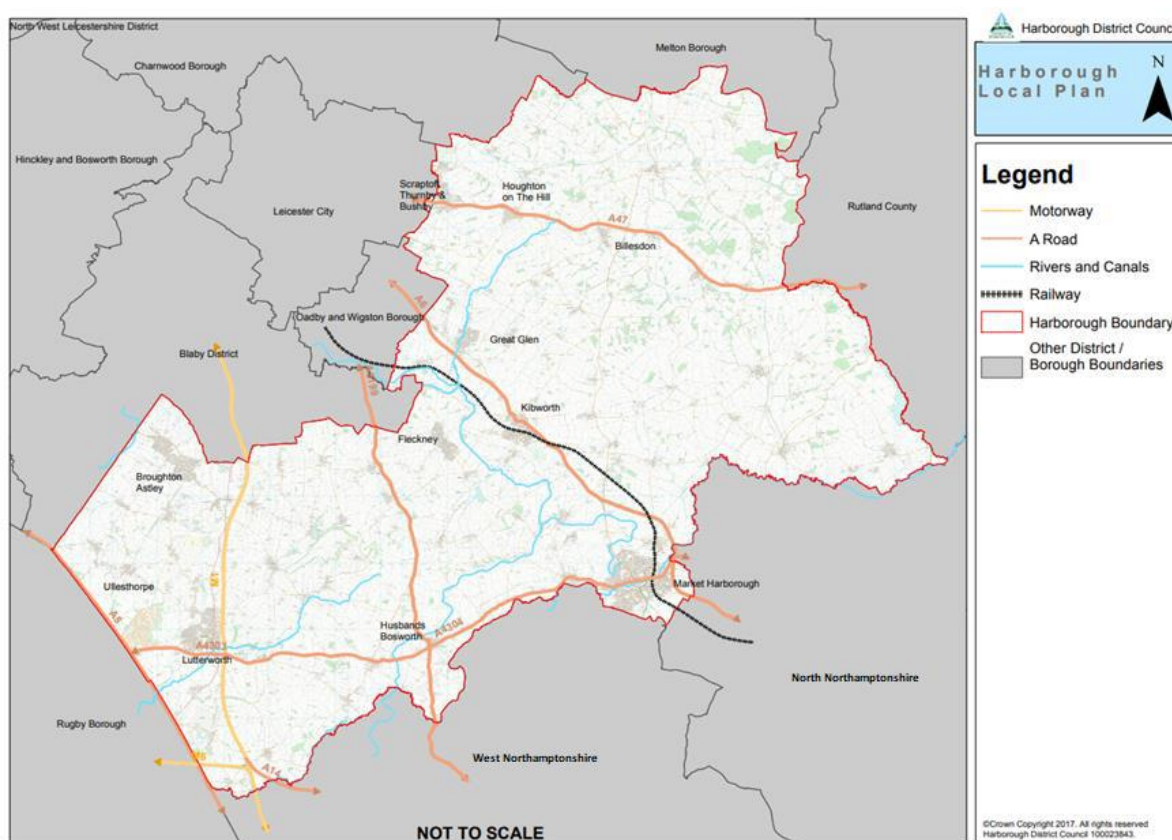
Harborough Duty to Cooperate Statement of Compliance

November 2024, the same authorities received the draft strategic B8 Iceni study commissioned by Harborough District Council for review and comment.

3.0 Duty to Cooperate engagement with surrounding local authorities and prescribed Duty to Cooperate bodies

3.1 Introduction

3.1.1 Harborough Council is located within Leicestershire County Council. To the north of Harborough are the Leicestershire authorities, and to the south, west and east are North Northamptonshire Council, Rugby Borough Council, Rutland County Council, Warwickshire County Council and West Northamptonshire Council.



3.2 Engagement with Leicestershire local authorities

3.2.1 Harborough sits within the Leicester and Leicestershire Housing Market Area (HMA) and Functional Economic Market Area (FEMA), which both cover the whole of Leicester and Leicestershire. These have been defined in recognition of the central economic role of Leicester and the fact that people generally travel to work and move house across local authority boundaries within this area.

Harborough Duty to Cooperate Statement of Compliance

3.2.2 The authorities have a proven history of joint working, as evidenced by the activities summarised in the tables below.

3.2.1 The following sections provide a summary of engagement activities undertaken with Leicestershire local authorities throughout the production of the Harborough Local Plan.

Blaby District Council

Date	Brief Description of the activity	Key outputs
Recurring	Regular MAG, SPG and POF local plan managers group meetings	<ul style="list-style-type: none"> Regular Harborough Local Plan updates provided
Various	Production of joint evidence base documents.	<p>On behalf of all Leicester and Leicestershire authorities:</p> <ul style="list-style-type: none"> Warehousing and Logistics in Leicester and Leicestershire (GL Hearn, April 2021) Housing and Employment Needs Report (Iceni, June 2022) Strategic B8 Distribution and Warehousing Study (Iceni, in production) <p>On behalf of the South Leicestershire authorities (Blaby, Harborough, Oadby and Wigston):</p> <ul style="list-style-type: none"> Joint transport evidence (in production)
Recurring	A5 Member Partnership. Quarterly meeting to discuss strategic matters associated with the A5 for all authorities on the route, including neighbouring Leicestershire and Warwickshire authorities.	Discussion relating to potential mitigation measures and safety issues.
November 2021	South Leicestershire Local Plan Making SoCG	Production of a SoCG prepared in the context of identified key cross boundary issues that are specific to the South Leicestershire (Blaby, Harborough, Oadby and Wigston) authorities, outlining how strategic matters relating to unmet needs, transport, infrastructure, development pressures, and evidence base production, are being considered between the authorities.
June 2022	Production of the Leicester and Leicestershire Authorities SoCG relating to Housing and Employment Needs.	Outlining how strategic matters relating to the DtC, housing and employment needs to 2036, unmet need to 2036, and the apportionment of unmet need to

Harborough Duty to Cooperate Statement of Compliance

		2036, have been addressed within the area.
16/01/24-27/02/24	Harborough Local Plan Regulation 18 consultation	Understanding of emerging Local Plan issues and options.
21/03/24	Meeting of the Leicester and Leicestershire authorities to discuss approaches to self-build housing	Discussions relating to relevant Local Plan policies, monitoring, promotion of the self-build register, applications and appeals relating to self-build housing, and the sharing of information relating to relevant appeal decisions.
30/04/24	Online DtC workshop with all prescribed DtC bodies. <ul style="list-style-type: none"> The Council attended the workshop. All workshop materials were sent to the Council for review and comment. 	All attendees were provided with updates on: <ul style="list-style-type: none"> The Regulation 18 Issues and Options Consultation responses The emerging Local Plan and spatial strategy Proposed DtC engagement activities Approach to the production of a DtC SoCG Identified potential strategic cross-boundary matters Emerging evidence base studies
21/06/24	Leicester and Leicestershire Partnership meeting. Officer level meeting for all Leicester and Leicestershire authorities.	Discussions on the approach being taken by Leicestershire authorities in Local Plans to address strategic matters. Agreement to continue to meet regularly to consider these issues further.
17/09/24	DtC Strategic B8 meeting with Blaby District Council, Charnwood Borough Council, Hinckley and Bosworth Borough Council, Leicestershire County Council, North West Leicestershire District Council, and the Leicester and Leicestershire Partnership	The meeting included discussions regarding: <ul style="list-style-type: none"> The preparation of the Harborough Local Plan Emerging need for strategic B8 and potential allocations Approach to producing statements of common ground Approach to addressing strategic B8 needs for each authority
10/10/24	Online DtC Workshop with all prescribed DtC bodies. <ul style="list-style-type: none"> The Council attended the workshop. All workshop materials were sent to the Council for review and comment. 	All attendees were provided with updates on: <ul style="list-style-type: none"> The emerging Local Plan and spatial strategy DtC engagement activities undertaken to date Identified strategic cross-boundary matters, and how they are being addressed through the production of the Local Plan.

Harborough Duty to Cooperate Statement of Compliance

		<ul style="list-style-type: none"> • Approach to the production of DtC SoCG
11/10/24	Liaised informally to invite comments on emerging draft Regulation 19 Local Plan sections and policies.	Understanding of emerging proposals
01/11/24	Provided with the draft strategic B8 Iceni study commissioned by HDC for review and comment.	Understanding of emerging evidence

Charnwood Borough Council

Date	Brief Description of the activity	Key outputs
Recurring	Regular MAG, SPG and POF local plan managers group meetings	<ul style="list-style-type: none"> • Regular Harborough Local Plan updates provided
Various	Production of joint evidence base documents.	On behalf of all Leicester and Leicestershire authorities: <ul style="list-style-type: none"> • Warehousing and Logistics in Leicester and Leicestershire (GL Hearn, April 2021) • Housing and Employment Needs Report (Iceni, June 2022) • Strategic B8 Distribution and Warehousing Study (Iceni, in production)
June 2022	Production of the Leicester and Leicestershire Authorities SoCG relating to Housing and Employment Needs.	Outlining how strategic matters relating to the DtC, housing and employment needs to 2036, unmet need to 2036, and the apportionment of unmet need to 2036, have been addressed within the area.
16/01/24-27/02/24	Harborough Local Plan Regulation 18 consultation	Understanding of emerging Local Plan issues and options.
21/03/24	Meeting of the Leicester and Leicestershire authorities to discuss approaches to self-build housing	Discussions relating to relevant Local Plan policies, monitoring, promotion of the self-build register, applications and appeals relating to self-build housing, and the sharing of information relating to relevant appeal decisions.
30/04/24	Online DtC workshop with all prescribed DtC bodies. <ul style="list-style-type: none"> • The Council attended the workshop. • All workshop materials were sent to the Council for review and comment. 	All attendees were provided with updates on: <ul style="list-style-type: none"> • The Regulation 18 Issues and Options Consultation responses • The emerging Local Plan and spatial strategy • Proposed DtC engagement activities • Approach to the production of a DtC SoCG

Harborough Duty to Cooperate Statement of Compliance

		<ul style="list-style-type: none"> Identified potential strategic cross-boundary matters Emerging evidence base studies
21/06/24	Leicester and Leicestershire Partnership meeting. Officer level meeting for all Leicester and Leicestershire authorities.	Discussions on the approach being taken by Leicestershire authorities in Local Plans to address strategic matters. Agreement to continue to meet regularly to consider these issues further.
17/09/24	DtC Strategic B8 meeting with Blaby District Council, Charnwood Borough Council, Hinckley and Bosworth Borough Council, Leicestershire County Council, North West Leicestershire District Council, and the Leicester and Leicestershire Partnership	<p>The meeting included discussions regarding:</p> <ul style="list-style-type: none"> The preparation of the Harborough Local Plan Emerging need for strategic B8 and potential allocations Approach to producing statements of common ground Approach to addressing strategic B8 needs for each authority
10/10/24	<p>Online DtC Workshop with all prescribed DtC bodies.</p> <ul style="list-style-type: none"> The Council attended the workshop. <p>All workshop materials were sent to the Council for review and comment.</p>	<p>All attendees were provided with updates on:</p> <ul style="list-style-type: none"> The emerging Local Plan and spatial strategy DtC engagement activities undertaken to date Identified strategic cross-boundary matters, and how they are being addressed through the production of the Local Plan. Approach to the production of DtC SoCG
11/10/24	Liaised informally to invite comments on emerging draft Regulation 19 Local Plan sections and policies.	Comments provided on the draft Local Plan. No new strategic cross boundary matters or concerns raised which need to be addressed through additional Duty to Cooperate related activities.
01/11/24	Provided with the draft strategic B8 Icen study commissioned by HDC for review and comment.	Understanding of emerging evidence

Hinckley and Bosworth Borough Council

Date	Brief Description of the activity	Key outputs
Recurring	Regular MAG, SPG and POF local plan managers group meetings	<ul style="list-style-type: none"> Regular Harborough Local Plan updates provided
Recurring	A5 Member Partnership. Quarterly meeting to discuss strategic matters associated with the A5 for all authorities on the route, including	Discussion relating to potential mitigation measures and safety issues.

Harborough Duty to Cooperate Statement of Compliance

	neighbouring Leicestershire and Warwickshire authorities.	
Various	Production of joint evidence base documents.	On behalf of all Leicester and Leicestershire authorities: <ul style="list-style-type: none"> • Warehousing and Logistics in Leicester and Leicestershire (GL Hearn, April 2021) • Housing and Employment Needs Report (Iceni, June 2022) • Strategic B8 Distribution and Warehousing Study (Iceni, in production)
November 2021	South Leicestershire Local Plan Making SoCG	Production of a SoCG prepared in the context of identified key cross boundary issues that are specific to the South Leicestershire (Blaby, Harborough, Oadby and Wigston) authorities, outlining how strategic matters relating to unmet needs, transport, infrastructure, development pressures, and evidence base production, are being considered between the authorities. H&BBC are a signatory to this SoCG as a neighbouring authority.
June 2022	Production of the Leicester and Leicestershire Authorities SoCG relating to Housing and Employment Needs.	Outlining how strategic matters relating to the DtC, housing and employment needs to 2036, unmet need to 2036, and the apportionment of unmet need to 2036, have been addressed within the area.
16/01/24-27/02/24	Harborough Local Plan Regulation 18 consultation	Response to the consultation relating to the proposed options and related issues
30/04/24	Online DtC workshop with all prescribed DtC bodies. <ul style="list-style-type: none"> • The Council attended the workshop. All workshop materials were sent to the Council for review and comment.	All attendees were provided with updates on: <ul style="list-style-type: none"> • The Regulation 18 Issues and Options Consultation responses • The emerging Local Plan and spatial strategy • Proposed DtC engagement activities • Approach to the production of a DtC SoCG • Identified potential strategic cross-boundary matters • Emerging evidence base studies
21/06/24	Leicester and Leicestershire Partnership meeting. Officer level meeting for all Leicester and Leicestershire authorities.	Discussions on the approach being taken by Leicestershire authorities in Local Plans to address strategic matters. Agreement to continue to

Harborough Duty to Cooperate Statement of Compliance

		meet regularly to consider these issues further.
17/07/24	Potential Aligned Approach to Transport meeting	Discussion on the potential need for a south Leicestershire transport related statement of common ground, production of associated transport related topic papers, and the delivery of strategic infrastructure.
17/09/24	DtC Strategic B8 meeting with Blaby District Council, Charnwood Borough Council, Hinckley and Bosworth Borough Council, Leicestershire County Council, North West Leicestershire District Council, and the Leicester and Leicestershire Partnership	The meeting included discussions regarding: <ul style="list-style-type: none"> • The preparation of the Harborough Local Plan • Emerging need for strategic B8 and potential allocations • Approach to producing statements of common ground • Approach to addressing strategic B8 needs for each authority
10/10/24	Online DtC Workshop with all prescribed DtC bodies. <ul style="list-style-type: none"> • The Council attended the workshop. All workshop materials were sent to the Council for review and comment.	All attendees were provided with updates on: <ul style="list-style-type: none"> • The emerging Local Plan and spatial strategy • DtC engagement activities undertaken to date • Identified strategic cross-boundary matters, and how they are being addressed through the production of the Local Plan. • Approach to the production of DtC SoCG
11/10/24	Liaised informally to invite comments on emerging draft Regulation 19 Local Plan sections and policies.	Comments provided on the draft Local Plan. No new strategic cross boundary matters or concerns raised which need to be addressed through additional Duty to Cooperate related activities.
01/11/24	Provided with the draft strategic B8 Iceni study commissioned by HDC for review and comment.	Understanding of emerging evidence

Leicester City Council

Date	Brief Description of the activity	Key outputs
Recurring	Regular MAG, SPG and POF local plan managers group meetings	<ul style="list-style-type: none"> • Regular Harborough Local Plan updates provided
Various	Production of joint evidence base documents.	On behalf of all Leicester and Leicestershire authorities:

Harborough Duty to Cooperate Statement of Compliance

		<ul style="list-style-type: none"> Warehousing and Logistics in Leicester and Leicestershire (GL Hearn, April 2021) Housing and Employment Needs Report (Iceni, June 2022) Strategic B8 Distribution and Warehousing Study (Iceni, in production)
June 2022	Production of the Leicester and Leicestershire Authorities SoCG relating to Housing and Employment Needs.	Outlining how strategic matters relating to the DtC, housing and employment needs to 2036, unmet need to 2036, and the apportionment of unmet need to 2036, have been addressed within the area.
03/08/23	LCC / HDC DtC meeting	<ul style="list-style-type: none"> Update on Local Plan production from both authorities HDC representation on the Regulation 19 Local Plan
16/01/24-27/02/24	Harborough Local Plan Regulation 18 consultation	Consultation response provided relating to the proposed options and related issues
21/03/24	Meeting of the Leicester and Leicestershire authorities to discuss approaches to self-build housing	Discussions relating to relevant Local Plan policies, monitoring, promotion of the self-build register, applications and appeals relating to self-build housing, and the sharing of information relating to relevant appeal decisions.
30/04/24	<p>Online DtC workshop with all prescribed DtC bodies.</p> <ul style="list-style-type: none"> The Council attended the workshop. All workshop materials were sent to the Council for review and comment. 	<p>All attendees were provided with updates on:</p> <ul style="list-style-type: none"> The Regulation 18 Issues and Options Consultation responses The emerging Local Plan and spatial strategy Proposed DtC engagement activities Approach to the production of a DtC SoCG Identified potential strategic cross-boundary matters Emerging evidence base studies
29/05/24	LCC / HDC DtC meeting	<p>Discussion on the following:</p> <ul style="list-style-type: none"> Update on Leicester Local Plan Harborough District Council Local Plan update
21/06/24	Leicester and Leicestershire Partnership meeting. Officer level meeting for all Leicester and Leicestershire authorities.	Discussions on the approach being taken by Leicestershire authorities in Local Plans to address strategic matters. Agreement to continue to meet regularly to consider these issues further.
08/07/24	LCC / HDC DtC meeting	<ul style="list-style-type: none"> Update on Leicester Local Plan Harborough District Council Local Plan update

Harborough Duty to Cooperate Statement of Compliance

Sept 2024	Production of the Leicester and Leicestershire Authorities SoCG relating to the plan period for the Leicester City Local Plan.	Production of a SoCG relating to Leicester City's Local Plan
17/09/24	Invitation to a DtC Strategic B8 meeting.	The meeting included discussions regarding: <ul style="list-style-type: none"> • The preparation of the Harborough Local Plan • Emerging need for strategic B8 and potential allocations • Approach to producing statements of common ground • Approach to addressing strategic B8 needs for each authority
10/10/24	Online DtC Workshop with all prescribed DtC bodies. All workshop materials were sent to the Council for review and comment.	All attendees were provided with updates on: <ul style="list-style-type: none"> • The emerging Local Plan and spatial strategy • DtC engagement activities undertaken to date • Identified strategic cross-boundary matters, and how they are being addressed through the production of the Local Plan. • Approach to the production of DtC SoCG
11/10/24	Liaised informally to invite comments on emerging draft Regulation 19 Local Plan sections and policies.	Comments provided
01/11/24	Provided with the draft strategic B8 Icení study commissioned by HDC for review and comment.	Understanding of emerging evidence
27/11/24	LCC / HDC DtC meeting	Agreement to continue to collaborate on cross boundary matters
18/12/24	Meeting with LCC, Oadby and Wigston Borough Council, and consultants TEP to discuss the draft Green Wedges Assessment being produced on behalf of HDC.	<ul style="list-style-type: none"> • Update on the HDC Green Wedges Review undertaken by TEP. • Update on similar work being undertaken by other authorities. • Agreed that the draft Green Wedges Assessment report will be circulated for review following the meeting.

Leicestershire County Council

Date	Brief Description of the activity	Key outputs
Recurring	Regular MAG, SPG and POF local plan managers group meetings	<ul style="list-style-type: none"> • Regular Harborough Local Plan updates provided
Recurring	A5 Member Partnership. Quarterly meeting to	Discussion relating to potential mitigation measures and safety issues.

Harborough Duty to Cooperate Statement of Compliance

	discuss strategic matters associated with the A5 for all authorities on the route, including neighbouring Leicestershire and Warwickshire authorities.	
Various	Participation in the production of joint evidence base documents.	On behalf of all Leicester and Leicestershire authorities: <ul style="list-style-type: none"> • Warehousing and Logistics in Leicester and Leicestershire (GL Hearn, April 2021) • Housing and Employment Needs Report (Iceni, June 2022) • Strategic B8 Distribution and Warehousing Study (Iceni, in production)
Various	LCC / HDC meetings - Education	Discussions regarding education evidence to inform the Local Plan. This included a joint understanding of existing and forecast school capacity, the potential for on-site extension of schools and the need for new school provision. This cooperation informed the development strategy and site selection, particularly in relation to the level of growth in individual settlements. Joint understanding of the need for additional school place provision and the need for new schools informed the Infrastructure Delivery Plan, Local Plan policies on necessary infrastructure and relevant site allocation policies.
Various	LCC / HDC meetings - Transport	Discussions regarding transport evidence to inform the Local Plan. Joint understanding of capacity constraints on the network and the transport impacts of Local Plan growth. Joint understanding of the need for appropriate evidence including the Joint Transport Evidence. This evidence informed the development strategy and increased understanding of the potential package of measures required, which has informed the Infrastructure Delivery Plan, site selection and relevant policies within the Local Plan.
June 2022	Production of the Leicester and Leicestershire Authorities SoCG relating to Housing and Employment Needs.	<ul style="list-style-type: none"> • Outlining how strategic matters relating to the DtC, housing and employment needs to 2036, unmet need to 2036, and the apportionment of unmet need to 2036, have been addressed within the area.

Harborough Duty to Cooperate Statement of Compliance

16/01/24- 27/02/24	Harborough Local Plan Regulation 18 consultation	Consultation response provided relating to the proposed options and related issues
30/04/24	Online DtC workshop with all prescribed DtC bodies. <ul style="list-style-type: none"> The Council attended the workshop. All workshop materials were sent to the Council for review and comment. 	All attendees were provided with updates on: <ul style="list-style-type: none"> The Regulation 18 Issues and Options Consultation responses The emerging Local Plan and spatial strategy Proposed DtC engagement activities Approach to the production of a DtC SoCG Identified potential strategic cross-boundary matters Emerging evidence base studies
21/06/24	Leicester and Leicestershire Partnership meeting. Officer level meeting for all Leicester and Leicestershire authorities.	Discussions on the approach being taken by Leicestershire authorities in Local Plans to address strategic matters. Agreement to continue to meet regularly to consider these issues further.
17/09/24	DtC Strategic B8 meeting with Blaby District Council, Charnwood Borough Council, Hinckley and Bosworth Borough Council, Leicestershire County Council, North West Leicestershire District Council, and the Leicester and Leicestershire Partnership	The meeting included discussions regarding: <ul style="list-style-type: none"> The preparation of the Harborough Local Plan Emerging need for strategic B8 and potential allocations Approach to producing statements of common ground Approach to addressing strategic B8 needs for each authority
10/10/24	Online DtC Workshop with all prescribed DtC bodies. <ul style="list-style-type: none"> The Council attended the workshop. All workshop materials were sent to the Council for review and comment. 	All attendees were provided with updates on: <ul style="list-style-type: none"> The emerging Local Plan and spatial strategy DtC engagement activities undertaken to date Identified strategic cross-boundary matters, and how they are being addressed through the production of the Local Plan. Approach to the production of DtC SoCG
11/10/24	Liaised informally to invite comments on emerging draft Regulation 19 Local Plan sections and policies.	Comments provided on the draft Local Plan. No new strategic cross boundary matters or concerns raised which need to be addressed through additional Duty to Cooperate related activities.
01/11/24	Provided with the draft strategic B8 Iceni study	Understanding of emerging evidence

Harborough Duty to Cooperate Statement of Compliance

	commissioned by HDC for review and comment.	
--	---	--

Melton Borough Council

Date	Brief Description of the activity	Key outputs
Recurring	Regular MAG, SPG and POF local plan managers group meetings	<ul style="list-style-type: none"> Regular Harborough Local Plan updates provided
Various	Production of joint evidence base documents.	<p>On behalf of all Leicester and Leicestershire authorities:</p> <ul style="list-style-type: none"> Warehousing and Logistics in Leicester and Leicestershire (GL Hearn, April 2021) Housing and Employment Needs Report (Iceni, June 2022) Strategic B8 Distribution and Warehousing Study (Iceni, in production)
June 2022	Production of the Leicester and Leicestershire Authorities SoCG relating to Housing and Employment Needs.	Outlining how strategic matters relating to the DtC, housing and employment needs to 2036, unmet need to 2036, and the apportionment of unmet need to 2036, have been addressed within the area.
16/01/24-27/02/24	Harborough Local Plan Regulation 18 consultation	Consultation response provided relating to the proposed options and related issues
21/03/24	Meeting of the Leicester and Leicestershire authorities to discuss approaches to self-build housing	Discussions relating to relevant Local Plan policies, monitoring, promotion of the self-build register, applications and appeals relating to self-build housing, and the sharing of information relating to relevant appeal decisions.
30/04/24	<p>Online DtC workshop with all prescribed DtC bodies.</p> <ul style="list-style-type: none"> The Council attended the workshop. All workshop materials were sent to the Council for review and comment. 	<p>All attendees were provided with updates on:</p> <ul style="list-style-type: none"> The Regulation 18 Issues and Options Consultation responses The emerging Local Plan and spatial strategy Proposed DtC engagement activities Approach to the production of a DtC SoCG Identified potential strategic cross-boundary matters Emerging evidence base studies
21/06/24	Leicester and Leicestershire Partnership meeting. Officer level meeting for all Leicester and Leicestershire authorities.	Discussions on the approach being taken by Leicestershire authorities in Local Plans to address strategic matters. Agreement to continue to meet regularly to consider these issues further.

Harborough Duty to Cooperate Statement of Compliance

17/09/24	Invitation to a DtC Strategic B8 meeting.	The meeting included discussions regarding: <ul style="list-style-type: none"> • The preparation of the Harborough Local Plan • Emerging need for strategic B8 and potential allocations • Approach to producing statements of common ground • Approach to addressing strategic B8 needs for each authority
10/10/24	Online DtC Workshop with all prescribed DtC bodies. <ul style="list-style-type: none"> • The Council attended the workshop. • All workshop materials were sent to the Council for review and comment. 	All attendees were provided with updates on: <ul style="list-style-type: none"> • The emerging Local Plan and spatial strategy • DtC engagement activities undertaken to date • Identified strategic cross-boundary matters, and how they are being addressed through the production of the Local Plan. • Approach to the production of DtC SoCG
11/10/24	Liaised informally to invite comments on emerging draft Regulation 19 Local Plan sections and policies.	Understanding of emerging proposals
01/11/24	Provided with the draft strategic B8 IcenI study commissioned by HDC for review and comment.	Understanding of emerging evidence

North West Leicestershire District Council

Date	Brief Description of the activity	Key outputs
Recurring	Regular MAG, SPG and POF local plan managers group meetings	<ul style="list-style-type: none"> • Regular Harborough Local Plan updates provided
Various	Production of joint evidence base documents.	On behalf of all Leicester and Leicestershire authorities: <ul style="list-style-type: none"> • Warehousing and Logistics in Leicester and Leicestershire (GL Hearn, April 2021) • Housing and Employment Needs Report (IcenI, June 2022) • Strategic B8 Distribution and Warehousing Study (IcenI, in production)
June 2022	Production of the Leicester and Leicestershire Authorities SoCG relating to Housing and Employment Needs.	Outlining how strategic matters relating to the DtC, housing and employment needs to 2036, unmet need to 2036, and the apportionment of unmet need to 2036, have been addressed within the area.

Harborough Duty to Cooperate Statement of Compliance

16/01/24-27/02/24	Harborough Local Plan Regulation 18 consultation	Response to the consultation relating to the proposed options and related issues
21/03/24	Meeting of the Leicester and Leicestershire authorities to discuss approaches to self-build housing	Discussions relating to relevant Local Plan policies, monitoring, promotion of the self-build register, applications and appeals relating to self-build housing, and the sharing of information relating to relevant appeal decisions.
30/04/24	Online DtC workshop with all prescribed DtC bodies. <ul style="list-style-type: none"> The Council attended the workshop. All workshop materials were sent to the Council for review and comment.	All attendees were provided with updates on: <ul style="list-style-type: none"> The Regulation 18 Issues and Options Consultation responses The emerging Local Plan and spatial strategy Proposed DtC engagement activities Approach to the production of a DtC SoCG Identified potential strategic cross-boundary matters Emerging evidence base studies
21/06/24	Leicester and Leicestershire Partnership meeting. Officer level meeting for all Leicester and Leicestershire authorities.	Discussions on the approach being taken by Leicestershire authorities in Local Plans to address strategic matters. Agreement to continue to meet regularly to consider these issues further.
17/07/24	Potential Aligned Approach to Transport meeting	Discussion on the potential need for a south Leicestershire transport related statement of common ground, production of associated transport related topic papers, and the delivery of strategic infrastructure.
17/09/24	DtC Strategic B8 meeting with Blaby District Council, Charnwood Borough Council, Hinckley and Bosworth Borough Council, Leicestershire County Council, North West Leicestershire District Council, and the Leicester and Leicestershire Partnership	The meeting included discussions regarding: <ul style="list-style-type: none"> The preparation of the Harborough Local Plan Emerging need for strategic B8 and potential allocations Approach to producing statements of common ground Approach to addressing strategic B8 needs for each authority
10/10/24	Online DtC Workshop with all prescribed DtC bodies. <ul style="list-style-type: none"> The Council attended the workshop. All workshop materials were sent to the Council for review and comment. 	All attendees were provided with updates on: <ul style="list-style-type: none"> The emerging Local Plan and spatial strategy DtC engagement activities undertaken to date Identified strategic cross-boundary matters, and how they are being addressed through the production of the Local Plan.

Harborough Duty to Cooperate Statement of Compliance

		<ul style="list-style-type: none"> • Approach to the production of DtC SoCG
11/10/24	Liaised informally to invite comments on emerging draft Regulation 19 Local Plan sections and policies.	Understanding of emerging proposals
01/11/24	Provided with the draft strategic B8 Icení study commissioned by HDC for review and comment.	Comments provided

Oadby and Wigston Borough Council

Date	Brief Description of the activity	Key outputs
Recurring	Regular MAG, SPG and POF local plan managers group meetings	<ul style="list-style-type: none"> • Regular Harborough Local Plan updates provided
Recurring usually every 2-3 weeks since August 2024.	Regular HDC / O&WBC DtC meetings	<p>Specific items vary. In summary, the meetings regularly address the following topics:</p> <ul style="list-style-type: none"> • Local Plan production updates • The content of emerging draft HDC Local Plan policies • Updates on the production of evidence base documents, particularly relating to viability, transport, Green Wedges, flood risk assessments and infrastructure evidence • Infrastructure, such as local healthcare and education needs • The production of a memorandum of understanding (MOU) / SoCG between the authorities regarding cross boundary strategic site allocations. • Agreed consistent policy wording relating to the cross-boundary site to be included in each emerging draft Local Plan.
Various	Production of joint evidence base documents.	<p>On behalf of all Leicester and Leicestershire authorities:</p> <ul style="list-style-type: none"> • Warehousing and Logistics in Leicester and Leicestershire (GL Hearn, April 2021) • Housing and Employment Needs Report (Icení, June 2022) • Strategic B8 Distribution and Warehousing Study (Icení, in production) <p>On behalf of the South Leicestershire authorities (Blaby, Harborough, Oadby and Wigston):</p>

Harborough Duty to Cooperate Statement of Compliance

		<ul style="list-style-type: none"> • Joint transport evidence (in production)
November 2021	South Leicestershire Local Plan Making SoCG	<ul style="list-style-type: none"> • Production of a SoCG prepared in the context of identified key cross boundary issues that are specific to the South Leicestershire (Blaby, Harborough, Oadby and Wigston) authorities, outlining how strategic matters relating to unmet needs, transport, infrastructure, development pressures, and evidence base production, are being considered between the authorities.
June 2022	Production of the Leicester and Leicestershire Authorities SoCG relating to Housing and Employment Needs.	Outlining how strategic matters relating to the DtC, housing and employment needs to 2036, unmet need to 2036, and the apportionment of unmet need to 2036, have been addressed within the area.
21/09/23	HDC / O&WBC DtC meeting	<p>Discussions on the following:</p> <ul style="list-style-type: none"> • Local Plan Update • Housing Need • Infrastructure Requirements – need for cross boundary contributions • Joint Evidence Base – approach to commissioning viability evidence • Cross Boundary Issues • • Green Wedges – importance of retaining the green wedges where possible • Cross Boundary HIA
16/01/24-27/02/24	Harborough Local Plan Regulation 18 consultation	Understanding of emerging Local Plan issues and options.
21/03/24	Meeting of the Leicester and Leicestershire authorities to discuss approaches to self-build housing	Discussions relating to relevant Local Plan policies, monitoring, promotion of the self-build register, applications and appeals relating to self-build housing, and the sharing of information relating to relevant appeal decisions.
25/04/24	HDC / O&WBC DtC meeting	<ul style="list-style-type: none"> • Local Plan update and timescales • Strategic priorities • Joint evidence base – agreement to check capacity levels for health centres and surgeries in O&W Borough • Individual evidence base • County wide work
30/04/24	Online DtC workshop with all prescribed DtC bodies.	All attendees were provided with updates on:

Harborough Duty to Cooperate Statement of Compliance

	<ul style="list-style-type: none"> • The Council attended the workshop. • All workshop materials were sent to the Council for review and comment. 	<ul style="list-style-type: none"> • The Regulation 18 Issues and Options Consultation responses • The emerging Local Plan and spatial strategy • Proposed DtC engagement activities • Approach to the production of a DtC SoCG • Identified potential strategic cross-boundary matters • Emerging evidence base studies
20/05/24	HDC / O&WBC DtC meeting	<ul style="list-style-type: none"> • SHELAA site assessment • Detailed site assessment • Infrastructure Delivery Plan • Highways and transport evidence • Other site wide evidence • Agreed that: <ul style="list-style-type: none"> ○ Further discussion required on a site allocation design guide ○ Joint meeting with education required ○ Cross-boundary assessment for the Land South of Gartree Road site required for SFRA and BNG
21/06/24	Leicester and Leicestershire Partnership meeting. Officer level meeting for all Leicester and Leicestershire authorities.	Discussions on the approach being taken by Leicestershire authorities in Local Plans to address strategic matters. Agreement to continue to meet regularly to consider these issues further.
11/07/24	HDC / O&WBC DtC meeting	<ul style="list-style-type: none"> • Secretariat arrangements • Draft Memorandum of Understanding - agreement to comment on draft • Emerging joint evidence - agreement to share cross boundary SHELAA outputs and the costs of evidence base studies • Site promoter evidence • Site allocation policy • Agreement to meeting with the County Council on education matters
17/07/24	Potential Aligned Approach to Transport meeting	Discussion on the potential need for a south Leicestershire transport related statement of common ground, production of associated transport related topic papers, and the delivery of strategic infrastructure.
17/09/24	Invitation to a DtC Strategic B8 meeting.	The meeting included discussions regarding:

		<ul style="list-style-type: none"> • The preparation of the Harborough Local Plan • Emerging need for strategic B8 and potential allocations • Approach to producing statements of common ground • Approach to addressing strategic B8 needs for each authority
10/10/24	<p>Online DtC Workshop with all prescribed DtC bodies.</p> <ul style="list-style-type: none"> • The Council attended the workshop. • All workshop materials were sent to the Council for review and comment. 	<p>All attendees were provided with updates on:</p> <ul style="list-style-type: none"> • The emerging Local Plan and spatial strategy • DtC engagement activities undertaken to date • Identified strategic cross-boundary matters, and how they are being addressed through the production of the Local Plan. • Approach to the production of DtC SoCG
11/10/24	<p>Liaised informally to invite comments on emerging draft Regulation 19 Local Plan sections and policies.</p>	<p>Understanding of emerging proposals</p>
01/11/24	<p>Provided with the draft strategic B8 Icen study commissioned by HDC for review and comment.</p>	<p>Understanding of emerging evidence</p>
18/12/24	<p>Meeting with LCC, Oadby and Wigston Borough Council, and consultants TEP to discuss the draft Green Wedges Assessment being produced on behalf of HDC.</p>	<ul style="list-style-type: none"> • Update on the HDC Green Wedges Review undertaken by TEP. • Update on similar work being undertaken by other authorities. • Agreed that the draft Green Wedges Assessment report will be circulated for review following the meeting.

3.3 Engagement with non-Leicestershire local authorities

3.3.1 Harborough District Council shares its southern boundary with the Northamptonshire authorities and its eastern border with Rutland County Council. To support the production of the Local Plan, the Council has sought to engage on a regular basis with surrounding non-Leicestershire local authorities.

North Northamptonshire Council

Date	Brief Description of the activity	Key outputs
16/01/24-27/02/24	Harborough Local Plan Regulation 18 consultation	<ul style="list-style-type: none"> • Response to the consultation relating to the proposed options and related issues

Harborough Duty to Cooperate Statement of Compliance

30/04/24	<p>Online DtC workshop with all prescribed DtC bodies.</p> <ul style="list-style-type: none"> The Council attended the workshop. All workshop materials were sent to the Council for review and comment. 	<p>All attendees were provided with updates on:</p> <ul style="list-style-type: none"> The Regulation 18 Issues and Options Consultation responses The emerging Local Plan and spatial strategy Proposed DtC engagement activities Approach to the production of a DtC SoCG Identified potential strategic cross-boundary matters Emerging evidence base studies
30/09/24	DtC Strategic B8 meeting	<p>The meeting included discussions regarding:</p> <ul style="list-style-type: none"> The preparation of the Harborough Local Plan Emerging need for strategic B8 and proposed allocations within Harborough District (including the potential for growth at Magna Park) Approach to producing statements of common ground Approach to addressing strategic B8 needs for North Northants
10/10/24	<p>Online DtC Workshop with all prescribed DtC bodies.</p> <ul style="list-style-type: none"> The Council attended the workshop. All workshop materials were sent to the Council for review and comment. 	<p>All attendees were provided with updates on:</p> <ul style="list-style-type: none"> The emerging Local Plan and spatial strategy DtC engagement activities undertaken to date Identified strategic cross-boundary matters, and how they are being addressed through the production of the Local Plan Approach to the production of DtC SoCG
11/10/24	Liaised informally to invite comments on emerging draft Regulation 19 Local Plan sections and policies.	Understanding of emerging proposals
01/11/24	Provided with the draft strategic B8 Icení study commissioned by HDC for review and comment.	Understanding of emerging evidence

Rugby Borough Council

Date	Brief Description of the activity	Key outputs
Recurring	A5 Member Partnership. Quarterly meeting to discuss strategic matters associated with the A5 for all authorities on the route, including neighbouring	Discussion relating to potential mitigation measures and safety issues.

Harborough Duty to Cooperate Statement of Compliance

	Leicestershire and Warwickshire authorities.	
16/01/24-27/02/24	Harborough Local Plan Regulation 18 consultation	<p>Response to the consultation related to the following:</p> <ul style="list-style-type: none"> • Consider online sales growth which may diminish in future for warehousing and logistics. • An allowance should be made for recycling existing sites of warehousing and logistics. • Concern regarding the expansion of Magna Park given capacity issues on the A5, its existing size, and rural location. • Do not support provision of main town centre uses at Magna Park.
30/04/24	<p>Online DtC workshop with all prescribed DtC bodies.</p> <ul style="list-style-type: none"> • The Council attended the workshop. <p>All workshop materials were sent to the Council for review and comment.</p>	<p>All attendees were provided with updates on:</p> <ul style="list-style-type: none"> • The Regulation 18 Issues and Options Consultation responses • The emerging Local Plan and spatial strategy • Proposed DtC engagement activities • Approach to the production of a DtC SoCG • Identified potential strategic cross-boundary matters • Emerging evidence base studies
24/09/24	DtC Strategic B8 meeting	<p>The meeting included discussions regarding:</p> <ul style="list-style-type: none"> • The preparation of the Harborough Local Plan • Emerging need for strategic B8 and proposed allocations within Harborough District (including the potential for growth at Magna Park) • Approach to producing statements of common ground • Approach to addressing strategic B8 needs for Rugby Borough •
10/10/24	<p>Online DtC Workshop with all prescribed DtC bodies.</p> <ul style="list-style-type: none"> • The Council attended the workshop. • All workshop materials were sent to the Council for review and comment. 	<p>All attendees were provided with updates on:</p> <ul style="list-style-type: none"> • The emerging Local Plan and spatial strategy • DtC engagement activities undertaken to date • Identified strategic cross-boundary matters, and how they are being addressed through the production of the Local Plan.

Harborough Duty to Cooperate Statement of Compliance

		<ul style="list-style-type: none"> • Approach to the production of DtC SoCG
11/10/24	Liaised informally to invite comments on emerging draft Regulation 19 Local Plan sections and policies.	Understanding of emerging proposals
01/11/24	Provided with the draft strategic B8 Icen study commissioned by HDC for review and comment.	Understanding of emerging evidence

Rutland County Council

Date	Brief Description of the activity	Key outputs
16/01/24-27/02/24	Harborough Local Plan Regulation 18 consultation	Understanding of emerging Local Plan issues and options.
30/04/24	Online DtC workshop with all prescribed DtC bodies. <ul style="list-style-type: none"> • All workshop materials were sent to RCC for review and comments. 	All attendees were provided with updates on: <ul style="list-style-type: none"> • The Regulation 18 Issues and Options Consultation responses • The emerging Local Plan and spatial strategy • Proposed DtC engagement activities • Approach to the production of a DtC SoCG • Identified potential strategic cross-boundary matters • Emerging evidence base studies
10/10/24	Online DtC Workshop with all prescribed DtC bodies. <ul style="list-style-type: none"> • All workshop materials were sent to the RCC for review and comments. 	All attendees were provided with updates on: <ul style="list-style-type: none"> • The emerging Local Plan and spatial strategy • DtC engagement activities undertaken to date • Identified strategic cross-boundary matters, and how they are being addressed through the production of the Local Plan. • Approach to the production of DtC SoCG
11/10/24	Liaised informally to invite comments on emerging draft Regulation 19 Local Plan sections and policies.	Understanding of emerging proposals

Warwickshire County Council

Date	Brief Description of the activity	Key outputs
Recurring	A5 Member Partnership. Quarterly meeting to discuss strategic matters associated with the A5 for all authorities on the route, including neighbouring	Discussion relating to potential mitigation measures and safety issues.

Harborough Duty to Cooperate Statement of Compliance

	Leicestershire and Warwickshire authorities.	
16/01/24-27/02/24	Harborough Local Plan Regulation 18 consultation	Understanding of emerging Local Plan issues and options.
30/04/24	Online DtC workshop with all prescribed DtC bodies. <ul style="list-style-type: none"> All workshop materials were sent to WCC for review and comment. 	All attendees were provided with updates on: <ul style="list-style-type: none"> The Regulation 18 Issues and Options Consultation responses The emerging Local Plan and spatial strategy Proposed DtC engagement activities Approach to the production of a DtC SoCG Identified potential strategic cross-boundary matters Emerging evidence base studies
10/10/24	Online DtC Workshop with all prescribed DtC bodies. <ul style="list-style-type: none"> All workshop materials were sent to WCC for review and comment. 	All attendees were provided with updates on: <ul style="list-style-type: none"> The emerging Local Plan and spatial strategy DtC engagement activities undertaken to date Identified strategic cross-boundary matters, and how they are being addressed through the production of the Local Plan. Approach to the production of DtC SoCG
11/10/24	Liaised informally to invite comments on emerging draft Regulation 19 Local Plan sections and policies.	Understanding of emerging proposals

West Northamptonshire Council

Date	Brief Description of the activity	Key outputs
16/01/24-27/02/24	Harborough Local Plan Regulation 18 consultation	<ul style="list-style-type: none"> Response to the consultation relating to the proposed options and related issues
30/04/24	Online DtC workshop with all prescribed DtC bodies. <ul style="list-style-type: none"> The Council attended the workshop. All workshop materials were sent to the Council for review and comment. 	All attendees were provided with updates on: <ul style="list-style-type: none"> The Regulation 18 Issues and Options Consultation responses The emerging Local Plan and spatial strategy Proposed DtC engagement activities Approach to the production of a DtC SoCG Identified potential strategic cross-boundary matters Emerging evidence base studies

23/09/24	DtC Strategic B8 meeting	The meeting included discussions regarding: <ul style="list-style-type: none"> • The preparation of the Harborough Local Plan • Emerging need for strategic B8 and proposed allocations within Harborough District (including the potential for growth at Magna Park) • Approach to producing statements of common ground • Approach to addressing strategic B8 needs for West Northants
10/10/24	Online DtC Workshop with all prescribed DtC bodies. <ul style="list-style-type: none"> • The Council attended the workshop. • All workshop materials were sent to the Council for review and comment. 	All attendees were provided with updates on: <ul style="list-style-type: none"> • The emerging Local Plan and spatial strategy • DtC engagement activities undertaken to date • Identified strategic cross-boundary matters, and how they are being addressed through the production of the Local Plan. • Approach to the production of DtC SoCG
11/10/24	Liaised informally to invite comments on emerging draft Regulation 19 Local Plan sections and policies.	Understanding of emerging proposals
01/11/24	Provided with the draft strategic B8 Icen study commissioned by HDC for review and comment.	Comments provided

3.4 Engagement with prescribed Duty to Cooperate bodies

3.4.1 The following section provides a summary of engagement activities undertaken with prescribed Duty to Cooperate bodies.

Environment Agency

Date	Brief Description of the activity	Key outputs
16/01/24-27/02/24	Harborough Local Plan Regulation 18 consultation	<ul style="list-style-type: none"> • Response to the consultation relating to the proposed options and related issues , and agreeing with identified strategic cross boundary matters.
30/04/24	Online DtC workshop with all prescribed DtC bodies. <ul style="list-style-type: none"> • The EA attended the workshop. • All workshop materials were sent to the EA for review and comment. 	All attendees were provided with updates on: <ul style="list-style-type: none"> • The Regulation 18 Issues and Options Consultation responses • The emerging Local Plan and spatial strategy • Proposed DtC engagement activities

Harborough Duty to Cooperate Statement of Compliance

		<ul style="list-style-type: none"> • Approach to the production of a DtC SoCG • Identified potential strategic cross-boundary matters • Emerging evidence base studies
10/10/24	<p>Online DtC Workshop with all prescribed DtC bodies.</p> <ul style="list-style-type: none"> • The EA attended the workshop. • All workshop materials were sent to the EA for review and comment. 	<p>All attendees were provided with updates on:</p> <ul style="list-style-type: none"> • The emerging Local Plan and spatial strategy • DtC engagement activities undertaken to date • Identified strategic cross-boundary matters, and how they are being addressed through the production of the Local Plan. • Approach to the production of DtC SoCG <p>The EA requested at the workshop that they should be included as part of any considerations regarding the impacts of site allocations within the emerging Local Plan.</p>
11/10/24	<p>Liaised informally to invite comments on emerging draft Regulation 19 Local Plan sections and policies.</p>	<p>Comments provided on the draft Local Plan. No new strategic cross boundary matters or concerns raised which need to be addressed through additional Duty to Cooperate related activities.</p>

Historic England

Date	Brief Description of the activity	Key outputs
16/01/24-27/02/24	<p>Harborough Local Plan Regulation 18 consultation</p>	<p>Response to the consultation noted that Historic England agreed with identified strategic cross boundary matters</p>
30/04/24	<p>Online DtC workshop with all prescribed DtC bodies.</p> <ul style="list-style-type: none"> • All workshop materials were sent to Historic England for review and comment. 	<p>All attendees were provided with updates on:</p> <ul style="list-style-type: none"> • The Regulation 18 Issues and Options Consultation responses • The emerging Local Plan and spatial strategy • Proposed DtC engagement activities • Approach to the production of a DtC SoCG • Identified potential strategic cross-boundary matters • Emerging evidence base studies
10/10/24	<p>Online DtC Workshop with all prescribed DtC bodies.</p> <ul style="list-style-type: none"> • All workshop materials were sent to Historic England for review and comment. 	<p>All attendees were provided with updates on:</p> <ul style="list-style-type: none"> • The emerging Local Plan and spatial strategy

Harborough Duty to Cooperate Statement of Compliance

		<ul style="list-style-type: none"> • DtC engagement activities undertaken to date • Identified strategic cross-boundary matters, and how they are being addressed through the production of the Local Plan. • Approach to the production of DtC SoCG
11/10/24	Liaised informally to invite comments on emerging draft Regulation 19 Local Plan sections and policies.	Response provided advice on the potential impacts of proposed site allocations on heritage assets, and recommendations of where a Heritage Impact Assessment may be required.

Natural England

Date	Brief Description of the activity	Key outputs
16/01/24-27/02/24	Harborough Local Plan Regulation 18 consultation	Response to the consultation relating to the proposed options and related issues
30/04/24	<p>Online DtC workshop with all prescribed DtC bodies.</p> <ul style="list-style-type: none"> • Natural England attended the workshop. • All workshop materials were sent to Natural England for review and comments. 	<p>All attendees were provided with updates on:</p> <ul style="list-style-type: none"> • The Regulation 18 Issues and Options Consultation responses • The emerging Local Plan and spatial strategy • Proposed DtC engagement activities • Approach to the production of a DtC SoCG • Identified potential strategic cross-boundary matters • Emerging evidence base studies
10/10/24	<p>Online DtC Workshop with all prescribed DtC bodies.</p> <ul style="list-style-type: none"> • Natural England attended the workshop. • All workshop materials were sent to Natural England for review and comments. 	<p>All attendees were provided with updates on:</p> <ul style="list-style-type: none"> • The emerging Local Plan and spatial strategy • DtC engagement activities undertaken to date • Identified strategic cross-boundary matters, and how they are being addressed through the production of the Local Plan. • Approach to the production of DtC SoCG
11/10/24	Liaised informally to invite comments on emerging draft Regulation 19 Local Plan sections and policies.	Comments provided on the draft Local Plan. No new strategic cross boundary matters or concerns raised which need to be addressed through additional Duty to Cooperate related activities.

Harborough Duty to Cooperate Statement of Compliance

Civil Aviation Authority

Date	Brief Description of the activity	Key outputs
16/01/24-27/02/24	Harborough Local Plan Regulation 18 consultation	Understanding of emerging Local Plan issues and options.
30/04/24	Online DtC workshop with all prescribed DtC bodies. <ul style="list-style-type: none"> All workshop materials were sent to the CAA for review and comments. 	All attendees were provided with updates on: <ul style="list-style-type: none"> The Regulation 18 Issues and Options Consultation responses The emerging Local Plan and spatial strategy Proposed DtC engagement activities Approach to the production of a DtC SoCG Identified potential strategic cross-boundary matters Emerging evidence base studies
10/10/24	Online DtC Workshop with all prescribed DtC bodies. <ul style="list-style-type: none"> All workshop materials were sent to the CAA for review and comments. 	All attendees were provided with updates on: <ul style="list-style-type: none"> The emerging Local Plan and spatial strategy DtC engagement activities undertaken to date Identified strategic cross-boundary matters, and how they are being addressed through the production of the Local Plan. Approach to the production of DtC SoCG
11/10/24	Liaised informally to invite comments on emerging draft Regulation 19 Local Plan sections and policies.	Understanding of emerging proposals

Homes England

Date	Brief Description of the activity	Key outputs
Monthly	Strategic Planning Group meetings. Homes England is an attendee of these meetings.	Monthly meetings to discuss strategic planning in each constituent authority.
16/01/24-27/02/24	Harborough Local Plan Regulation 18 consultation	Understanding of emerging Local Plan issues and options.
30/04/24	Online DtC workshop with all prescribed DtC bodies. <ul style="list-style-type: none"> All workshop materials were sent to Homes England for review and comments. 	All attendees were provided with updates on: <ul style="list-style-type: none"> The Regulation 18 Issues and Options Consultation responses The emerging Local Plan and spatial strategy Proposed DtC engagement activities Approach to the production of a DtC SoCG Identified potential strategic cross-boundary matters

Harborough Duty to Cooperate Statement of Compliance

		<ul style="list-style-type: none"> Emerging evidence base studies
10/10/24	<p>Online DtC Workshop with all prescribed DtC bodies.</p> <ul style="list-style-type: none"> All workshop materials were sent to Homes England for review and comments. 	<p>All attendees were provided with updates on:</p> <ul style="list-style-type: none"> The emerging Local Plan and spatial strategy DtC engagement activities undertaken to date Identified strategic cross-boundary matters, and how they are being addressed through the production of the Local Plan. Approach to the production of DtC SoCG
11/10/24	<p>Liaised informally to invite comments on emerging draft Regulation 19 Local Plan sections and policies.</p>	<p>Comments provided on the draft Local Plan. No new strategic cross boundary matters or concerns raised which need to be addressed through additional Duty to Cooperate related activities.</p>

NHS Leicester, Leicestershire and Rutland Integrated Care Board/National Health Service (NHS) England

Date	Brief Description of the activity	Key outputs
16/01/24-27/02/24	Harborough Local Plan Regulation 18 consultation	<ul style="list-style-type: none"> Response to the consultation relating to the proposed options and related issues 1
21/02/24	Regular (quarterly) meeting between HDC and NHS	<p>The following matters were discussed:</p> <ul style="list-style-type: none"> Future meeting arrangements Approach to obtaining S106 contributions Strategies to improve services and facilities NHS comments to the Reg 18 consultation
30/04/24	<p>Online DtC workshop with all prescribed DtC bodies.</p> <ul style="list-style-type: none"> The NHS attended the workshop. All workshop materials were sent to the NHS for review and comments. 	<p>All attendees were provided with updates on:</p> <ul style="list-style-type: none"> The Regulation 18 Issues and Options Consultation responses The emerging Local Plan and spatial strategy Proposed DtC engagement activities Approach to the production of a DtC SoCG Identified potential strategic cross-boundary matters Emerging evidence base studies
04/06/24	Regular (quarterly) meeting between HDC and NHS	<p>The following matters were discussed:</p> <ul style="list-style-type: none"> ICB team update: estates, place led, contracts, I&T HDC update, Local Plan production update S106 funding

Harborough Duty to Cooperate Statement of Compliance

		<ul style="list-style-type: none"> Healthcare related community engagement arrangements
10/10/24	<p>Online DtC Workshop with all prescribed DtC bodies.</p> <ul style="list-style-type: none"> The NHS attended the workshop. All workshop materials were sent to the NHS for review and comments. 	<p>All attendees were provided with updates on:</p> <ul style="list-style-type: none"> The emerging Local Plan and spatial strategy DtC engagement activities undertaken to date Identified strategic cross-boundary matters, and how they are being addressed through the production of the Local Plan. Approach to the production of DtC SoCG
11/10/24	<p>Liaised informally to invite comments on emerging draft Regulation 19 Local Plan sections and policies.</p>	<p>Understanding of emerging proposals</p>

Office of Rail and Road

Date	Brief Description of the activity	Key outputs
16/01/24-27/02/24	<p>Harborough Local Plan Regulation 18 consultation.</p>	<p>Understanding of emerging Local Plan issues and options.</p>
30/04/24	<p>Online DtC workshop with all prescribed DtC bodies.</p> <ul style="list-style-type: none"> All workshop materials were sent to the ORR for review and comments. 	<p>All attendees were provided with updates on:</p> <ul style="list-style-type: none"> The Regulation 18 Issues and Options Consultation responses The emerging Local Plan and spatial strategy Proposed DtC engagement activities Approach to the production of a DtC SoCG Identified potential strategic cross-boundary matters Emerging evidence base studies
10/10/24	<p>Online DtC Workshop with all prescribed DtC bodies.</p> <ul style="list-style-type: none"> All workshop materials were sent to the ORR for review and comments. 	<p>All attendees were provided with updates on:</p> <ul style="list-style-type: none"> The emerging Local Plan and spatial strategy DtC engagement activities undertaken to date Identified strategic cross-boundary matters, and how they are being addressed through the production of the Local Plan. Approach to the production of DtC SoCG
11/10/24	<p>Liaised informally to invite comments on emerging draft Regulation 19 Local Plan sections and policies.</p>	<p>Understanding of emerging proposals</p>

National Highways

Date	Brief Description of the activity	Key outputs
Regular	Highways and transport modelling meetings with Leicestershire County Council Highway Authority, Leicester City Highway Authority, National Highways, and all Leicester and Leicestershire authorities.	Discussions on transport modelling of growth options being considered in the Local Plan.
Various	Workshops held as part of the Joint Transport Evidence	Awareness of potential options for distributing growth and potential sites that informed this work.
16/01/24-27/02/24	Harborough Local Plan Regulation 18 consultation	<ul style="list-style-type: none"> Response to the consultation relating to the proposed options and related issues
30/04/24	Online DtC workshop with all prescribed DtC bodies. <ul style="list-style-type: none"> All workshop materials were sent to national highways for review and comment. 	<p>All attendees were provided with updates on:</p> <ul style="list-style-type: none"> The Regulation 18 Issues and Options Consultation responses The emerging Local Plan and spatial strategy Proposed DtC engagement activities Approach to the production of a DtC SoCG Identified potential strategic cross-boundary matters Emerging evidence base studies
10/10/24	Online DtC Workshop with all prescribed DtC bodies. <ul style="list-style-type: none"> All workshop materials were sent to National Highways for review and comment. 	<p>All attendees were provided with updates on:</p> <ul style="list-style-type: none"> The emerging Local Plan and spatial strategy DtC engagement activities undertaken to date Identified strategic cross-boundary matters, and how they are being addressed through the production of the Local Plan. Approach to the production of DtC SoCG
11/10/24	Liaised informally to invite comments on emerging draft Regulation 19 Local Plan sections and policies.	Comments provided on the draft Local Plan. No new strategic cross boundary matters or concerns raised which need to be addressed through additional Duty to Cooperate related activities.
January 2025	Meeting held with National Highways to outline the potential sites in proximity to the SRN, including at Magna Park	Agreed that a SoCG would be produced.

4.0 Strategic and cross-boundary matters

4.1 Identification of strategic and cross boundary matters

4.1.1 Through the engagement activities listed within section 3 above, strategic cross boundary matters relevant to the production of the Harborough Local Plan have been identified with prescribed Duty to Cooperate bodies.

4.1.2 The following table summarises the strategic cross boundary matters identified with relevant authorities and organisations throughout the production of the Local Plan, and the activities undertaken to ensure that appropriate cooperation has taken place to support the production of the Local Plan.

Harborough Duty to Cooperate Statement of Compliance

Strategic cross boundary matters considered with prescribed Duty to Cooperate bodies

Strategic cross boundary matter	Relevant DtC and other bodies	DtC activities undertaken where the matter was considered	Summary of the cooperation outcomes to date	Conclusions to date and next steps
<p><u>Unmet housing needs</u></p> <ul style="list-style-type: none"> • Providing a growth strategy which appropriately provides for Harborough’s contribution to meeting Leicester’s unmet housing needs (123 dpa of the total 18,700 homes up to 2036), in accordance with the Housing and Economic Needs Assessment and the June 2022 Leicester and Leicestershire Authorities’ Statement of Common Ground relating to Housing and Employment Land Needs. • Consideration of a post-2036 position across the Housing Market Area in relation to Leicester’s unmet needs. Without confirmation of the quantum and appropriate strategic distribution of Leicester City’s unmet needs post-2036, between 2036-2041 the HDC draft Local Plan will allocate growth only to meet the identified needs of Harborough District. 	<ul style="list-style-type: none"> • Leicestershire County Council • Blaby District Council • Charnwood Borough Council • Harborough District Council • Hinckley & Bosworth Borough Council • Leicester City Council • Melton Borough Council • North West Leicestershire District Council • Oadby & Wigston Borough Council • NHS 	<ul style="list-style-type: none"> • Participation in regular Members Advisory Group, Strategic Planning Group, Planning Officers’ Forum, and highways and transport modelling meetings. • Attendance at Leicester and Leicestershire Partnership meetings. • Production of joint evidence base documents relating to housing needs, including the Joint Position Statement on Housing and Employment Land Supply 2011 to 2031 (March 2018 and September 2020). • Agreement of a strategic SoCG with Leicester and Leicester authorities regarding unmet housing needs (June 2022). • Regulation 18 consultation. • Two DtC workshops. • DtC meetings. • Informally sharing the draft Regulation 19 Local Plan for review and comment. 	<ul style="list-style-type: none"> • The Leicester and Leicestershire Statement of Common Ground relating to Housing and Employment Land Needs (June 2022). • Agreement for HDC to test an increase to the Local Plan housing requirement figure by 123 dpa between 2020 and 2036 to accommodate part of Leicester City’s unmet housing need. • Notes of DtC workshops and meetings. • Agreement to share the emerging draft Local Plan policies for informal review and comment prior to Regulation 19 publication. 	<p>The draft HDC Local Plan will confirm the Council’s commitment to continue to work with authorities within the housing market area in order to address any future identified unmet housing needs from Leicester City.</p> <p>The Plan will include monitoring indicators to determine the need to review the Plan where identified post 2036 unmet housing needs may need to be addressed through the Harborough District Local Plan.</p> <p>Next steps:</p> <ul style="list-style-type: none"> • Continued engagement as required on the emerging HDC Local Plan policies. • Regulation 19 publication.

Harborough Duty to Cooperate Statement of Compliance

Strategic cross boundary matter	Relevant DtC and other bodies	DtC activities undertaken where the matter was considered	Summary of the cooperation outcomes to date	Conclusions to date and next steps
<p><u>Planning for growth in the logistics sector (strategic B8 storage)</u></p> <ul style="list-style-type: none"> Particularly within the 'golden triangle' and 'Area of Opportunity 6 (M1 corridor) identified within the Warehousing and Logistics in Leicester and Leicestershire: Managing Growth and Change (April 2021) report. Identified need within Leicestershire for 718,875sqm of rail served and 301,293sqm of non-rail served logistics sites up to 2041. This is to be apportioned across the Leicestershire authorities. 	<ul style="list-style-type: none"> Leicestershire County Council Blaby District Council Charnwood Borough Council Harborough District Council Hinckley & Bosworth Borough Council Leicester City Council (Unitary) Melton Borough Council North West Leicestershire District Council Oadby & Wigston Borough Council Rugby Borough Council North Northants Council West Northants Council 	<ul style="list-style-type: none"> Participation in a Leicester and Leicestershire wide strategic B8 study to investigate needs across the wider area. Regulation 18 consultation. Two DtC workshops. Invited to a DtC officer level meeting specifically to discuss strategic B8 needs. Informally sharing the draft Regulation 19 Local Plan for review and comment. Informally sharing the draft strategic B8 IcenI study commissioned by HDC for review and comment. 	<ul style="list-style-type: none"> Outputs from the Leicester and Leicestershire wide strategic B8 study are expected later in 2025. Reg 18 Local Plan consultation representations raised concerns about an underestimation of strategic B8 needs. HDC therefore commissioned IcenI to investigate this further through the production of additional evidence on strategic B8 needs for the District. Notes of DtC workshops and meetings. Agreement to share emerging draft evidence and Local Plan policies for informal review and comment prior to Regulation 19 publication. 	<p>A HDC Strategic B8 Study produced by IcenI has identified an appropriate amount of strategic B8 use which should be allocated within Harborough District.</p> <p>The draft HDC Local Plan will allocate an amount of land for B8 uses sufficient to accommodate the District-wide needs identified within the IcenI Study and include monitoring indicators to determine the need to review the Plan when further evidence of need is available.</p> <p>Next steps:</p> <ul style="list-style-type: none"> Continued engagement as required on the emerging HDC Local Plan policies and evidence base. Regulation 19 publication. Finalisation of the Leicester and Leicestershire wide strategic B8 study, and engagement on how the conclusions of this research may impact upon

Harborough Duty to Cooperate Statement of Compliance

Strategic cross boundary matter	Relevant DtC and other bodies	DtC activities undertaken where the matter was considered	Summary of the cooperation outcomes to date	Conclusions to date and next steps
				the approach taken within the draft HDC Local Plan.
<p><u>Expansion of Magna Park</u></p> <ul style="list-style-type: none"> Consideration of potential impacts on the strategic road network 	<ul style="list-style-type: none"> Rugby Borough Council West Northants Council Warwickshire County Council Leicestershire County Council National Highways 	<ul style="list-style-type: none"> Regulation 18 consultation. Two DtC workshops. DtC officer level meeting specifically to discuss strategic B8 needs and the expansion of Magna Park as a potential growth option. Informally sharing the draft Regulation 19 Local Plan for review and comment. Informally sharing the draft strategic B8 Iceni study commissioned by HDC for review and comment. 	<ul style="list-style-type: none"> Notes of DtC workshops and meetings. HDC transport evidence has been assessing impacts of growth at Magna Park, and is considering the impacts on the A5, and Dodwells to the Long Shoot area, and Cross in Hand roundabout with input from the relevant transport bodies, including Warwickshire, Leicestershire, and National Highways. Agreement to share emerging draft evidence and Local Plan policies for informal review and comment prior to Regulation 19 publication. 	<p>The HDC Local Plan growth strategy identifies Magna Park as the most appropriate location for strategic B8 growth.</p> <p>Next steps:</p> <ul style="list-style-type: none"> Continued engagement as required on the emerging HDC Local Plan policies and evidence base. Regulation 19 publication. Finalisation of HDC transport evidence early in 2025, and engagement regarding the outputs of this evidence and the impacts upon the approach taken within the draft HDC Local Plan.
<p><u>Green wedges</u></p> <ul style="list-style-type: none"> Leicester/Thurnby/Stoughton/Oadby Green Wedge (GW2) adjoins similar designations in Leicester 	<ul style="list-style-type: none"> Leicester City Council Oadby & Wigston Borough Council 	<ul style="list-style-type: none"> Regulation 18 consultation. Two DtC workshops. Regular meetings with the relevant authorities. 	<ul style="list-style-type: none"> Regulation 18 comments recorded and used to inform the production of the draft Local Plan. 	<p>A HDC Green Wedge Assessment has been undertaken which will form part of the Local Plan evidence base. The</p>

Harborough Duty to Cooperate Statement of Compliance

Strategic cross boundary matter	Relevant DtC and other bodies	DtC activities undertaken where the matter was considered	Summary of the cooperation outcomes to date	Conclusions to date and next steps
<p>City and Oadby and Wigston Borough.</p>		<ul style="list-style-type: none"> • Informally sharing the draft Regulation 19 Local Plan for review and comment. • Sharing the draft Green Wedges Assessment Review with LCC and Oadby and Wigston Borough Council. 	<ul style="list-style-type: none"> • Notes of DtC workshops and meetings. • Production of the Green Wedges Assessment as part of the Local Plan evidence base. All relevant authorities are aware of the evidence base work being undertaken to support the production of the Local Plan. • Agreement to share emerging draft evidence and Local Plan policies for informal review and comment prior to Regulation 19 publication. 	<p>Assessment does not recommend any amendments to the Green Wedges.</p> <p>Next steps:</p> <ul style="list-style-type: none"> • Continued engagement as required on the emerging HDC Local Plan policies and evidence base. • Regulation 19 publication. • Finalisation of relevant Local Plan evidence base work, and engagement regarding the outputs of this evidence and the impacts upon the approach taken within the draft HDC Local Plan.
<p><u>Impacts of site allocations within the emerging Local Plan</u></p> <ul style="list-style-type: none"> • Strategic site allocations are being considered on or close to authority boundaries with Leicester City and Oadby and Wigston Borough, including. <ul style="list-style-type: none"> ○ Land south of Gartree Road, Oadby (residential and employment allocation) 	<ul style="list-style-type: none"> • Leicester City Council • Oadby & Wigston Borough Council • Leicestershire County Council • Historic England • Environment Agency 	<ul style="list-style-type: none"> • Regulation 18 consultation. • Two DtC workshops. • Regular meetings with the relevant authorities. • Informally sharing the draft Regulation 19 Local Plan for review and comment. 	<ul style="list-style-type: none"> • Regulation 18 comments recorded and used to inform the production of the draft Local Plan. • Notes of DtC workshops and meetings. • HDC draft Local Plan transport and infrastructure related evidence is assessing potential impacts of proposed site allocations, 	<p>The draft HDC Local Plan growth strategy includes strategic site allocations on or close to authority boundaries with Leicester City and Oadby and Wigston Borough, including.</p> <ul style="list-style-type: none"> ○ Land south of Gartree Road, Oadby (residential and employment allocation)

Harborough Duty to Cooperate Statement of Compliance

Strategic cross boundary matter	Relevant DtC and other bodies	DtC activities undertaken where the matter was considered	Summary of the cooperation outcomes to date	Conclusions to date and next steps
<ul style="list-style-type: none"> ○ Land between Scraftoft and Bushby, Scraftoft ○ Land east of Beeby Road, Scraftoft 			<p>including sites with potential strategic and cross boundary impacts. All relevant authorities are aware of the evidence base work being undertaken to support the production of the Local Plan.</p> <ul style="list-style-type: none"> ● Agreement to share emerging draft evidence and Local Plan policies for informal review and comment prior to Regulation 19 publication. 	<ul style="list-style-type: none"> ○ Land between Scraftoft and Bushby, Scraftoft ○ Land east of Beeby Road, Scraftoft <p>Next steps:</p> <ul style="list-style-type: none"> ● Continued engagement as required on the emerging HDC Local Plan policies and evidence base. ● Regulation 19 publication. ● Finalisation of relevant Local Plan evidence base work, and engagement regarding the outputs of this evidence and the impacts upon the approach taken within the draft HDC Local Plan.

5.0 Duty to Cooperate Statements of Common Ground

- 5.1.1 The Planning Practice Guidance⁵ (PPG) recommends that authorities should make 'SoCG available on their website by the time they publish their draft plan, in order to provide communities and other stakeholders with a transparent picture of how they have collaborated'. The Council has therefore drafted SoCG with the prescribed Duty to Cooperate bodies presented in the table below.
- 5.1.2 The table below also outlines the identified strategic cross boundary matters which relate to each body, and the current status of the Duty to Cooperate SoCG with each body.
- 5.1.3 Where a Duty to Cooperate SoCG has been agreed, this will be presented within future updates to this Statement.
- 5.1.4 Where considered necessary to support the examination of the Local Plan, the Council will produce updates to the agreed DtC SoCG with relevant stakeholders to ensure that the Statements are up to date and appropriately reflect recent and ongoing cooperation and engagement with relevant organisations.

⁵ PPG, Plan Making, Paragraph: 020 Reference ID: 61-020-20190315

Harborough Duty to Cooperate Statement of Compliance

Production of Duty to Cooperate Statement of Common Ground

Duty to Cooperate body	Strategic cross boundary matters for inclusion in a SoCG					Status of SoCG
	a) Unmet housing needs - addressing Leicester's unmet needs beyond 2036.	e) Planning for growth in the logistics sector (strategic B8 storage)	f) Expansion of Magna Park - concerns raised regarding potential impacts	o) Green wedges	p) Impacts of site allocations within the emerging Local Plan	
Leicestershire County Council	✓	✓	✓		✓	Drafted, not yet shared with relevant body
Leicester City Council	✓	✓		✓	✓	Drafted, not yet shared with relevant body
Blaby District Council	✓	✓				Drafted, not yet shared with relevant body
Charnwood Borough Council	✓	✓				Drafted, not yet shared with relevant body
Hinckley & Bosworth Borough Council	✓	✓				Drafted, not yet shared with relevant body
Melton Borough Council	✓	✓				Drafted, not yet shared with relevant body
North West Leicestershire District Council	✓	✓				Drafted, not yet shared with relevant body
Oadby & Wigston Borough Council	✓	✓		✓	✓	Drafted, not yet shared with relevant body
Warwickshire County Council			✓			Drafted, not yet shared with relevant body
Rugby Borough Council		✓	✓			Drafted, not yet shared with relevant body
Rutland County Council						Drafted, not yet shared with relevant body
North Northants Council		✓				Drafted, not yet shared with relevant body

Harborough Duty to Cooperate Statement of Compliance

West Northants Council		✓	✓			Drafted, not yet shared with relevant body
Environment Agency					✓	Drafted, not yet shared with relevant body
Historic England					✓	Drafted, not yet shared with relevant body
Natural England						Drafted, not yet shared with relevant body
Homes England						Drafted, not yet shared with relevant body
National Highways			✓			Drafted, not yet shared with relevant body
NHS Clinical Commissioning Groups / NHS						Drafted, not yet shared with relevant body
Civil Aviation Authority						Drafted, not yet shared with relevant body
Office of Rail and Road						Drafted, not yet shared with relevant body

5.1 Conclusion

- 5.1.1 This Statement of Compliance provides a comprehensive and transparent account of how the Council has collaborated to date with all relevant organisations throughout the production of the Local Plan. This Statement demonstrates that, through the range of activities undertaken by Harborough Council, the production of the Harborough Local Plan has met the requirements of the Duty to Cooperate.

6.0 Appendices

Appendix 1: Duty to Cooperate Activities Register

Appendix 1 - Harborough Duty to Cooperate Activities Register

Date	Organisation(s)	Attendees	Purpose of the meeting (agenda)	Outcomes of the meeting (key actions or agreements)	Cross boundary issues discussed
Bimonthly	Members' Advisory Group: Blaby District Council Charnwood Borough Council Hinckley and Bosworth Borough Council Leicester City Council Leicestershire County Council Melton Borough Council North West Leicestershire District Council Oadby and Wigston Borough Council Leicester and Leicestershire Enterprise Partnership (LEEP) Harborough District Council Leicestershire County Council Highway Authority Leicester City Highway Authority		Bimonthly meetings to oversee all joint strategic planning work. Attended by a councillor from each authority and an observer from the LLEP		Housing requirements and distribution (including unmet need issues) Economy and employment requirements and distribution including strategic distribution (strategic B8) Affordable Housing, Housing Mix, Homes for Older Persons & Others with Specialist Needs
Monthly	Strategic Planning Group: Blaby District Council Charnwood Borough Council Hinckley and Bosworth Borough Council Leicester City Council Leicestershire County Council Melton Borough Council North West Leicestershire District Council Oadby and Wigston Borough Council Harborough District Council Leicestershire County Council Highway Authority Leicester City Highway Authority Homes England		Monthly meetings to discuss strategic planning in each constituent authority.		Housing requirements and distribution (including unmet need issues) Economy and employment requirements and distribution including strategic distribution (strategic B8) Affordable Housing, Housing Mix, Homes for Older Persons & Others with Specialist Needs
Regular	Planning Officers' Forum: Blaby District Council Charnwood Borough Council Hinckley and Bosworth Borough Council Leicester City Council Leicestershire County Council Melton Borough Council North West Leicestershire District Council Oadby and Wigston Borough Council Harborough District Council		Formal meetings of Chief Officers responsible for planning and transport services in Leicester and Leicestershire which provide advice to the Strategic Planning Group.		Housing requirements and distribution (including unmet need issues) Economy and employment requirements and distribution including strategic distribution (strategic B8) Affordable Housing, Housing Mix, Homes for Older Persons & Others with Specialist Needs

Appendix 1 - Harborough Duty to Cooperate Activities Register

Regular	Leicestershire County Council Highway Authority Leicester City Highway Authority National Highways Harborough District Council Blaby District Council Charnwood Borough Council Hinckley and Bosworth Borough Council Leicester City Council Leicestershire County Council Melton Borough Council North West Leicestershire District Council Oadby and Wigston Borough Council		Regular meetings to discuss transport modelling of high level options.		Highways and transport modelling Cross boundary sites/impact of potential strategic sites.
21 September 2023	Harborough District Council Oadby and Wigston Borough Council	Tess Nelson, Robert Thornhill (Harborough District Council) Lisa Chevallereau, Adrian Thorpe Jamie Carr, Ed Morgan (Oadby & Wigston Borough Council)	<ul style="list-style-type: none"> • Local Plan Update • Housing Need • Infrastructure Requirements • Joint Evidence Base • Cross Boundary Issues • Potential Transport Route • Green Wedges • Cross Boundary HIA 	<p>Action</p> <ul style="list-style-type: none"> • OWBC and HDC to schedule a meeting towards the end of the year to continue the conversations. <p>Agreements</p> <ul style="list-style-type: none"> • cross-boundary contributions and further solidified policies in OWBC's next Local Plan. • Viability and IDP (Local and Strategic) will be appointed soon. <p>Keep in touch to consider joint-commissioning.</p> <ul style="list-style-type: none"> • Green Wedges need retaining to create a green corridor and there needs to be a collaborative approach as both Councils most viable land plots for development are close to, or on, OWBC's boundary. 	<p>Housing requirements and distribution (including unmet need issues)</p> <p>Economy and employment requirements and distribution including strategic distribution (strategic B8)</p> <p>Highways and transport Green wedges</p> <p>Cross boundary sites/impact of potential strategic sites.</p>
11 January 2024	Leicestershire County Council Harborough District Council	Becci Knight, Ian Sharpe (Leicestershire County Council) Rob Thornhill / Jo Ellershaw (Harborough District Council)	<ul style="list-style-type: none"> • LCC SOS Harborough District Narrative • Changes to education • School places/capacity • New Harborough LP • Potential future issues 	<ul style="list-style-type: none"> • SOS to review I&OCD and make a representation • HDC to share refined options with SOS (ASAP) • Queries on Harborough District Narrative (Mar 23) to BK via email • Regular meetings TBA 	Community facilities (health, education, cultural infrastructure)
16 January 2024	Harborough Local Plan Regulation 18 consultation starts and Duty to Cooperate summary document published in evidence base				

Appendix 1 - Harborough Duty to Cooperate Activities Register

21 February 2024	Harborough District Council NHS	John Richardson, David Atkinson, Terry Begley (Harborough District Council) Laura Robinson, Sarah Bradley Wright, Lorna Simpson (NHS)	<ul style="list-style-type: none"> • Meeting arrangements • S106 • Strategies to improve services and facilities 	<ul style="list-style-type: none"> • Next quarterly meeting to be set up by Laura Robinson (NHS Estates Programme Manager). • Further internal consideration on the appropriate composition of council officers to attend the quarterly meetings. • NHS to provide comments on the Issues and Options. • Add meeting notes to duty to cooperate file. 	Community facilities (health, education, cultural infrastructure)
27 February 2024	Harborough Local Plan Regulation 18 consultation ends				
01 March 2024	Duty to Cooperate review undertaken by DAC Planning on behalf of Harborough District Council				
21 March 2024	Blaby District Council Charnwood Borough Council Leicester City Council Melton Borough Council North west Leicestershire Oadby and Wigston Borough Council	David Burton (Blaby District Council) Ian McDonald, Paul Gilding (Charnwood Borough Council) Joseph Todd (Leicester City Council) Mark Felts (Melton Borough Council) Alison Gibson (North west Leicestershire) Peter Heath (Oadby and Wigston Borough Council)	<ul style="list-style-type: none"> • LPA Summary of Custom and Self Build Register • Legislation update • Local Plan Policies • Monitoring • Promotion • Applications/appeals 	<ul style="list-style-type: none"> • Blaby to circulate CSB appeal decisions that have been received, all to circulate any further updates. 	Community Facilities (health, education, cultural infrastructure)
25 April 2024	Oadby & Wigston Borough Council Harborough District Council	Ed Morgan, Adrian Thorpe, Peter Heath and Lisa Chevallereau (Oadby & Wigston Borough Council) Tess Nelson (Harborough District Council)	<ul style="list-style-type: none"> • Local Plan Update and Timescales • Strategic Priorities • Joint Evidence Base • Individual Evidence Base • County Wide Work 	<ul style="list-style-type: none"> • OWBC to check the capacity levels for health centres and surgeries in the Borough. 	Cross boundary sites/impact of potential strategic sites Community Facilities (health, education, cultural infrastructure) Green wedges Site selection Housing Requirements and Distribution (including unmet need issues) Conservation of natural environment

Appendix 1 - Harborough Duty to Cooperate Activities Register

<p>30 April 2024</p>	<p>Harborough District Council West Northants Council Hinkley and Bosworth Natural England Rugby Borough Council Leicestershire County Council Environment Agency North West Leicestershire Council Oadby and Wigston Council Melton Borough Council Leicester City Council NHS ICB North Northants Council Charnwood Borough Council National Highways Blaby District Council DAC Planning</p>	<p>Lesley Aspinall, Terry Begley, Tess Nelson (Harborough District Council) Amanda Jacobs, Kelly Kingston (West Northants Council) Wendy Hague (Hinkley and Bosworth) Roslyn Deeming (Natural England) Hayley Smith (Rugby Borough Council) Jenna Parton, Julie Thomas, Natalie Howden (Leicestershire County Council) Nick Wakefield (Environment Agency) Sarah Lee, Karen Beavin (North West Leicestershire Council) Ed Morgan (Oadby and Wigston Council) Seb Wilkins (Melton Borough Council) Paul Statham (Leicester City Council) Lorna Simpson, Sarah Bradleywright (NHS ICB) Samuel Humphries (North Northants Council) Katie Mills (Charnwood Borough Council)</p>	<p>Duty to Cooperate Workshop</p> <ul style="list-style-type: none"> • Feedback on the Regulation 18 Issues and Options Consultation responses • Update on the emerging Local Plan and spatial strategy • Proposed DtC engagement activities • Approach to the production of DtC SoCG • Discussion on identified strategic cross-boundary issues • Work on the baseline assessment for the IDP and other emerging evidence base studies 	<p>n/a</p>	<p>Housing requirements and distribution (including unmet need issues) Affordable housing, housing mix, homes for older persons and others with specialist needs Gypsies, Travellers and Travelling Showpeople Economy and employment requirements and distribution including strategic distribution (strategic B8) Retail, leisure and other commercial development Highways and transport Water issues (supply, wastewater, water quality, flood risk) Other infrastructure including telecommunications, security, waste management, minerals and energy Community facilities (health, education, cultural infrastructure) Conservation of the natural environment including Biodiversity Net Gain/Local nature Recovery Strategy/landscape/Green and Blue Infrastructure Conservation of the built and</p>
<p>20 May 2024</p>	<p>Harborough District Council Oadby and Wigston Borough Council</p>	<p>Ed Morgan, Jamie Carr Lisa Chevallereau (Oadby & Wigston Borough Council) Tess Nelson, Terry Begley, Jessica Dewar (Harborough District Council)</p>	<ul style="list-style-type: none"> • SHELAA site assessment • Detailed site assessment • Infrastructure Delivery Plan • Highways and transport evidence • Other site wide evidence 	<ul style="list-style-type: none"> • Further discussion required on a site allocation design guide • Joint meeting with Education required • cross-boundary assessment for the Land South of Gartree Road site required for SFRA and BNG 	<p>Community Facilities (health, education, cultural infrastructure) Cross boundary sites/impact of potential strategic sites</p>
<p>29 May 2024</p>	<p>Leicestershire City Council Harborough District Council</p>	<p>David Atkinson (Harborough District Council) Robert Thornhill (Harborough District Council) Fabian D'Costa, Paul Statham, Paul O'Neill (Leicester City Council)</p>	<ul style="list-style-type: none"> • Update on Leicester Local Plan • Harborough District Council Local Plan update • Leicester's post-2036 unmet need • Infrastructure • Scraftoft Golf Course 	<ul style="list-style-type: none"> • Consider production of SoCG between LCC and HDC on education and transport • LCC to hold a DtC meeting with Leicestershire authorities to discuss approach to post-2036 unmet housing need 	<p>Housing requirements and distribution (including unmet need issues) Community Facilities (health, education, cultural infrastructure) Highways and Transport</p>

Appendix 1 - Harbrough Duty to Cooperate Activities Register

04 June 2024	NHS Harbrough District Council	Louise Robinson, Rebecca Robinson, Sarah Bradleywright, J Munson (NHS) Terry Begley, David Atkinson, Krupa Sudera (Harbrough District Council)	<ul style="list-style-type: none"> • ICB team update: estates, place led, contracts, I&T • Local authority update, local plan update • S106 funding 	<ul style="list-style-type: none"> • HDC to pass on healthcare related community engagement 	Community Facilities (health, education, cultural infrastructure)
04 June 2024	North West Leicestershire Council Harbrough District Council Iceni	Ian Nelson, Sarah Lee (North West Leicestershire Council) Rob Thornhill, Joanna Ellershaw (Harbrough District Council) Nick Ireland (Iceni)	Meeting to discuss approach to meeting strategic warehousing need	<ul style="list-style-type: none"> • Updated range / quantum recommendation for HDC • Interim Position Note / Advice to share with NWLDC • Issue to be flagged with L&L Strategic Planning Partnership 	Economy and employment requirements and distribution including strategic distribution (strategic B8)
06 June 2024	Leicestershire County Council Harbrough District Council	Becki Knight, Rebecca Henson, Ian Sharpe (Leicestershire County Council) David Atkinson, Terry Begley, Tess Nelson (Harbrough District Council)	<ul style="list-style-type: none"> • Secondary school provision and capacity • Cross boundary sites and highways 	<ul style="list-style-type: none"> • Conversations with Urban and Civic need to be comprehensive and coordinated • Further consideration of options to create additional school capacity 	Cross boundary sites/impact of potential strategic sites Community Facilities (health, education, cultural infrastructure) Highways and Transport
21 June 2024	Leicester & Leicestershire Partnership	Grant Butterworth (Leicester City Council) Julie Thomas, Sharon Wiggins, Rebecca Henson (Leicestershire County Council) Richard Bennett (Charnwood Borough Council) Jonathan Hodge (Blaby District Council) David Atkinson, Jessica Dewar (Harbrough District Council) Chris Brown (Hinckley and Bosworth Borough Council) Jorge Fiz Alonso, Sarah Legge (Melton Borough Council) Chris Elston, Karen Beavin (North West Leicestershire District Council) Adrian Thorpe (Oadby and Wigston Borough Council)	<ul style="list-style-type: none"> • Identifying approach taken by Leicestershire authorities in Local Plans to unmet need 	<ul style="list-style-type: none"> • Confirmed position of participating authorities • Arrange further DtC meetings 	Housing requirements and distribution (including unmet need issues)

Appendix 1 - Harborough Duty to Cooperate Activities Register

<p>11 July 2024</p>	<p>Harborough District Council Oadby and Wigston Borough Council</p>	<p>Lisa Chevallereau, Ed Morgan (Oadby & Wigston Borough Council) Jessica Dewar, Tess Nelson, Robert Thornhill, Terry Begley (Harborough District Council) Sara Dilmamode (PlanIn - Harborough District Council) Charlotte Steele (DAC Planning - Harborough District Council)</p>	<ul style="list-style-type: none"> • Secretariat arrangements • Draft Memorandum of Understanding • Emerging Joint Evidence • Site promoter evidence • Site Allocation Policy 	<ul style="list-style-type: none"> • O&WBC to share comments on MOU • HDC and O&WBC to share SHELAA site assessments of cross boundary site • HDC and O&WBC to share updates and cost breakdowns on joint evidence base studies • O&WBC and HDC to meet with LCC on education 	<p>Cross boundary sites/impact of potential strategic sites Community Facilities (health, education, cultural infrastructure)</p>
<p>12 July 2024</p>	<p>Rugby Borough Council Hinckley & Bosworth Borough Council Warwickshire County Council Harborough District Council North Warwickshire Borough Council Cannock Chase District Council Midlands Connect Staffordshire County Council Nuneaton & Bedworth Borough Council Warwickshire Police Leicestershire County Council North West Leicestershire District Council National Highways South Leicestershire</p>	<p>MP John Slinger, Cllr Tony Gillias (Rugby Borough Council) Cllr Bill Crooks, Bill Cullen, Sonia Timmington (Hinckley & Bosworth Borough Council) Richard Baxter-Payne, Adrian Hart (Warwickshire County Council) Cllr Rosita Page, David Atkinson (Harborough District Council) Mike Dittman (North Warwickshire Borough Council) Sushil Birdi (Cannock Chase District Council) Sarah Spink (Midlands Connect) Will Spencer (Staffordshire County Council) Cllr Rob Roze, Chris Kingham, Maria Bailey (Nuneaton & Bedworth Borough Council) Sarah Etienne (Warwickshire Police) Cllr Ozzy O'Shea, Ben Simm (Leicestershire County Council) Paul Stone (North West Leicestershire District Council) Ian Doust, Kamaljit Khokhar (National Highways) Denise Beedell (Logistics)</p>	<ul style="list-style-type: none"> • Presentation from Logistics UK • National Highways update/presentation of Net Zero Strategy • Sub-National Transport Body updates • A5 Safety and Enforcement Strategy update • Environmental Matters • Local Plan/Key Housing and Employment Sites • Lobbying, communication and MP engagement 	<ul style="list-style-type: none"> • Updates provided by National Highways and Midlands Connect and relevant authorities. 	<p>Highways and Transport</p>

Appendix 1 - Harbrough Duty to Cooperate Activities Register

<p>17 July 2024</p>	<p>NW Leicestershire District Council Oadby and Wigston Borough Council Hinckley and Bosworth Borough Council Blaby District Council Leicestershire County Council Harbrough District Council</p>	<p>Karen Beavin (NL&L Joint Strategic Planning Manager) Jamie Carr (Oadby and Wigston Borough Council) Richard Thresh (Hinckley and Bosworth Borough Council) Kevin Exley (Blaby District Council) Andrew Avison, Andy Yeomanson (Leicestershire County Council) Rob Thornhill (Harbrough District Council)</p>	<ul style="list-style-type: none"> • South Leicestershire Statement of Common Ground • Transport Topic Papers • Transport policies • Delivering strategic infrastructure 	<ul style="list-style-type: none"> • All to discuss this internally with managers with a view to getting agreement to progress this work: <ul style="list-style-type: none"> o S. Leicestershire SoCG o Transport Topic Papers o transport policies o approach to delivering long-term strategic infrastructure. 	<p>Highways and Transport</p>
<p>08 August 2024</p>	<p>Harbrough District Council Oadby and Wigston Borough Council</p>	<p>Lisa Chevallereau, Jamie Carr, Peter Heath (Oadby & Wigston Borough Council) Jessica Dewar, Tess Nelson (Harbrough District Council) Charlotte Steele (DAC Planning - Harbrough District Council)</p>	<ul style="list-style-type: none"> • Draft Memorandum of Understanding • Site promoter evidence • Emerging Joint Evidence 	<ul style="list-style-type: none"> • HDC to send schedule of IDP meetings to OWBC and check if more IDP contacts are needed. • HDC to share draft site allocation policy with OWBC in coming weeks. • OWBC to share draft site allocation policy template with HDC once drafted. • HDC and OWBC to arrange a meeting with education and to invite Urban & Civic and Homes England. • HDC and OWBC to gain more clarity on masterplan approach, community engagement, phasing and trajectory from developer meeting on 8 August. • PH to share draft SFRA with HDC. • HDC to share Aspinall Verdi's emerging assumptions with OWBC. • HDC and OWBC to discuss with respective consultants the production of one joint VA or two separate VA for the site. • Discuss next steps for potential joint work on the site for the IDP 	<p>Cross boundary sites/impact of potential strategic sites Community Facilities (health, education, cultural infrastructure) Water issues (supply, wastewater, water quality, flood risk)</p>

Appendix 1 - Harbrough Duty to Cooperate Activities Register

<p>12 September 2024</p>	<p>Harbrough District Council Oadby and Wigston Borough Council</p>	<p>Ed Morgan, Jamie Carr, Lisa Chevallereau, Peter Heath, Adrian Thorpe (Oadby & Wigston Borough Council) Jessica Dewar, Tess Nelson, Terry Begley (Harbrough District Council) Asuka Onishi (DAC Planning - Harbrough District Council)</p>	<ul style="list-style-type: none"> • Minutes & Actions from last meeting (08.08.2024) • Draft Memorandum of Understanding (TB) • Site promoter ongoing engagement and evidence • Emerging Joint Evidence 	<ul style="list-style-type: none"> • Update MoU: Reflect July comments, send by Tuesday. • Planning application: Modify existing comments. • Education-related meeting: next week. • Confirm SHELAA assessment method. • Verify site submission process. • Create concise design guide. • SIFRA report: Confirm by Friday. 	<p>Housing requirements and distribution (including unmet need issues) Community Facilities (health, education, cultural infrastructure) Water issues (supply, wastewater, water quality, flood risk) Conservation of the natural environment including Biodiversity Net Gain/Local nature Recovery Strategy/landscape/Green and Blue Infrastructure</p>
<p>17 September 2024</p>	<p>Blaby District Council Charnwood Borough Council Hinckley and Bosworth Borough Council Leicestershire County Council North West Leicestershire District Council Leicester and Leicestershire Partnership Harbrough District Council</p>	<p>Vicky Chapman (Blaby District Council) Katie Mills (Charnwood Borough Council) Wendy Hague (Hinckley and Bosworth Borough Council) Sharon Wiggins (Leicestershire County Council) Sarah Lee (North West Leicestershire District Council) Karen Beavin (Leicester and Leicestershire Partnership) Robert Thornhill, Joanna Ellershaw (Harbrough District Council) Tim Parton (Harbrough District Council / DAC Planning)</p>	<ul style="list-style-type: none"> • Local Plan preparation update • Emerging need for strategic B8 and proposed allocations within Harbrough District • Approach to producing statements of common ground • Approach to addressing strategic B8 needs for other L&L authorities 	<ul style="list-style-type: none"> • The draft HDC Iceni strategic B8 study will be shared for review and comment once completed. • HDC will consider further the approach and content for a SoCG regarding strategic B8 needs. 	<p>Economy and employment requirements and distribution including strategic distribution (strategic B8)</p>
<p>23 September 2024</p>	<p>West Northamptonshire Council Harbrough District Council</p>	<p>Colin Staves, Kelly Kingston (West Northamptonshire Council) Robert Thornhill, Joanna Ellershaw (Harbrough District Council) Tim Parton (Harbrough District Council / DAC Planning)</p>	<ul style="list-style-type: none"> • Local Plan preparation update • Emerging need for strategic B8 and proposed allocations within Harbrough District • Approach to producing statements of common ground • Approach to addressing strategic B8 needs for West Northants 	<ul style="list-style-type: none"> • The draft HDC Iceni strategic B8 study will be shared for review and comment once completed, likely to be in the next 2-3 weeks. • HDC will consider further the approach and content for a SoCG regarding strategic B8 needs. 	<p>Economy and employment requirements and distribution including strategic distribution (strategic B8)</p>

Appendix 1 - Harborough Duty to Cooperate Activities Register

<p>24 September 2024</p>	<p>Rugby Borough Council Harborough District Council</p>	<p>Hayley Smith (Rugby Borough Council) Robert Thornhill, Joanna Ellershaw (Harborough District Council) Tim Parton (Harborough District Council / DAC Planning)</p>	<ul style="list-style-type: none"> • Local Plan preparation update • Emerging need for strategic B8 and proposed allocations within Harborough District • Approach to producing statements of common ground • Approach to addressing strategic B8 needs for Rugby Borough 	<ul style="list-style-type: none"> • The draft HDC Icen strategic B8 study will be shared for review and comment once completed, likely to be in the next 2-3 weeks. • HDC will consider further the approach and content for a SoCG regarding strategic B8 needs. • A further meeting will be arranged following the circulation of the draft Icen report and draft SoCG. 	<p>Economy and employment requirements and distribution including strategic distribution (strategic B8)</p>
<p>26 September 2024</p>	<p>Harborough District Council Oadby and Wigston Borough Council</p>	<p>Ed Morgan (Oadby & Wigston Borough Council) Jessica Dewar (Harborough District Council) Louise Robinson, Sarah Bradley Wright (NHS ICB Leicester) Asuka Onishi (DAC Planning - Harborough District Council)</p>	<ul style="list-style-type: none"> • Local Plan policies • IDP • SFRA 	<ul style="list-style-type: none"> • Emerging draft Harborough Local Plan: agreed to share the emerging draft Local Plan for informal review. • Decided to work on creating housing trajectories for SHELAA sites. • Confirmed the agreement to proceed with a site-wide viability assessment. • Continue discussions with infrastructure providers (education/healthcare) to determine needs based on projected growth. • Decided to consider a joint approach when meeting with infrastructure providers to avoid duplication of efforts across the authorities. 	<p>Housing requirements and distribution (including unmet need issues) Community Facilities (health, education, cultural infrastructure)</p>
<p>30 September 2024</p>	<p>North Northamptonshire Council Harborough District Council</p>	<p>Richard Palmer, Simon James (North Northamptonshire Council) Robert Thornhill, Joanna Ellershaw (Harborough District Council) Tim Parton (Harborough District Council / DAC Planning)</p>	<ul style="list-style-type: none"> • Local Plan preparation update • Emerging need for strategic B8 and proposed allocations within Harborough District • Approach to producing statements of common ground • Approach to addressing strategic B8 needs for North Northants 	<ul style="list-style-type: none"> • The draft HDC Icen strategic B8 study will be shared for review and comment once completed, likely to be in the next 2-3 weeks. • HDC will consider further the approach and content for a SoCG regarding strategic B8 needs. • NNC will share relevant evidence base documents which may be of interest. 	<p>Economy and employment requirements and distribution including strategic distribution (strategic B8)</p>

Appendix 1 - Harborough Duty to Cooperate Activities Register

<p>10 October 2024</p>	<p>Harborough District Council Charnwood Borough Council NHS ICB Melton Borough Council Environment Agency Oadby and Wigston Borough Council West Northamptonshire Council Hinckley and Bosworth Borough Council Rugby Borough Council Anglian Water Leicestershire County Council Leicestershire County Council North Northants Council Natural England Blaby District Council Rutland County Council North West Leicestershire District Council Severn Trent</p>	<p>Tim Parton, Charlotte Steele (DAC Planning, on behalf of HDC) Tess Nelson, Lesley Aspinall, Terry Begley, Stephen Hay, David Atkinson (Harborough District Council) Katie Mills (Charnwood Borough Council) Sarah Bradley Wright (NHS ICB) Jorge Fiz Alonso (Melton Borough Council) Nick Wakefield (Environment Agency) Lisa Chevallereau (Oadby and Wigston Borough Council) Colin Staves (West Northamptonshire Council) Nicola Corbishley, Wendy Hague (Hinckley and Bosworth Borough Council) Hayley Smith (Rugby Borough Council) Darl Sweetland (Anglian Water) Tim Smith (Leicestershire County Council) Sharon Wiggins, Natalie Howden (Leicestershire County Council) Samuel Humphries (North Northants Council)</p>	<p>Duty to Cooperate workshop #2</p> <ul style="list-style-type: none"> • The emerging draft Harborough Local Plan • Spatial Strategy • Site allocations • Emerging evidence base documents • Strategic cross boundary matters • Approach to meeting Duty to Cooperate requirements • Engagement schedule • Statement of Common Ground 	<ul style="list-style-type: none"> • HDC to share draft LP with stakeholders for informal consultation. • HDC to share draft SoCG for comment. 	<p>Housing requirements and distribution (including unmet need issues) Affordable housing, housing mix, homes for older persons and others with specialist needs Gypsies, Travellers and Travelling Showpeople Economy and employment requirements and distribution including strategic distribution (strategic B8) Retail, leisure and other commercial development Highways and transport Water issues (supply, wastewater, water quality, flood risk) Other infrastructure including telecommunications, security, waste management, minerals and energy Community facilities (health, education, cultural infrastructure) Conservation of the natural environment including Biodiversity Net Gain/Local nature Recovery Strategy/landscape/Green and Blue Infrastructure Conservation of the built and</p>
<p>10 October 2024</p>	<p>Harborough District Council Oadby and Wigston Borough Council</p>	<p>Ed Morgan (Oadby & Wigston Borough Council) Jessica Dewar (Harborough District Council) Louise Robinson, Sarah Bradley Wright (NHS ICB Leicester) Asuka Onishi (DAC Planning - Harborough District Council)</p>	<ul style="list-style-type: none"> • Health/ICB • Trajectory & site delivery and infrastructure • Oadby SDA draft policy • Viability update (HDC) • Other Evidence 	<ul style="list-style-type: none"> • Agreed to provide more specific information on healthcare needs and potential costs for new and improved facilities. • HDC and W&OBC to consider including provisions for new medical centres or financial contributions in allocation policies for the new developments. • Keep healthcare provision plans in policy documents while still providing enough detail for viability testing and IDP. • Continue cross-boundary collaboration in planning healthcare provisions. 	<p>Housing requirements and distribution (including unmet need issues) Water issues (supply, wastewater, water quality, flood risk) Community Facilities (health, education, cultural infrastructure)</p>

Appendix 1 - Harborough Duty to Cooperate Activities Register

24 October 2024	Harborough District Council Oadby and Wigston Borough Council	Ed Morgan, Lisa Chevallereau (Oadby & Wigston Borough Council) Jessica Dewar (Harborough District Council) Asuka Onishi (DAC Planning - Harborough District Council)	<ul style="list-style-type: none"> • Market capacity study/evidence • Joint Oadby SDA policy • Healthcare needs • IDP updates 	<ul style="list-style-type: none"> • Data Alignment: Agreement to align IDP data, including space standards and population projections, between authorities. • Further Analysis: A need for additional cross-comparison of standards and policies to accommodate unique regional characteristics. • Policy Drafting: Decision to draft a cohesive cross-boundary policy that reflects shared and individual requirements of each authority. • ID to share examples of market capacity study/evidence. • Further meetings will be used to discuss specific aspects of healthcare provision planning and to ensure ongoing collaboration on this issue. 	Cross boundary sites/impact of potential strategic sites Community Facilities (health, education, cultural infrastructure)
11-Nov-24	Correspondence on Strategic B8 needs with L&L authorities, West Northants, Rugby and North Northants Councils				
21 November 2024	Harborough District Council Oadby and Wigston Borough Council	Ed Morgan, Peter Heath, Lisa Chevallereau (Oadby & Wigston Borough Council) Jessica Dewar (Harborough District Council) Asuka Onishi (DAC Planning - Harborough District Council)	<ul style="list-style-type: none"> • Updated policy with AD/JC for final comment all • Evidence request QOUD coordinate a response • Transport Evidence HDC • MOU/SoCG all • Local Plan timetable and member engagement in Nov/Dec 	<ul style="list-style-type: none"> • Finalise and circulate updated policies for last comments - AD and JC • Confirm transport evidence with consultants and incorporate findings into documents. • Align on MOU and SoCG drafts to ensure collaboration. • Conduct Local Plan presentations focus on site allocations and policy updates. 	Cross boundary sites/impact of potential strategic sites Highways and Transport

Appendix 1 - Harborough Duty to Cooperate Activities Register

<p>27 November 2024</p>	<p>Leicester City Council Harborough District Council</p>	<p>Andrew Smith, Grant Butterworth, Anthea Anderson, Paul Statham (Leicester City Council) David Atkinson, Tess Nelson, Rob Thornhill (Harborough District Council) Tim Parton (DAC Planning - Harborough District Council)</p>	<ul style="list-style-type: none"> • Duty to Cooperate • Unmet need post 2036 • Oadby SDA • Scraftoft North/other Scraftoft sites – cumulative infrastructure requirements eg schools • Transport Issues and mitigation – City and county engagement - Identifying cross boundary impacts • Whole plan and strategic site viability reports/developer contribution approach • Green wedges/Strategic Green Infrastructure/BNG • Possible three way engagement with O&WBC, HDC and Leicester CC 	<ul style="list-style-type: none"> • Additional text will be included in the draft Local Plan by HDC regarding joint working between authorities. • HDC to share relevant updated sections of the draft Plan for review and comment. • Leicester CC to share the transport response to AECOM with HDC. • HDC to engage with the Schools Team at Leicester CC. • HDC to share the Green Wedge Assessment when this is available. 	<p>Cross boundary sites/impact of potential strategic sites Highways and Transport Community Facilities (health, education, cultural infrastructure)</p>
<p>05 December 2024</p>	<p>Harborough District Council Oadby and Wigston Borough Council</p>	<p>Lisa Chevallereau, Peter Heath, Ed Morgan (Oadby & Wigston Borough Council) Jessica Dewar, Chris Colbourn (Harborough District Council) Asuka Onishi (DAC Planning - Harborough District Council)</p>	<ul style="list-style-type: none"> • Transport evidence • Agenda for November/ December member sessions and presentations • Updates on GIS mapping and revised policy maps for comment • Green Wedge reviews and proposed boundary adjustments • MOU and SoCG • Timelines and evidence preparation for Local Plan consultations 	<ul style="list-style-type: none"> • Finalise GW review by January 2025 and circulate drafts for input. • Leicester to share their Green Wedge study to inform Harborough's review. • Establish individual SOCGs and explore the feasibility of joint SOCGs. • Continue refining policies for Local Plan consultation for site-specific GW changes. • Coordinate with developers and stakeholders to resolve viability concerns. 	<p>Highways and Transport Green Wedges</p>
<p>18 December 2024</p>	<p>Harborough District Council Oadby and Wigston Borough Council Leicester City Council</p>	<p>Lisa Chevallereau (Oadby & Wigston Borough Council) Chris Colbourn (Harborough District Council) Paul O'Neill (Leicester City Council) Louise Fitzgerald (TEP)</p>	<ul style="list-style-type: none"> • Update on the HDC Green Wedges Review undertaken by TEP • Update on similar work being undertaken by other authorities 	<ul style="list-style-type: none"> • Agreed that the draft Green Wedges Assessment report will be circulated for review following the meeting. 	<p>Green Wedges</p>
<p>19 December 2024</p>	<p>Harborough District Council Oadby and Wigston Borough Council</p>	<p>Ed Morgan (Oadby & Wigston Borough Council) Jessica Dewar, Chris Colbourn (Harborough District Council) Asuka Onishi (DAC Planning - Harborough District Council)</p>	<ul style="list-style-type: none"> • Updates on the timetable • Review policy changes and education provisions • Consultation process for Reg 19 plan • Check on cross-boundary collaboration 	<ul style="list-style-type: none"> • JD/EM to update the draft Local Plan policy wording and send it to KN. • Reg 19 consultation proposed 10th January. • Decisions on submission by the 12th March deadline. • Agreed to share IDP updates 	<p>Strategic site allocations Education infrastructure</p>