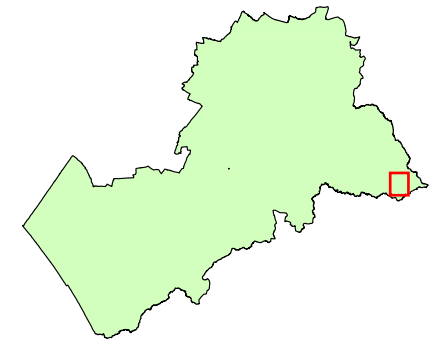
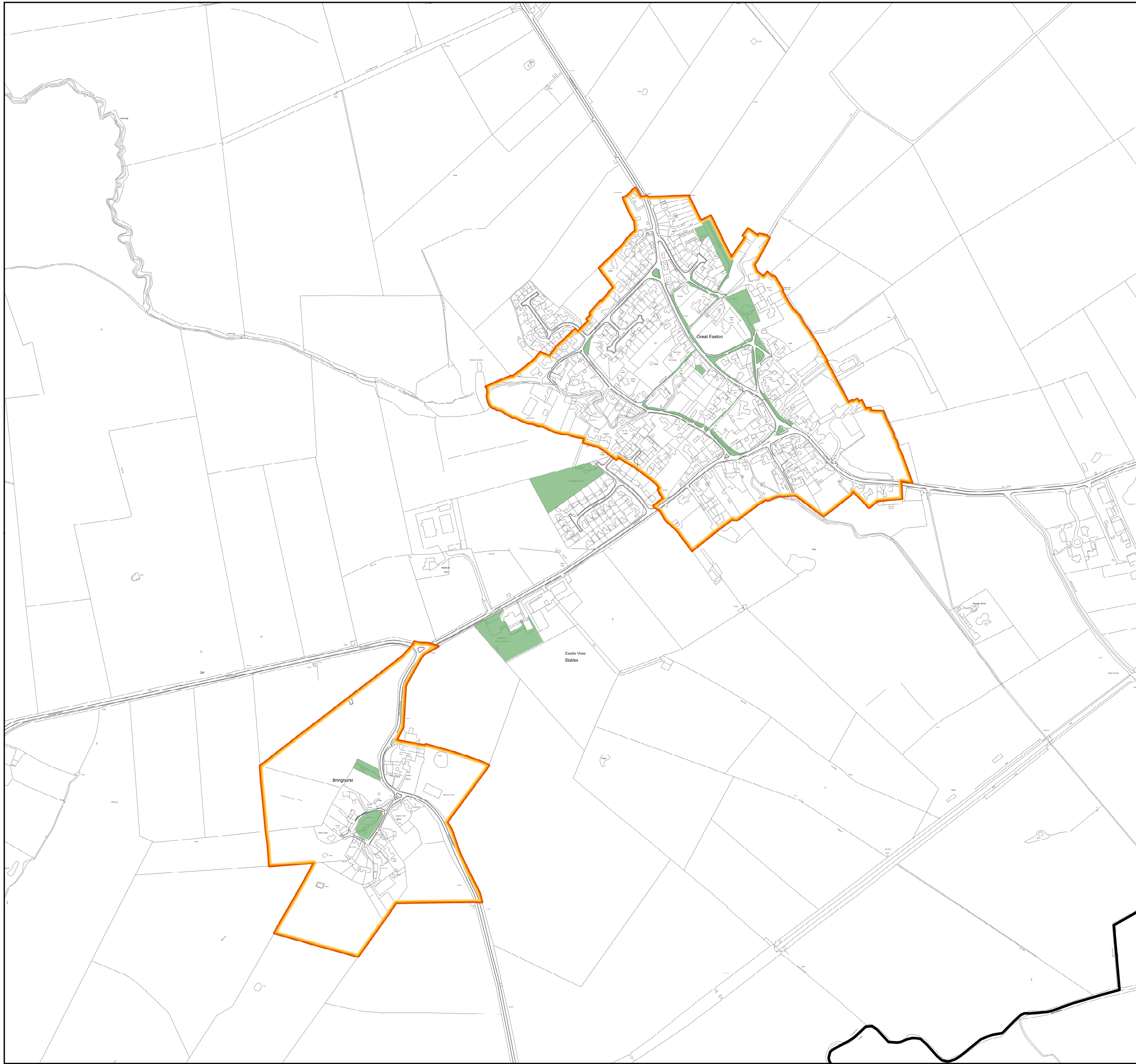


Harborough Local Plan 2020 - 2041

Proposed Submission March
2025



Inset Map: 60
(Great Easton with Bringhurst)



Legend

- Strategic Development Area (SA01)
- Housing Allocations (SA01)
- Employment Allocation (SA01)
- New Gypsy, Traveller and Travelling Showpeople sites (HN06)
- Existing Gypsy, Traveller and Travelling Showpeople sites (HN06)
- Key Employment Areas (DS02)
- General Employment Areas (DS02)
- Bruntingthorpe Proving Ground (DM13)
- Bruntingthorpe Industrial Estate (DM13)
- Leicester Airport (DM13)
- Complex North of Gartree Road (DM13)
- Magna Park (DS02)
- Retail Allocation (SA01)
- Town Centre Boundaries (DS02)
- District Centre (DS02)
- Local Centre Boundary (DS02)
- Market Harborough Primary Shopping Area (AP02)
- Conservation Areas (DM03)
- Green Wedge (DS04)
- Local Nature Reserve (DS03, DM10)
- Local Green Spaces (DM05)
- Open Space, Sport and Recreation Facilities (DS05)
- Sites of Special Scientific Interest (SSSIs) (DS03, DM10)
- Areas of Separation (DS04)
- Regionally Important Geological or Geomorphological Sites (RIGs) (DS03, DM10)
- Harborough District Boundary

Notes:

Reference numbers in the key refer to Policies in the Local Plan.

Policies that apply across the District are included in the Local Plan, but not shown on the Policies Map.

Items listed within the legend are applicable across multiple inset maps and are not bespoke to each page.



1:7,500 @A3

©Crown Copyright. All rights reserved. Harborough District Council 100023843 2024

Harborough District Council

