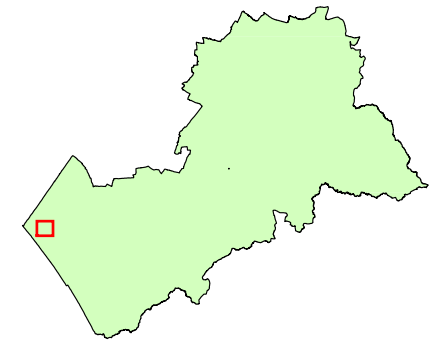
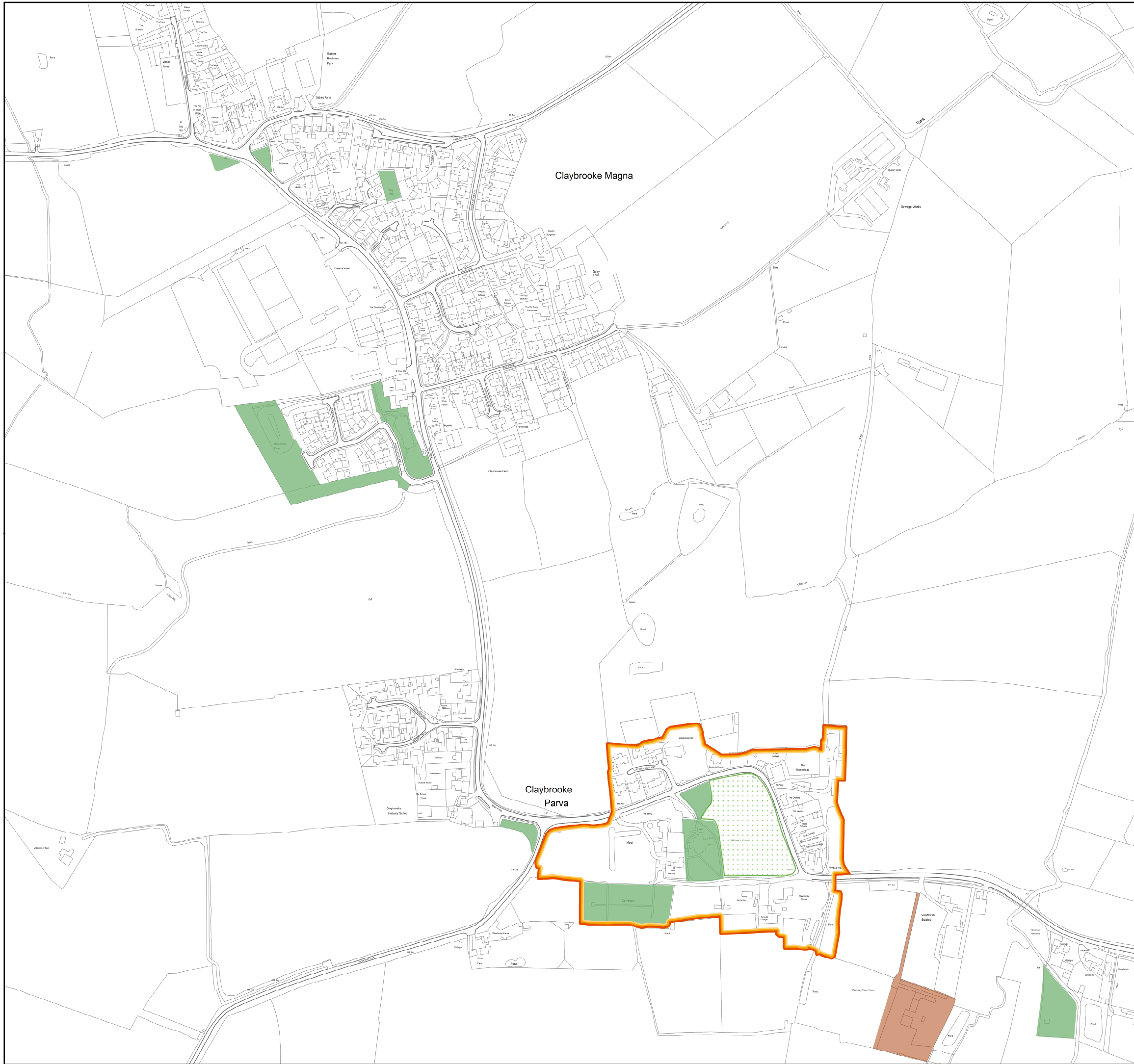


Harborough Local Plan 2020 - 2041

Proposed Submission March
2025



Inset Map: 52
(Claybrooke Magna and Parva)



Legend

- Strategic Development Area (SA01)
- Housing Allocations (SA01)
- Employment Allocation (SA01)
- New Gypsy, Traveller and Travelling Showpeople sites (HN06)
- Existing Gypsy, Traveller and Travelling Showpeople sites (HN06)
- Key Employment Areas (DS02)
- General Employment Areas (DS02)
- Bruntingthorpe Proving Ground (DM13)
- Bruntingthorpe Industrial Estate (DM13)
- Leicester Airport (DM13)
- Complex North of Gartree Road (DM13)
- Magna Park (DS02)
- Retail Allocation (SA01)
- Town Centre Boundaries (DS02)
- District Centre (DS02)
- Local Centre Boundary (DS02)
- Market Harborough Primary Shopping Area (AP02)
- Conservation Areas (DM03)
- Green Wedge (DS04)
- Local Nature Reserve (DS03, DM10)
- Local Green Spaces (DM05)
- Open Space, Sport and Recreation Facilities (DS05)
- Sites of Special Scientific Interest (SSSIs) (DS03, DM10)
- Areas of Separation (DS04)
- Regionally Important Geological or Geomorphological Sites (RIGs) (DS03, DM10)
- Harborough District Boundary

Notes:

Reference numbers in the key refer to Policies in the Local Plan.

Policies that apply across the District are included in the Local Plan , but not shown on the Policies Map.

Items listed within the legend are applicable across multiple inset maps and are not bespoke to each page.



1:5,000 @A3

©Crown Copyright. All rights reserved. Harborough District Council 100023843 2024

Harborough District Council

