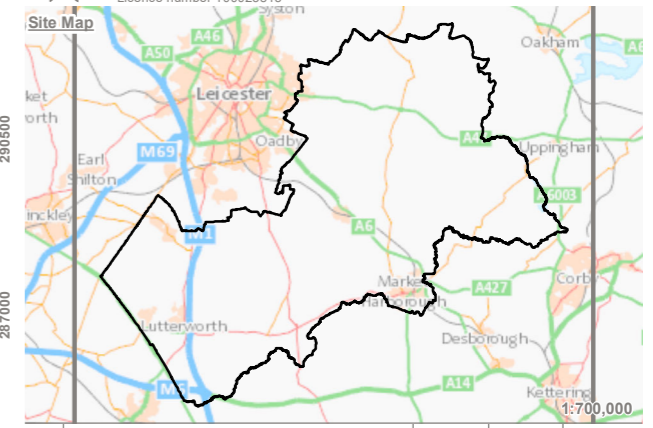


KEY

- Harborhough District Boundary
- Value Audit**
- Value Score**
- High - 60 to 100%
- Medium - 40 to 59%
- Low - 0 to 39%
- Partial Audit**
- Open Space

Refer to the Open Space Strategy draft report (TEP ref: 8202.008) for further detail on the scoring method.

Reproduced by permission of Ordnance Survey on behalf of Her Majesty's Stationary Office.
 Contains OS data © Crown Copyright and database right 2021. All rights reserved.
 © Harborhough District Council
 Licence number 100023843



| Rev | Description | Drawn | Approved | Date |
|-----|-------------|-------|----------|------|
| | | | | |

TEP | **THE ENVIRONMENT PARTNERSHIP**

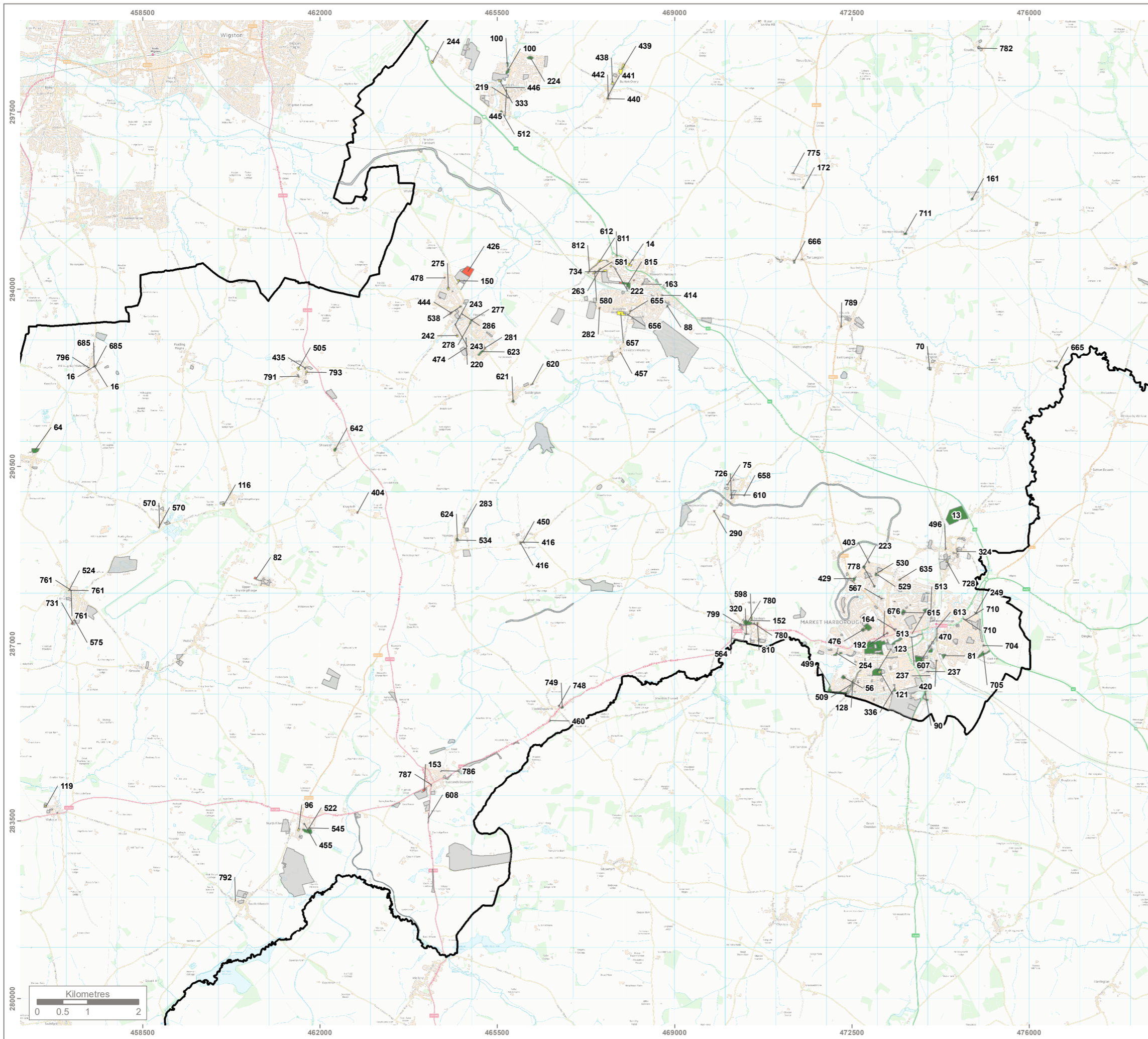
Genesis Centre, Birchwood Science Park, Warrington WA3 7BH
 Tel 01925 844004 e-mail tep@tep.uk.com www.tep.uk.com

Project
Harborhough District Council Open Space Strategy

Title
Open Space Value Score - Overview

Drawing Number
G8202.016.1 Sheet 1 of 10

| Drawn | Checked | Approved | Scale | Date |
|-------|---------|----------|----------------|------------|
| SA | JO | RM | 1:150,000 @ A3 | 09/02/2021 |

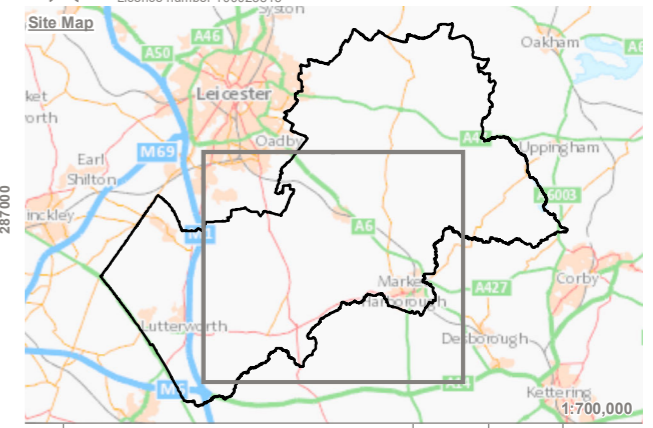


KEY

- Harbourh District Boundary
- Value Audit**
- Value Score**
- High - 60 to 100%
- Medium - 40 to 59%
- Low - 0 to 39%
- Partial Audit**
- Open Space

Refer to the Open Space Strategy draft report (TEP ref: 8202.008) for further detail on the scoring method.

Reproduced by permission of Ordnance Survey on behalf of Her Majesty's Stationery Office.
 Contains OS data © Crown Copyright and database right 2021. All rights reserved.
 © Harbourh District Council
 Licence number 100023843



| Rev | Description | Drawn | Approved | Date |
|-----|-------------|-------|----------|------|
| | | | | |

THE ENVIRONMENT PARTNERSHIP

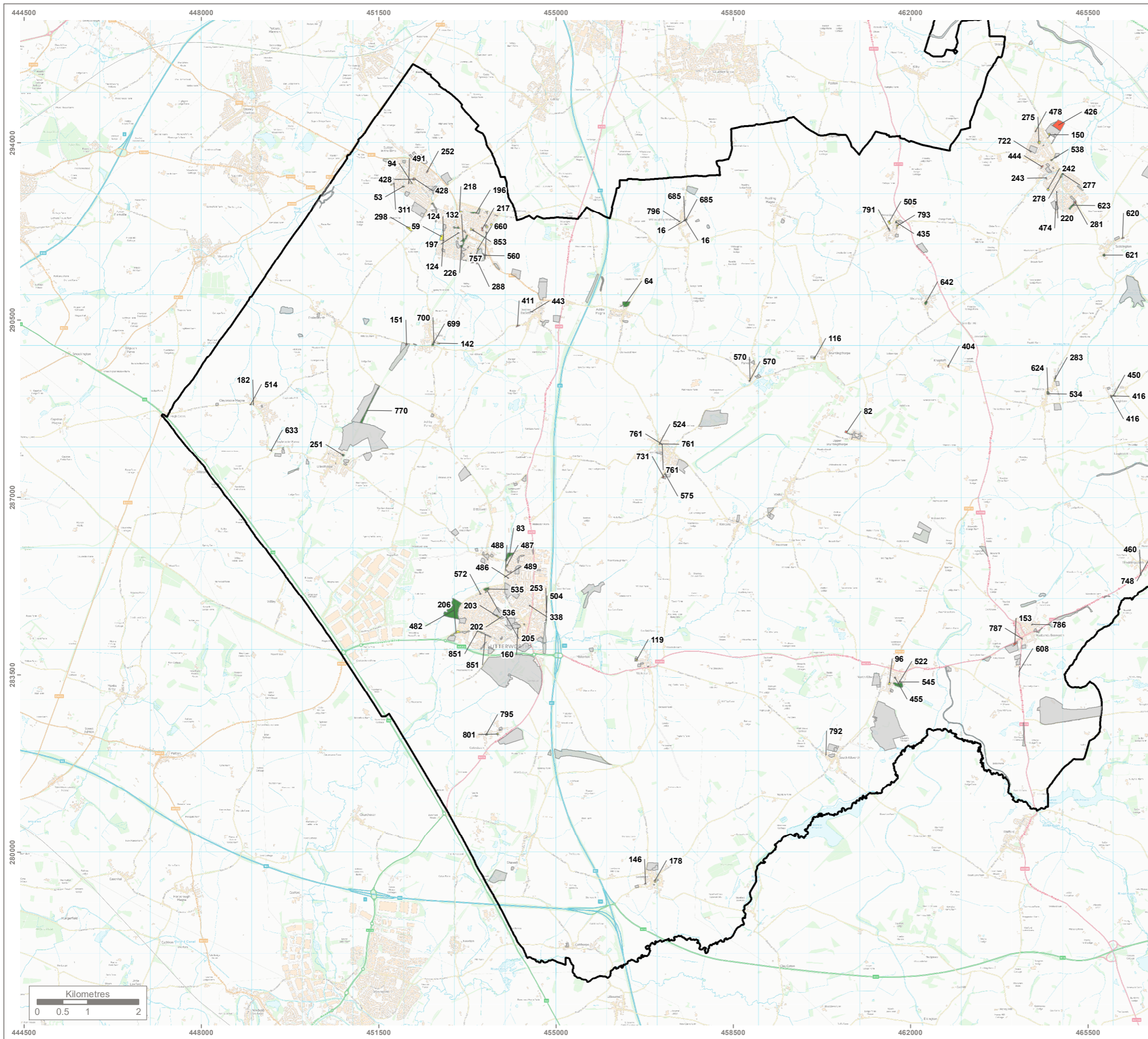
Genesis Centre, Birchwood Science Park, Warrington WA3 7BH
 Tel 01925 844004 e-mail tep@tep.uk.com www.tep.uk.com

Project
 Harbourh District Council Open Space Strategy

Title
 Open Space Value Score - Middle

Drawing Number
 G8202.016.3 Sheet 3 of 10

| | | | | |
|-------------|---------------|----------------|------------------------|--------------------|
| Drawn SA | Checked JO | Approved RM | Scale 1:75,000 @ A3 | Date 09/02/2021 |
|-------------|---------------|----------------|------------------------|--------------------|

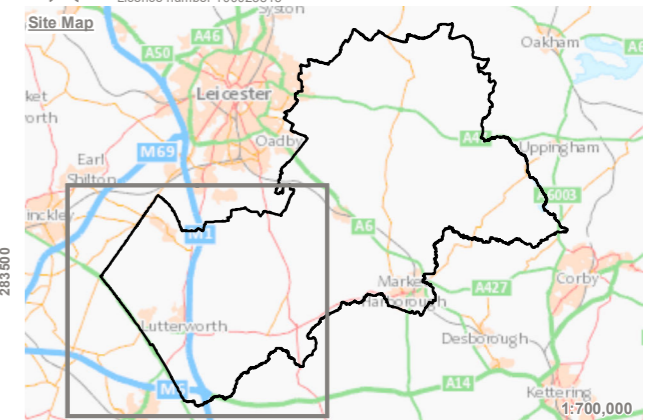


KEY

- Harborough District Boundary
- Value Audit**
- Value Score**
- High - 60 to 100%
- Medium - 40 to 59%
- Low - 0 to 39%
- Partial Audit**
- Open Space

Refer to the Open Space Strategy draft report (TEP ref: 8202.008) for further detail on the scoring method.

Reproduced by permission of Ordnance Survey on behalf of Her Majesty's Stationery Office.
 Contains OS data © Crown Copyright and database right 2021. All rights reserved.
 © Harborough District Council
 Licence number 100023843



| Rev | Description | Drawn | Approved | Date |
|-----|-------------|-------|----------|------|
| | | | | |



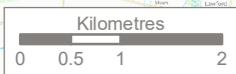
Genesis Centre, Birchwood Science Park, Warrington WA3 7BH
 Tel 01925 844004 e-mail tep@tep.uk.com www.tep.uk.com

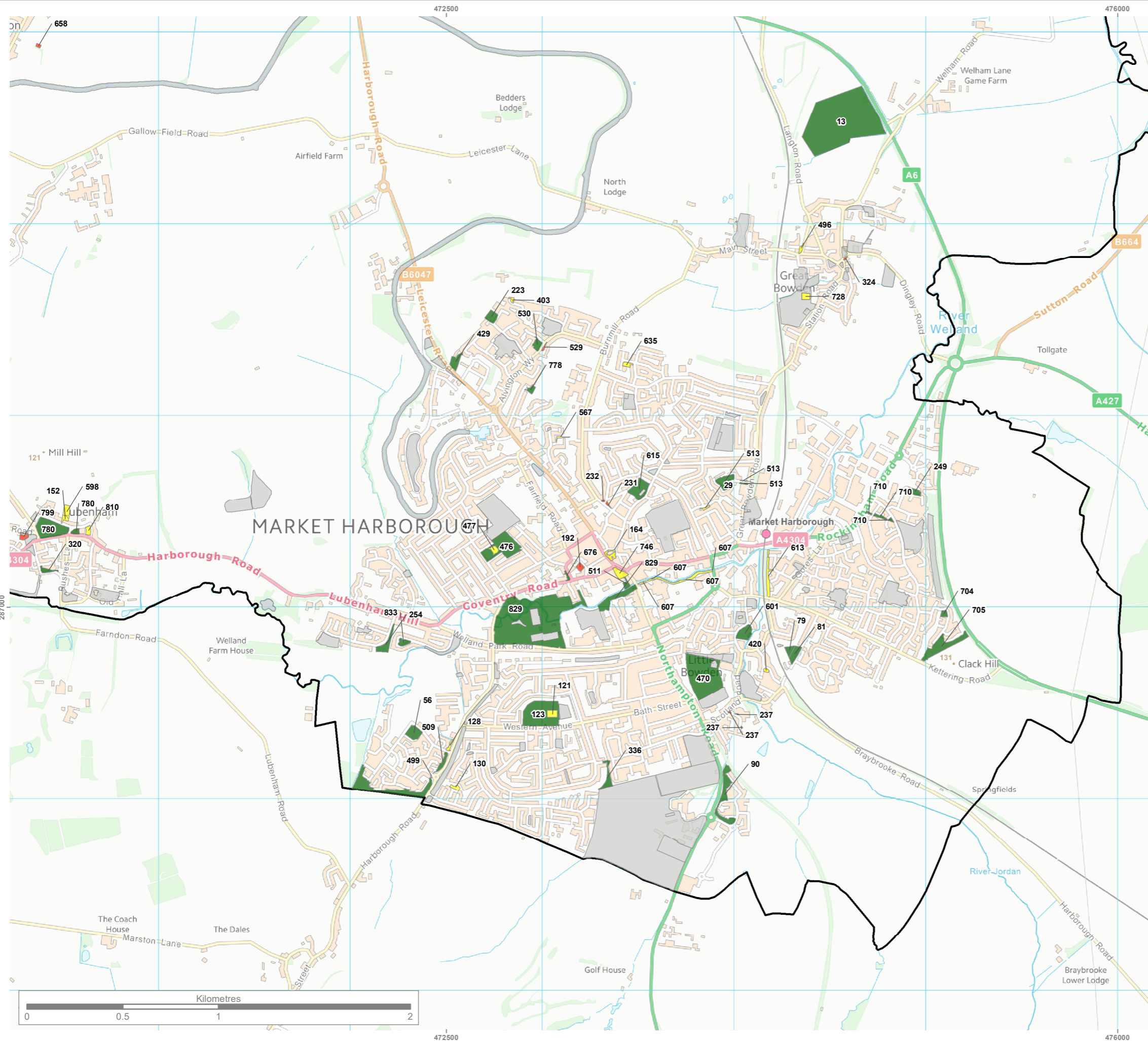
Project
 Harborough District Council Open Space Strategy

Title
 Open Space Value Score - West

Drawing Number
 G8202.016.4 Sheet 4 of 10

| Drawn | Checked | Approved | Scale | Date |
|-------|---------|----------|---------------|------------|
| SA | JO | RM | 1:75,000 @ A3 | 09/02/2021 |



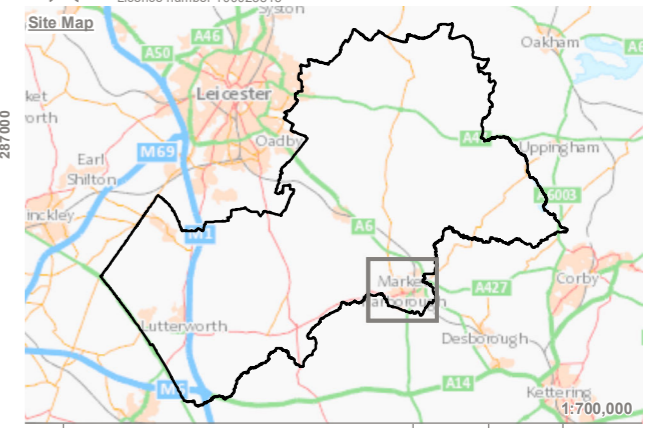


KEY

- Harbrough District Boundary
- Value Audit**
- Value Score**
- High - 60 to 100%
- Medium - 40 to 59%
- Low - 0 to 39%
- Partial Audit**
- Open Space

Refer to the Open Space Strategy draft report (TEP ref: 8202.008) for further detail on the scoring method.

Reproduced by permission of Ordnance Survey on behalf of Her Majesty's Stationary Office.
 Contains OS data © Crown Copyright and database right 2021. All rights reserved.
 © Harbrough District Council
 Licence number 100023843



| Rev | Description | Drawn | Approved | Date |
|-----|-------------|-------|----------|------|
| | | | | |

TEP | **THE ENVIRONMENT PARTNERSHIP**

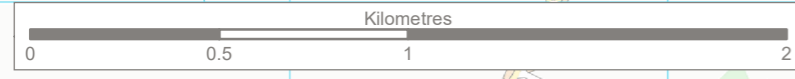
Genesis Centre, Birchwood Science Park, Warrington WA3 7BH
 Tel 01925 844004 e-mail tep@tep.uk.com www.tep.uk.com

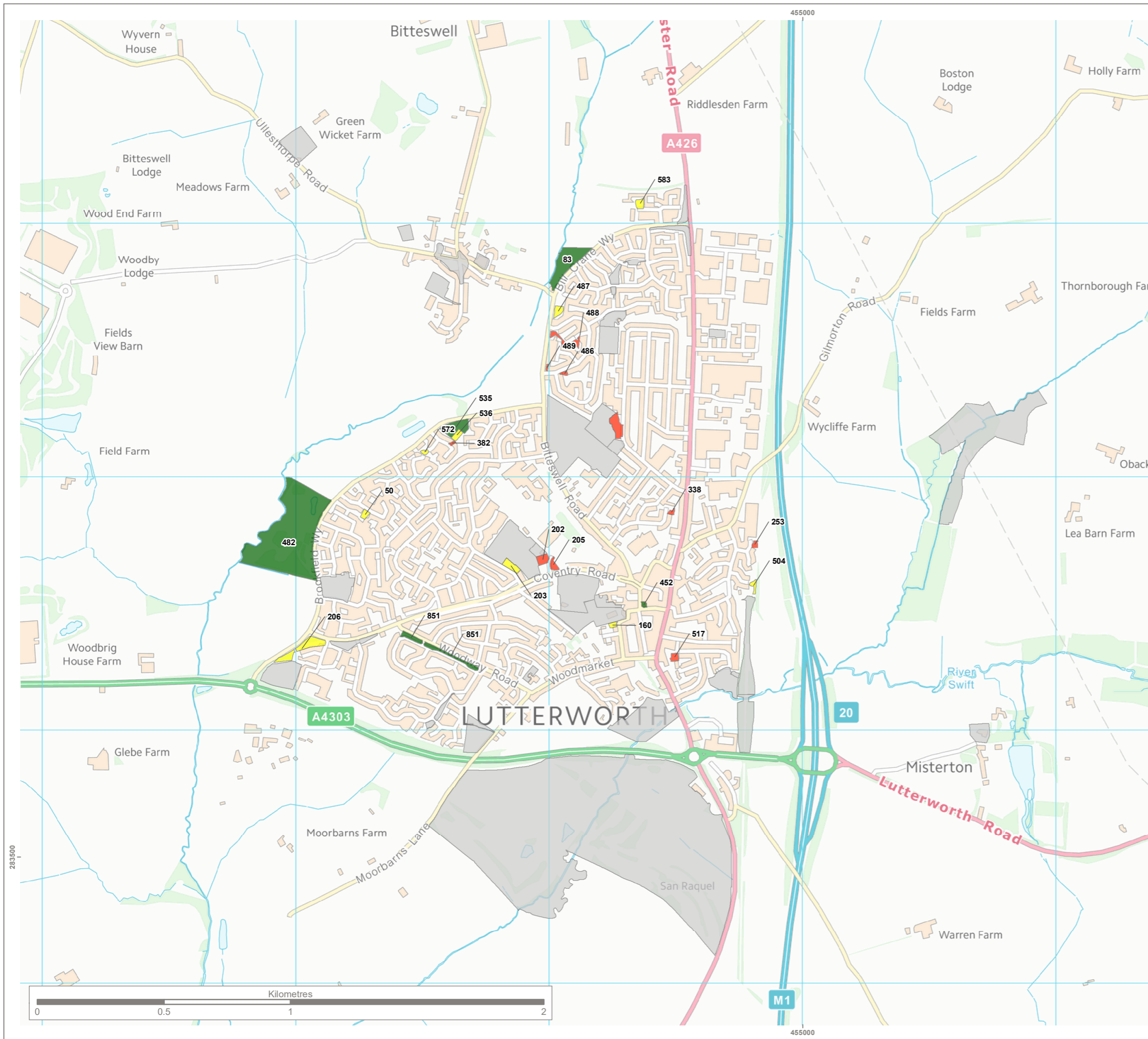
Project
Harbrough District Council Open Space Strategy

Title
Open Space Value Score - Harbrough

Drawing Number
G8202.016.5 Sheet 5 of 10

| Drawn | Checked | Approved | Scale | Date |
|-------|---------|----------|---------------|------------|
| SA | JO | RM | 1:20,000 @ A3 | 09/02/2021 |



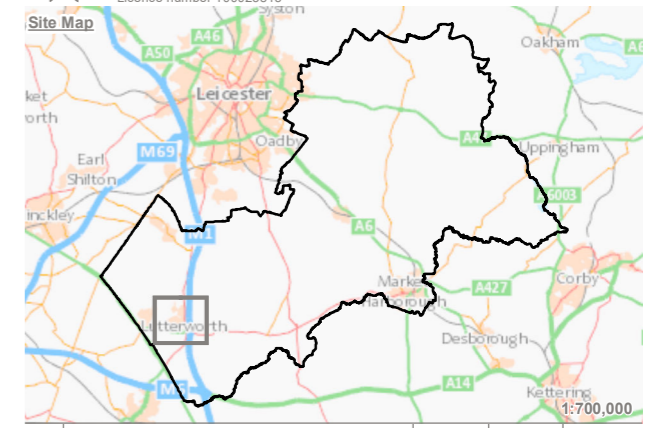


KEY

- Harborough District Boundary
- Value Audit**
- Value Score**
- High - 60 to 100%
- Medium - 40 to 59%
- Low - 0 to 39%
- Partial Audit**
- Open Space

Refer to the Open Space Strategy draft report (TEP ref: 8202.008) for further detail on the scoring method.

Reproduced by permission of Ordnance Survey on behalf of Her Majesty's Stationery Office.
 Contains OS data © Crown Copyright and database right 2021. All rights reserved.
 © Harborough District Council
 Licence number 100023843



| Rev | Description | Drawn | Approved | Date |
|-----|-------------|-------|----------|------|
| | | | | |

TEP | **THE ENVIRONMENT PARTNERSHIP**

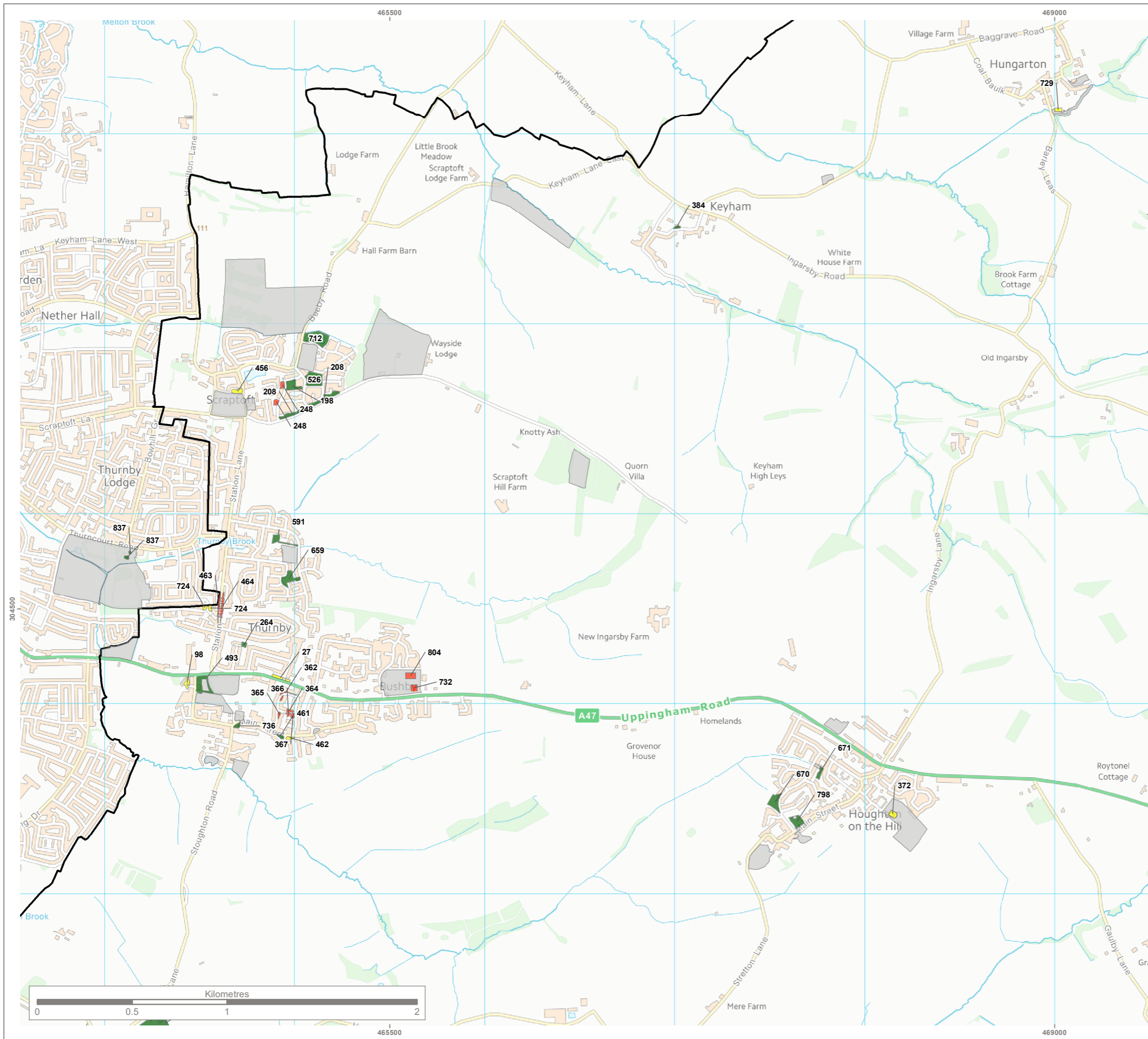
Genesis Centre, Birchwood Science Park, Warrington WA3 7BH
 Tel 01925 844004 e-mail tep@tep.uk.com www.tep.uk.com

Project
Harborough District Council Open Space Strategy

Title
Open Space Value Score - Lutterworth

Drawing Number
G8202.016.6 Sheet 6 of 10

| Drawn | Checked | Approved | Scale | Date |
|-------|---------|----------|---------------|------------|
| SA | JO | RM | 1:15,000 @ A3 | 09/02/2021 |

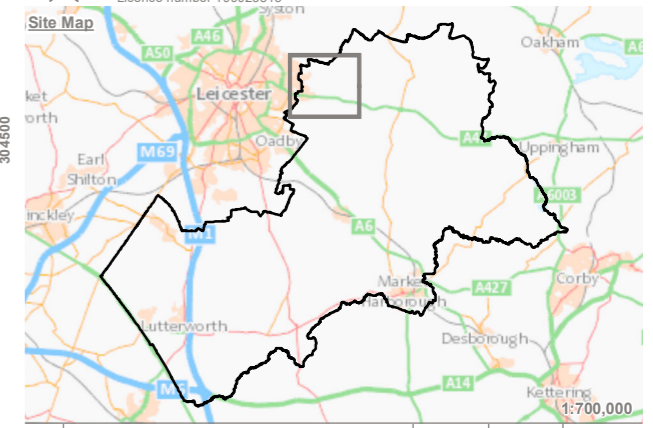


KEY

- Harborough District Boundary
- Value Audit**
- Value Score**
- High - 60 to 100%
- Medium - 40 to 59%
- Low - 0 to 39%
- Partial Audit**
- Open Space

Refer to the Open Space Strategy draft report (TEP ref: 8202.008) for further detail on the scoring method.

Reproduced by permission of Ordnance Survey on behalf of Her Majesty's Stationery Office.
 Contains OS data © Crown Copyright and database right 2021. All rights reserved.
 © Harborough District Council
 Licence number 100023843



| Rev | Description | Drawn | Approved | Date |
|-----|-------------|-------|----------|------|
| | | | | |

TEP | **THE ENVIRONMENT PARTNERSHIP**

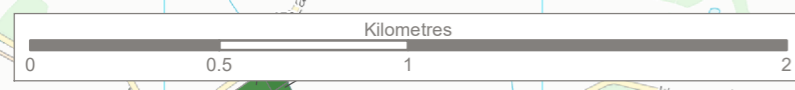
Genesis Centre, Birchwood Science Park, Warrington WA3 7BH
 Tel 01925 844004 e-mail tep@tep.uk.com www.tep.uk.com

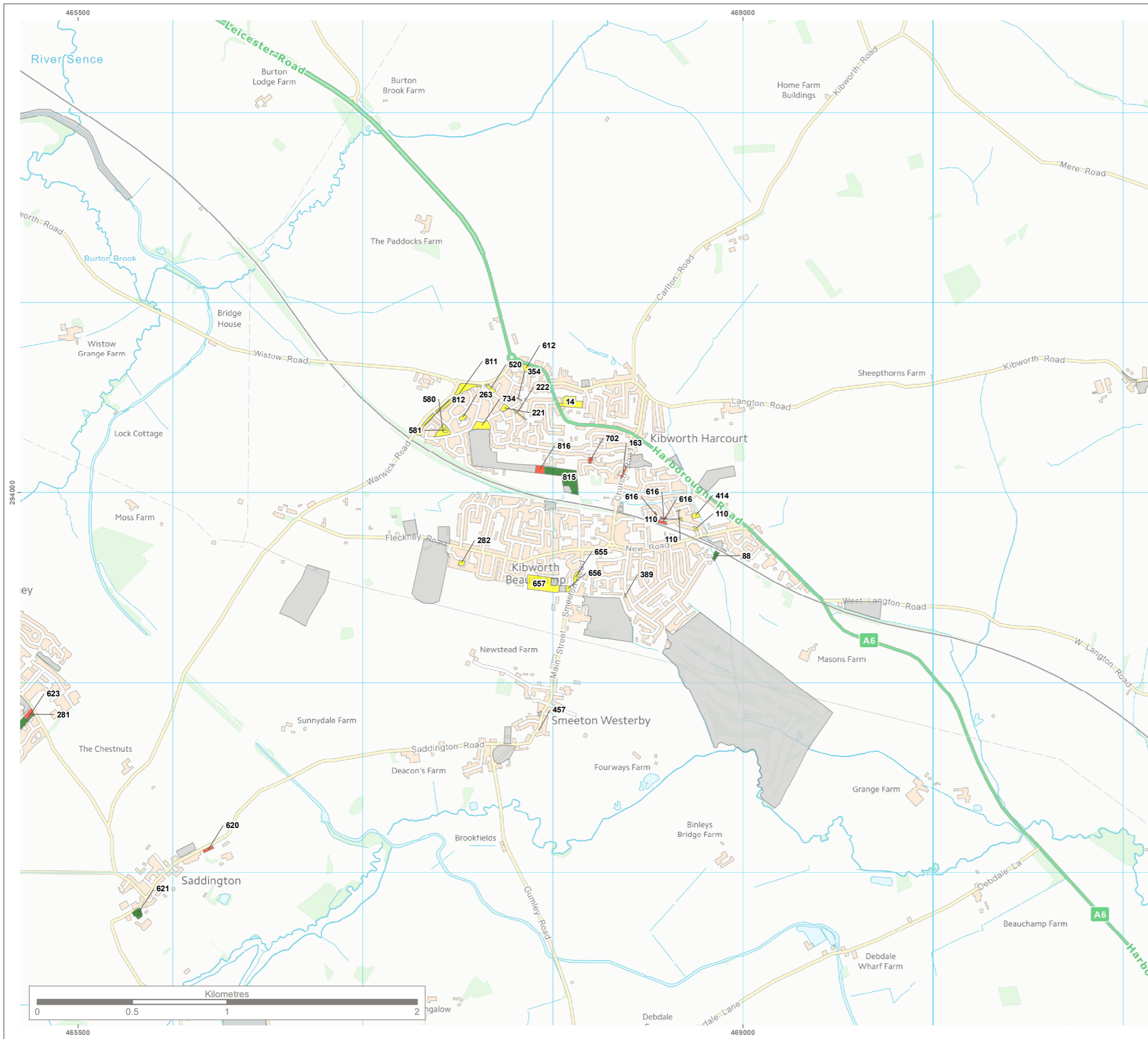
Project
Harborough District Council Open Space Strategy

Title
Open Space Value Score - Thurnby

Drawing Number
G8202.016.7 Sheet 7 of 10

| Drawn | Checked | Approved | Scale | Date |
|-------|---------|----------|---------------|------------|
| SA | JO | RM | 1:20,000 @ A3 | 09/02/2021 |



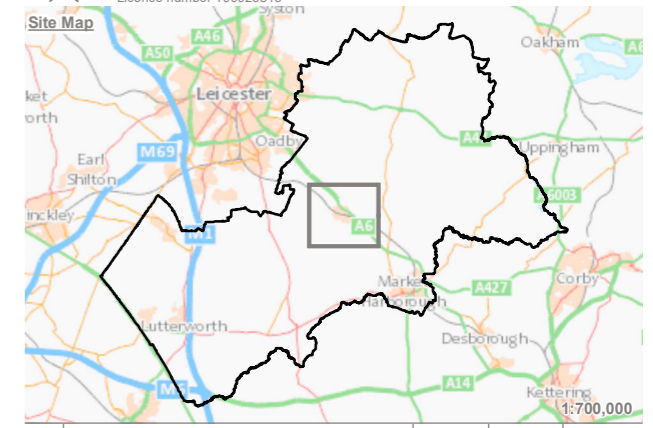


KEY

- Harborough District Boundary
- Value Audit**
- Value Score**
- High - 60 to 100%
- Medium - 40 to 59%
- Low - 0 to 39%
- Partial Audit**
- Open Space

Refer to the Open Space Strategy draft report (TEP ref: 8202.008) for further detail on the scoring method.

Reproduced by permission of Ordnance Survey on behalf of Her Majesty's Stationery Office.
 Contains OS data © Crown Copyright and database right 2021. All rights reserved.
 © Harborough District Council
 Licence number 100023843



| Rev | Description | Drawn | Approved | Date |
|-----|-------------|-------|----------|------|
| | | | | |

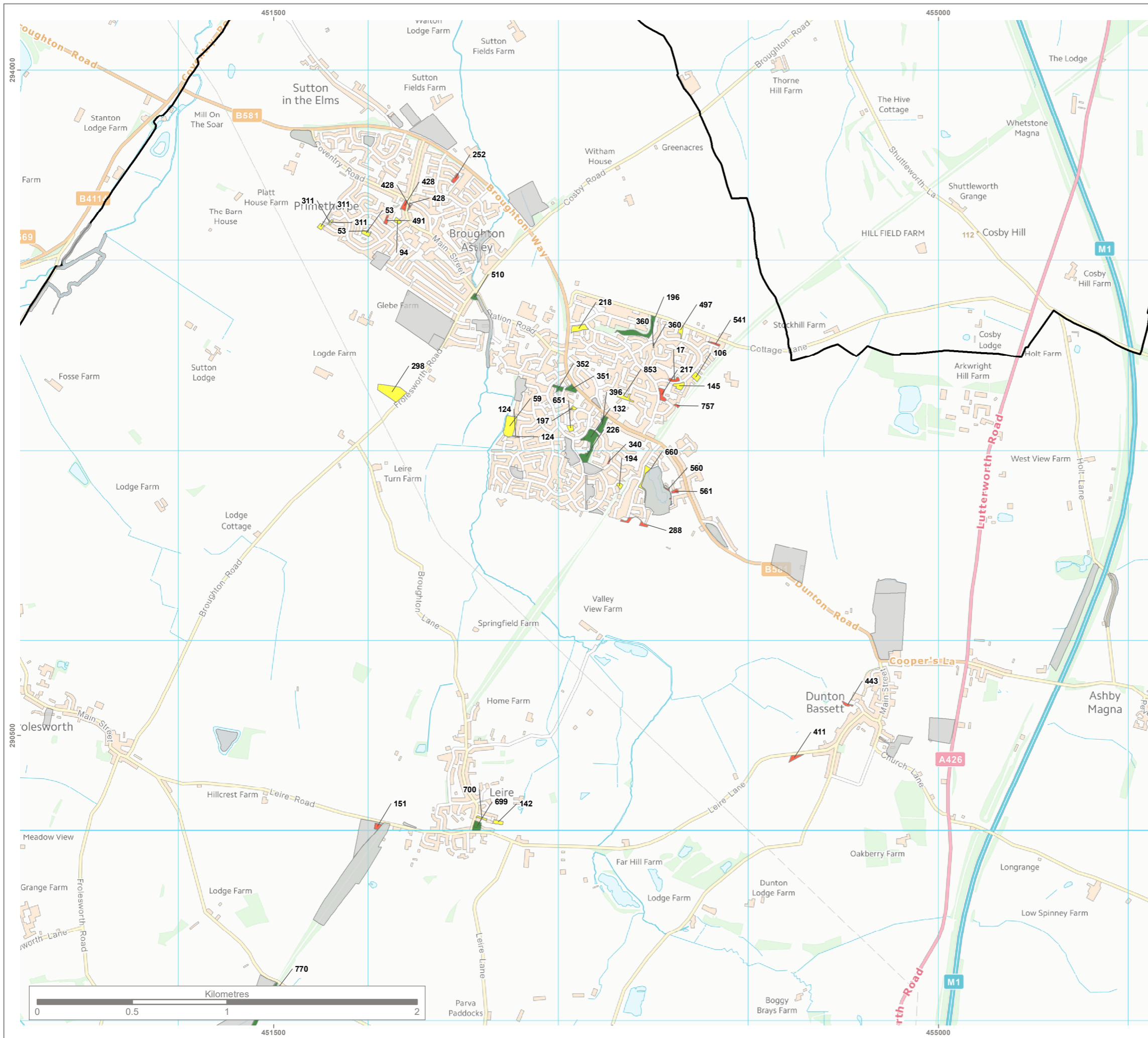
TEP | **THE ENVIRONMENT PARTNERSHIP**
 Genesis Centre, Birchwood Science Park, Warrington WA3 7BH
 Tel 01925 844004 e-mail tep@tep.uk.com www.tep.uk.com

Project
Harborough District Council Open Space Strategy

Title
Open Space Value Score - Kibworth Harcourt

Drawing Number
G8202.016.8 Sheet 8 of 10

| Drawn | Checked | Approved | Scale | Date |
|-------|---------|----------|---------------|------------|
| SA | JO | RM | 1:20,000 @ A3 | 09/02/2021 |

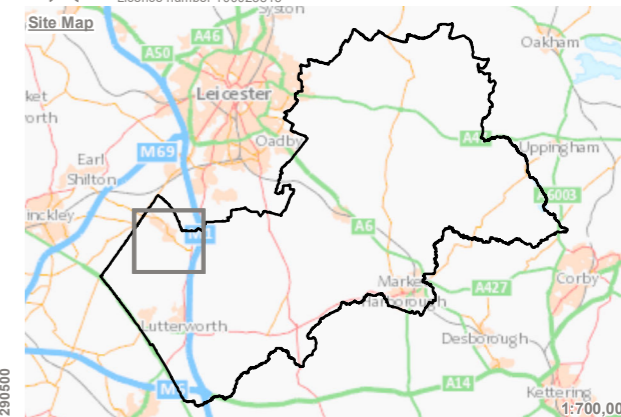


KEY

- Harborough District Boundary
- Value Audit**
- Value Score**
- High - 60 to 100%
- Medium - 40 to 59%
- Low - 0 to 39%
- Partial Audit**
- Open Space

Refer to the Open Space Strategy draft report (TEP ref: 8202.008) for further detail on the scoring method.

Reproduced by permission of Ordnance Survey on behalf of Her Majesty's Stationery Office.
 Contains OS data © Crown Copyright and database right 2021. All rights reserved.
 © Harborough District Council
 Licence number 100023843



| Rev | Description | Drawn | Approved | Date |
|-----|-------------|-------|----------|------|
| | | | | |

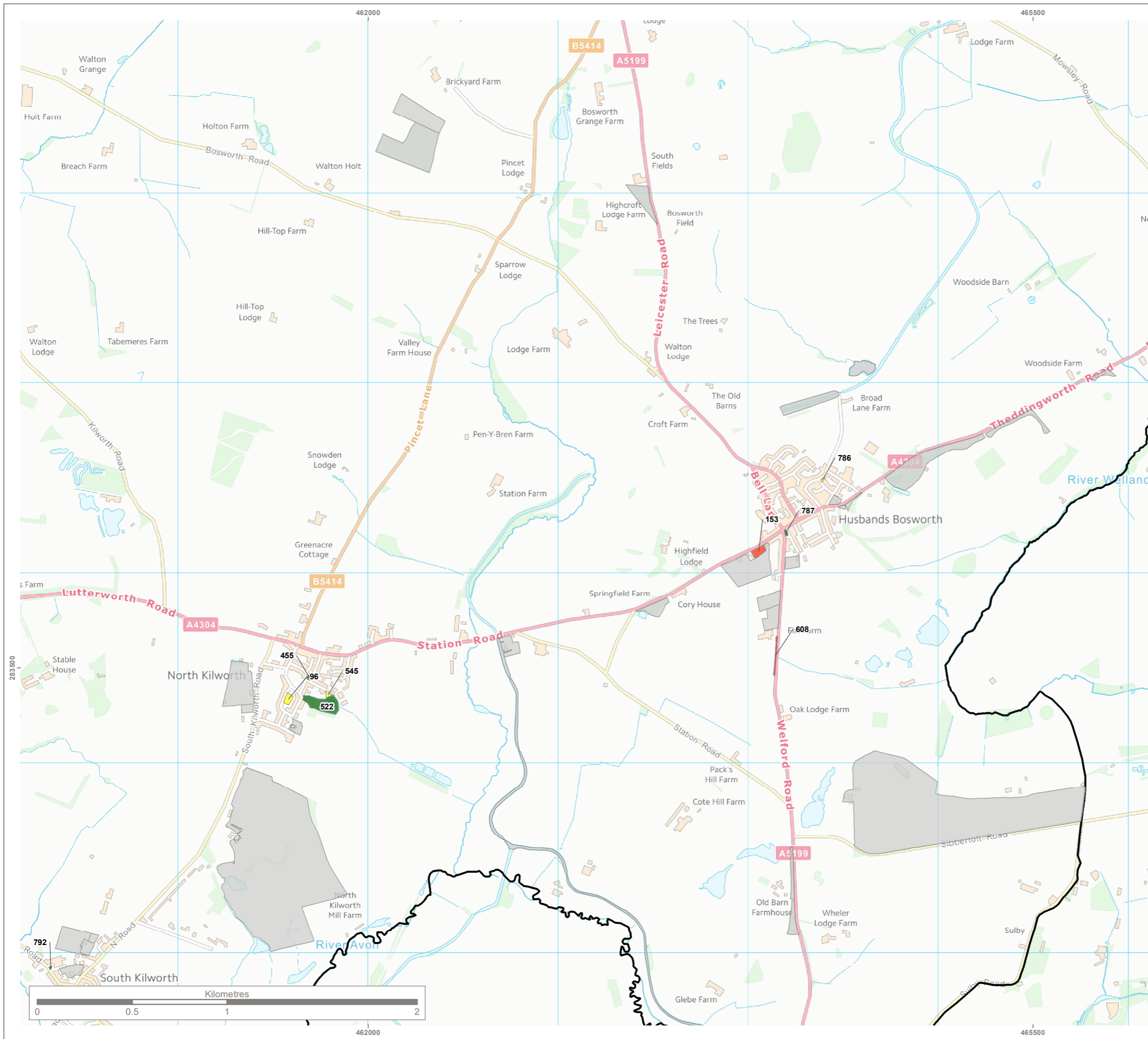
TEP | **THE ENVIRONMENT PARTNERSHIP**
 Genesis Centre, Birchwood Science Park, Warrington WA3 7BH
 Tel 01925 844004 e-mail tep@tep.uk.com www.tep.uk.com

Project
Harborough District Council Open Space Strategy

Title
Open Space Value Score - Broughton Astley

Drawing Number
G8202.016.9 Sheet 9 of 10

| Drawn | Checked | Approved | Scale | Date |
|-------|---------|----------|---------------|------------|
| SA | JO | RM | 1:20,000 @ A3 | 09/02/2021 |

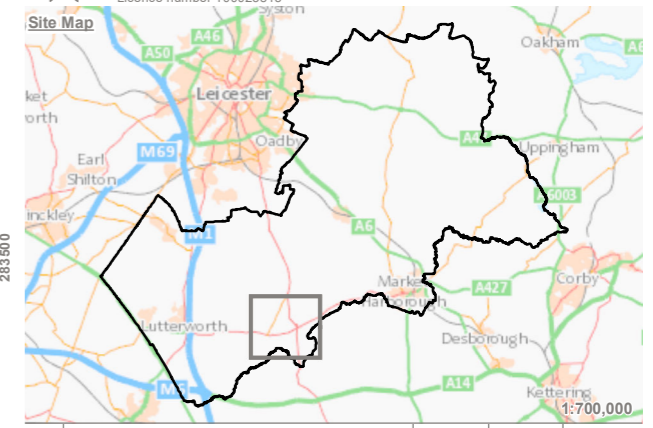


KEY

- Harborough District Boundary
- Value Audit**
- Value Score**
- High - 60 to 100%
- Medium - 40 to 59%
- Low - 0 to 39%
- Partial Audit**
- Open Space

Refer to the Open Space Strategy draft report (TEP ref: 8202.008) for further detail on the scoring method.

Reproduced by permission of Ordnance Survey on behalf of Her Majesty's Stationery Office.
 Contains OS data © Crown Copyright and database right 2021. All rights reserved.
 © Harborough District Council
 Licence number 100023843



| Rev | Description | Drawn | Approved | Date |
|-----|-------------|-------|----------|------|
| | | | | |

TEP | **THE ENVIRONMENT PARTNERSHIP**

Genesis Centre, Birchwood Science Park, Warrington WA3 7BH
 Tel 01925 844004 e-mail tep@tep.uk.com www.tep.uk.com

Project
Harborough District Council Open Space Strategy

Title
Open Space Value Score - Husbands Bosworth

Drawing Number
G8202.016.10 Sheet 10 of 10

| Drawn | Checked | Approved | Scale | Date |
|-------|---------|----------|---------------|------------|
| SA | JO | RM | 1:20,000 @ A3 | 09/02/2021 |