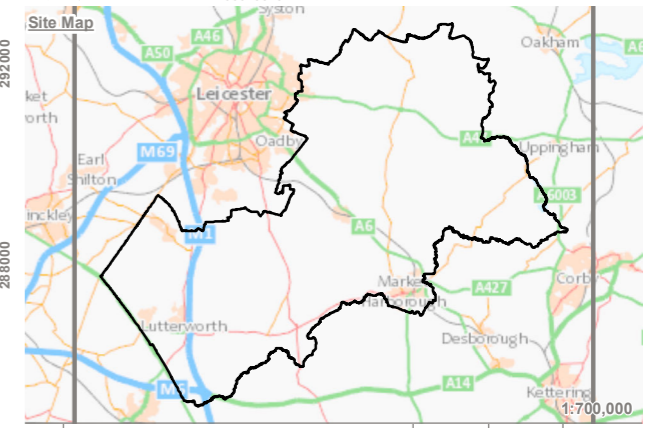


KEY

- Harborough District Boundary
- Open Space Typology**
- Allotments
- Amenity Greenspace
- Cemeteries and churchyards
- Civic Spaces
- Natural and Semi Natural Green Spaces
- Outdoor Sports Facilities
- Parks and Gardens
- Young People and Children



Reproduced by permission of Ordnance Survey on behalf of Her Majesty's Stationery Office.
 Contains OS data © Crown Copyright and database right 2021. All rights reserved.
 © 2021 Harborough District Council
 Licence number 100023843



Rev	Description	SA	RM	Date
A	Typology change.			02/03/2021

TEP | **THE ENVIRONMENT PARTNERSHIP**

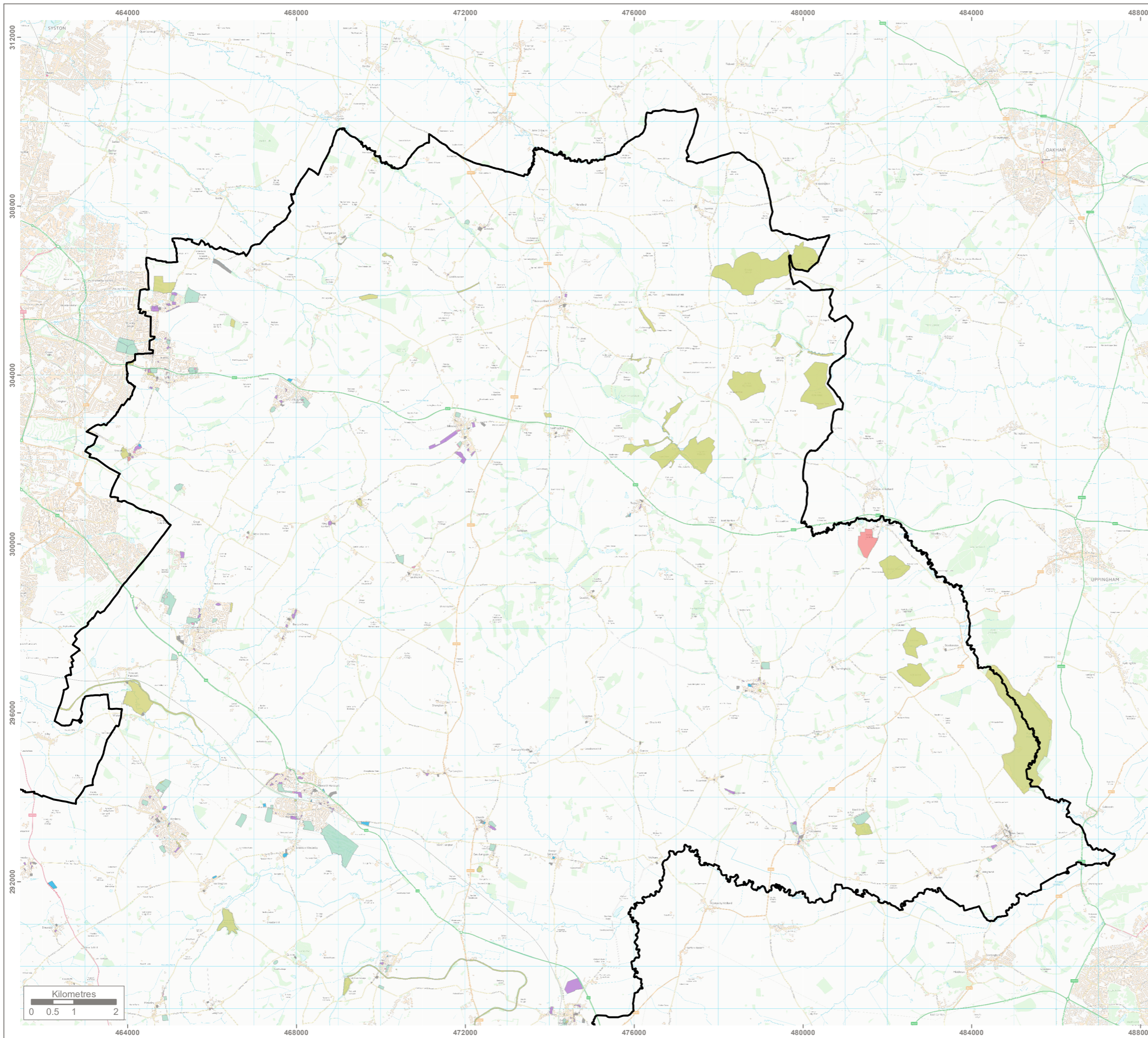
Genesis Centre, Birchwood Science Park, Warrington WA3 7BH
 Tel 01925 844004 e-mail tep@tep.uk.com www.tep.uk.com

Project
Harborough District Council Open Space Strategy

Title
Open Space Typology Map - Overview

Drawing Number
G8202.002A.1 Sheet 1 of 10

Drawn	Checked	Approved	Scale	Date
SA	JO	RM	1:150,000 @ A3	02/03/2021

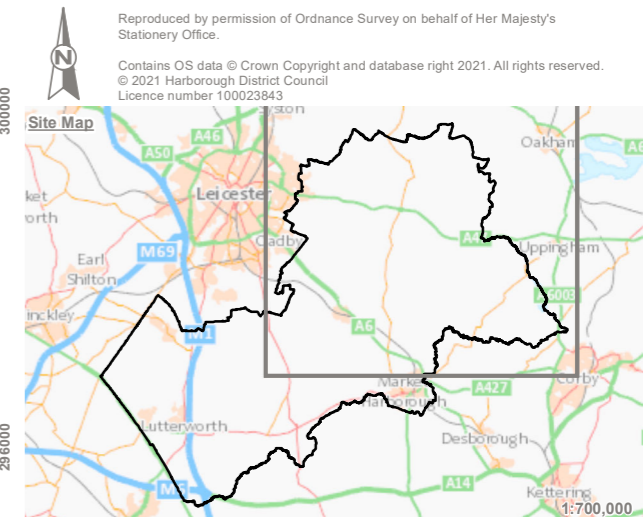


KEY

Harborough District Boundary

Open Space Typology

- Allotments
- Amenity Greenspace
- Cemeteries and churchyards
- Civic Spaces
- Natural and Semi Natural Green Spaces
- Outdoor Sports Facilities
- Parks and Gardens
- Young People and Children



A Typology change.		SA	RM	02/03/2021
Rev	Description	Drawn	Approved	Date

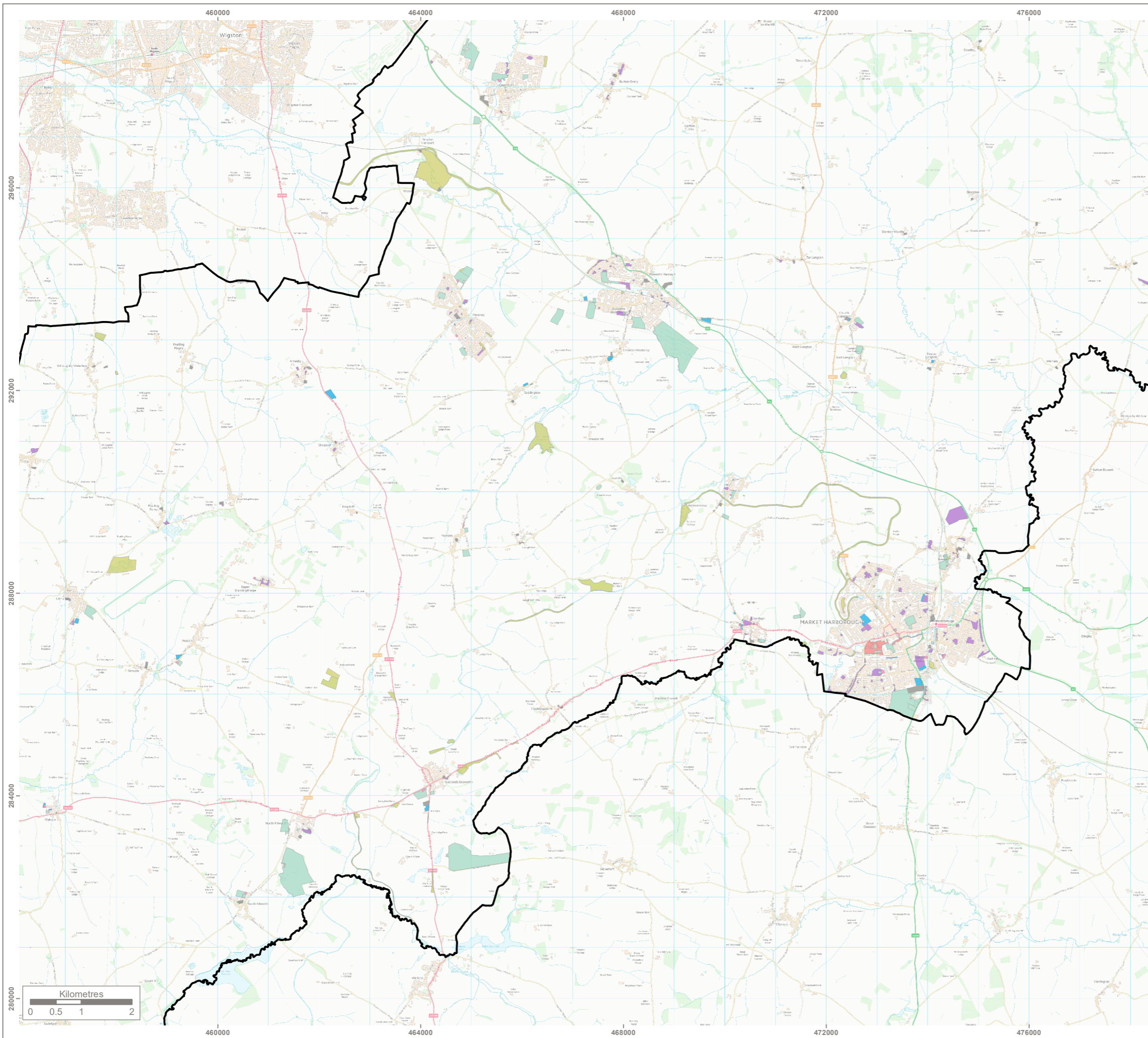
TEP | **THE ENVIRONMENT PARTNERSHIP**
 Genesis Centre, Birchwood Science Park, Warrington WA3 7BH
 Tel 01925 844004 e-mail tep@tep.uk.com www.tep.uk.com

Project
 Harborough District Council Open Space Strategy

Title
 Open Space Typology Map - East

Drawing Number
 G8202.002A.2 Sheet 2 of 10

Drawn	Checked	Approved	Scale	Date
SA	JO	RM	1:90,000 @ A3	02/03/2021



KEY

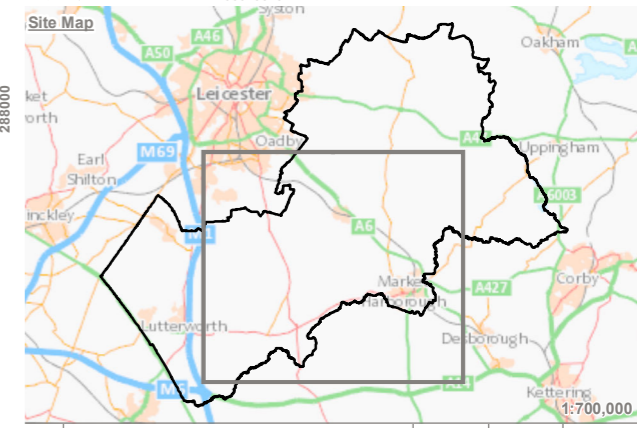
Harbour District Boundary

Open Space Typology

- Allotments
- Amenity Greenspace
- Cemeteries and churchyards
- Civic Spaces
- Natural and Semi Natural Green Spaces
- Outdoor Sports Facilities
- Parks and Gardens
- Young People and Children



Reproduced by permission of Ordnance Survey on behalf of Her Majesty's Stationery Office.
 Contains OS data © Crown Copyright and database right 2021. All rights reserved.
 © 2021 Harborough District Council
 Licence number 100023843



Rev	Description	SA	RM	Date
A	Typology change.	SA	RM	02/03/2021



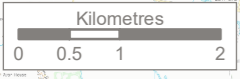
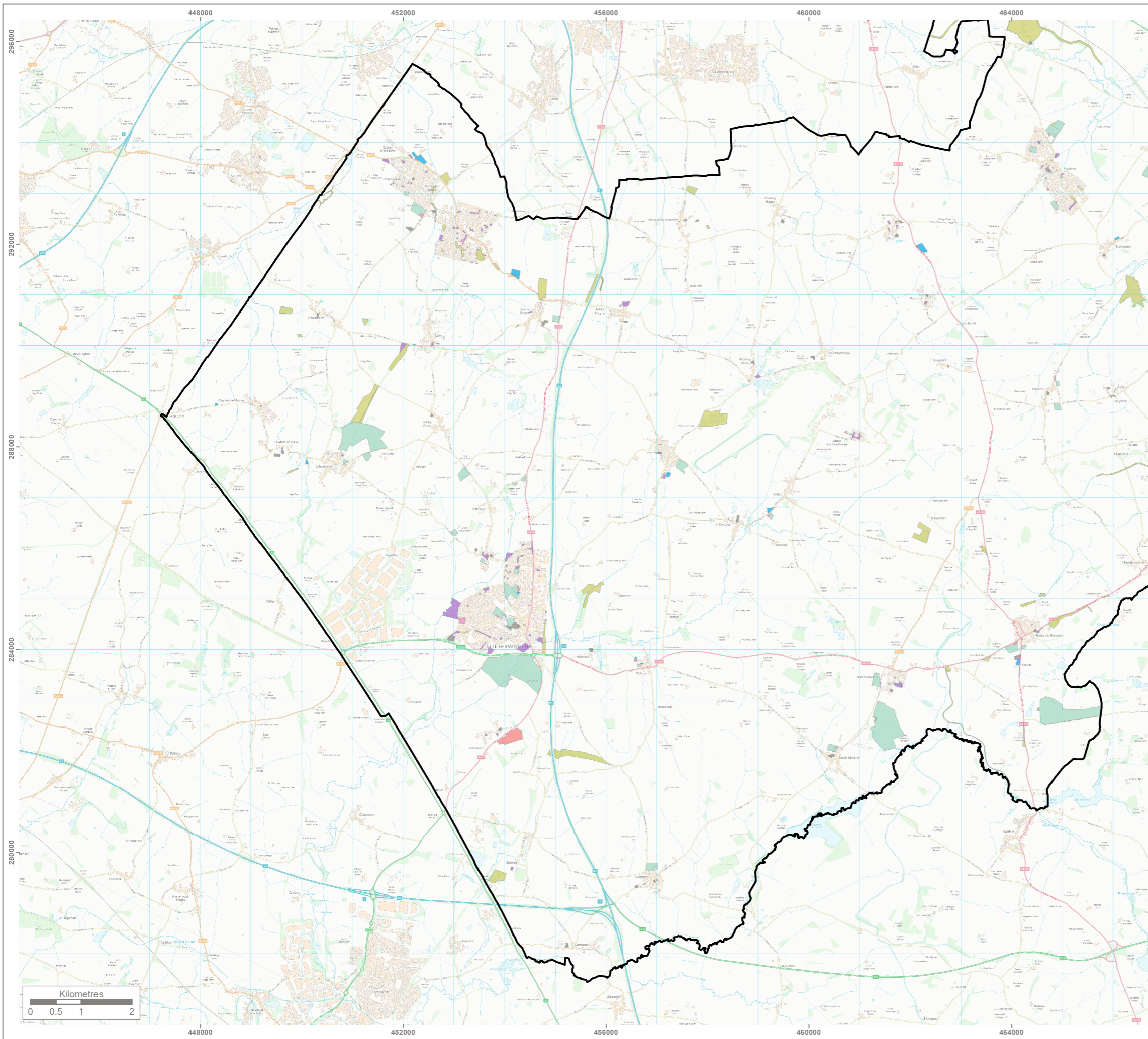
Genesis Centre, Birchwood Science Park, Warrington WA3 7BH
 Tel 01925 844004 e-mail tep@tep.uk.com www.tep.uk.com

Project
 Harborough District Council Open Space Strategy

Title
 Open Space Typology Map - Middle

Drawing Number G8202.002A.3	Sheet 3 of 10
--------------------------------	---------------

Drawn	Checked	Approved	Scale	Date
SA	JO	RM	1:75,000 @ A3	02/03/2021



KEY

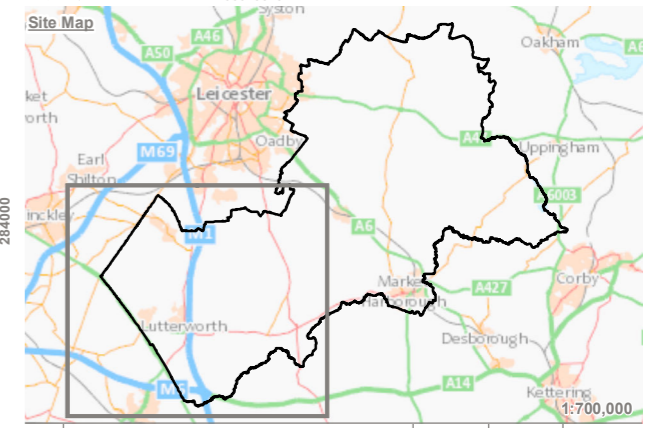
Harborough District Boundary

Open Space Typology

- Allotments
- Amenity Greenspace
- Cemeteries and churchyards
- Civic Spaces
- Natural and Semi Natural Green Spaces
- Outdoor Sports Facilities
- Parks and Gardens
- Young People and Children



Reproduced by permission of Ordnance Survey on behalf of Her Majesty's Stationery Office.
 Contains OS data © Crown Copyright and database right 2021. All rights reserved.
 © 2021 Harborough District Council
 Licence number 100023843



Rev	Description	SA	RM	Date
A	Typology change.			02/03/2021



THE ENVIRONMENT PARTNERSHIP

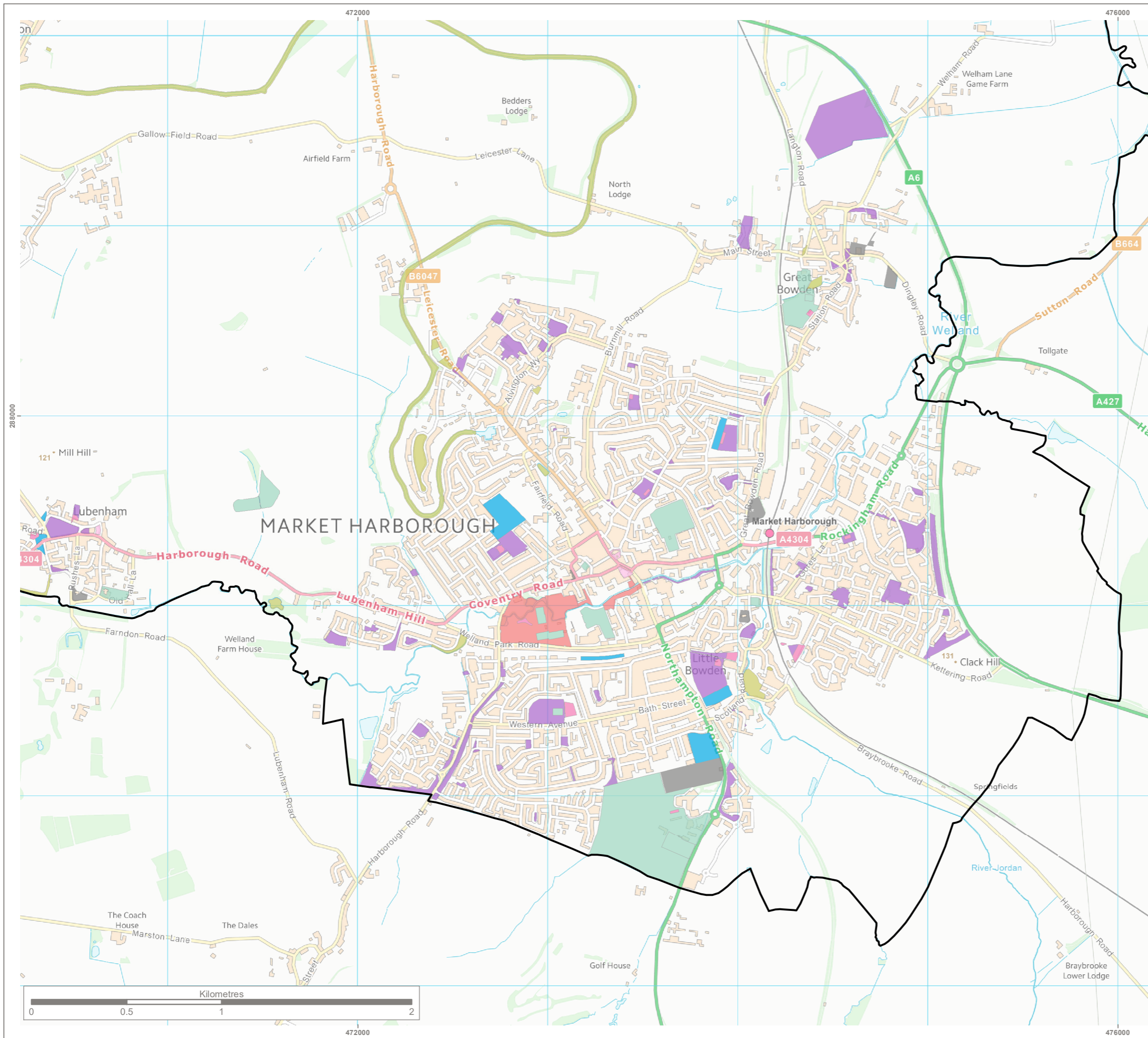
Genesis Centre, Birchwood Science Park, Warrington WA3 7BH
 Tel 01925 844004 e-mail tep@tep.uk.com www.tep.uk.com

Project
 Harborough District Council Open Space Strategy

Title
 Open Space Typology Map - West

Drawing Number G8202.002A.4	Sheet 4 of 10
--------------------------------	---------------

Drawn	Checked	Approved	Scale	Date
SA	JO	RM	1:75,000 @ A3	02/03/2021



KEY

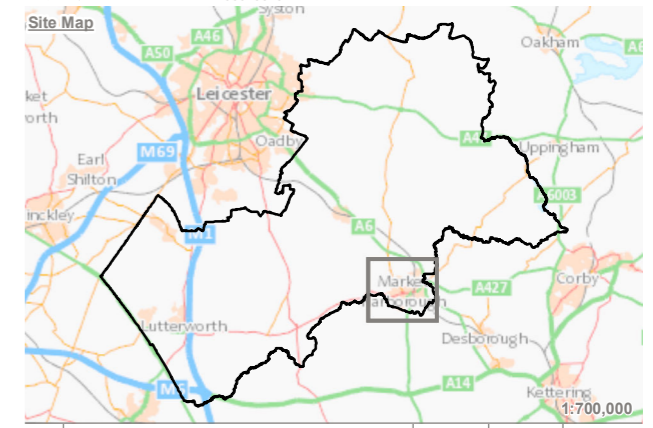
Harbrough District Boundary

Open Space Typology

- Allotments
- Amenity Greenspace
- Cemeteries and churchyards
- Civic Spaces
- Natural and Semi Natural Green Spaces
- Outdoor Sports Facilities
- Parks and Gardens
- Young People and Children



Reproduced by permission of Ordnance Survey on behalf of Her Majesty's Stationery Office.
 Contains OS data © Crown Copyright and database right 2021. All rights reserved.
 © 2021 Harbrough District Council
 Licence number 100023843



Rev	Description	SA	RM	Date
A	Typology change.	SA	RM	02/03/2021

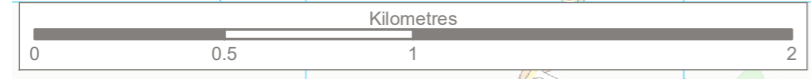
TEP | **THE ENVIRONMENT PARTNERSHIP**
 Genesis Centre, Birchwood Science Park, Warrington WA3 7BH
 Tel 01925 844004 e-mail tep@tep.uk.com www.tep.uk.com

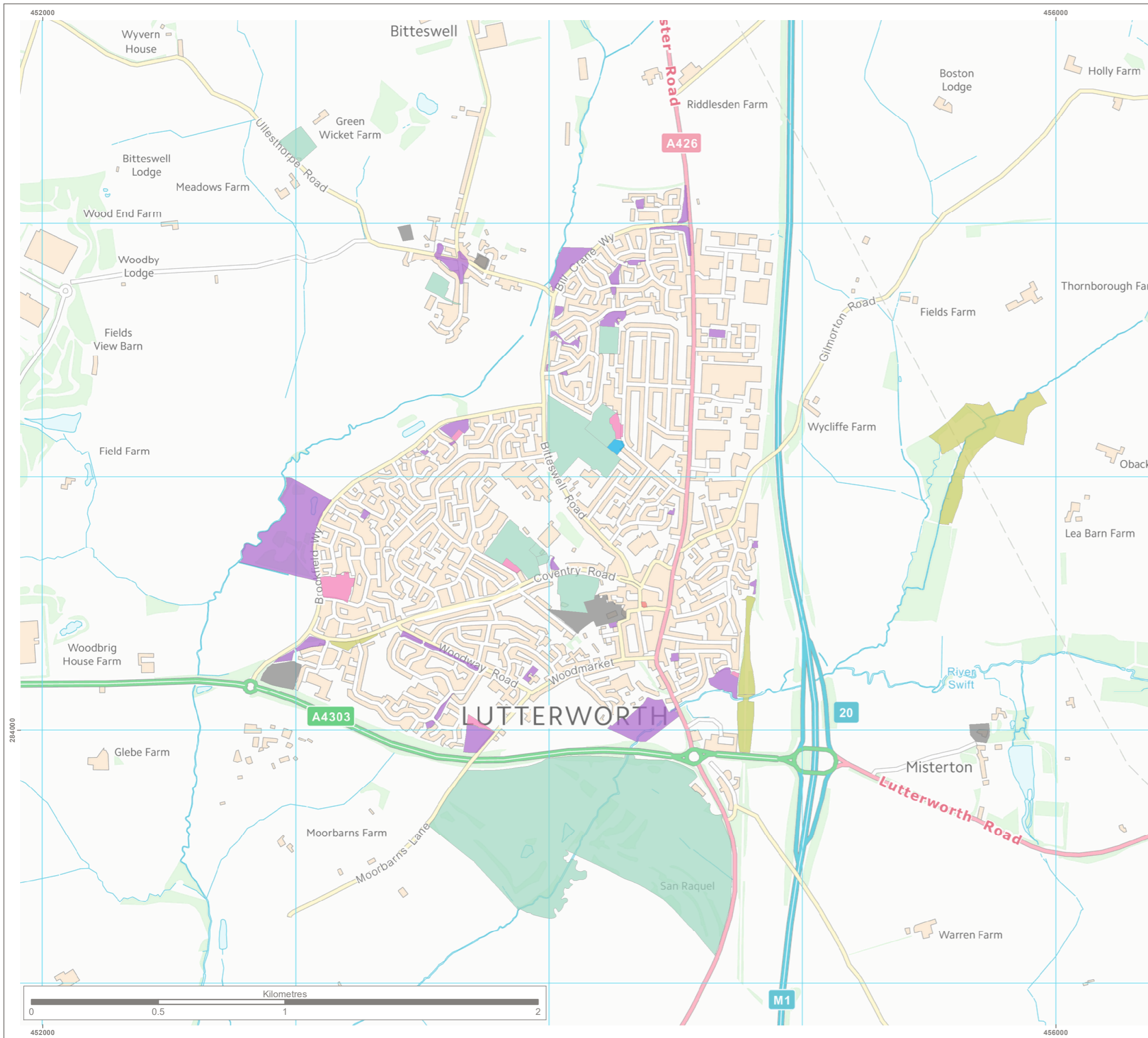
Project
Harbrough District Council Open Space Strategy

Title
Open Space Typology Map - Harbrough

Drawing Number
G8202.002A.5 Sheet 5 of 10

Drawn	Checked	Approved	Scale	Date
SA	JO	RM	1:20,000 @ A3	02/03/2021



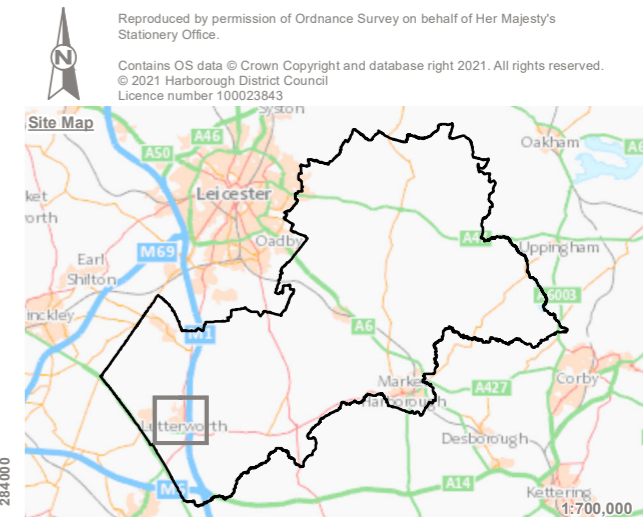


KEY

Harbourh District Boundary

Open Space Typology

- Allotments
- Amenity Greenspace
- Cemeteries and churchyards
- Civic Spaces
- Natural and Semi Natural Green Spaces
- Outdoor Sports Facilities
- Parks and Gardens
- Young People and Children



Rev	Description	SA	RM	Date
A	Typology change.			02/03/2021



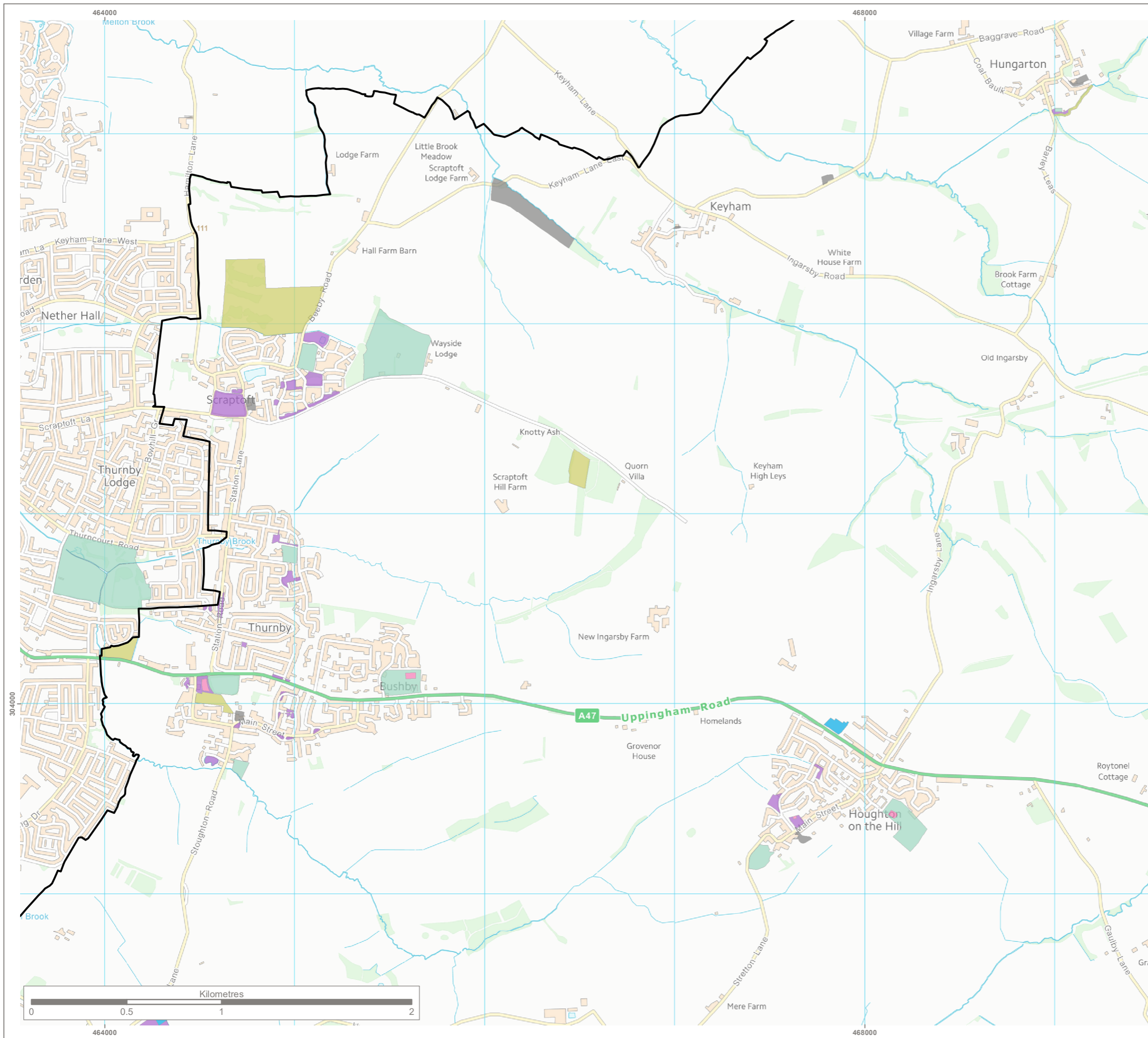
Genesis Centre, Birchwood Science Park, Warrington WA3 7BH
 Tel 01925 844004 e-mail tep@tep.uk.com www.tep.uk.com

Project
Harbourh District Council Open Space Strategy

Title
Open Space Typology Map - Lutterworth

Drawing Number
G8202.002A.6 Sheet 6 of 10

Drawn	Checked	Approved	Scale	Date
SA	JO	RM	1:15,000 @ A3	02/03/2021



KEY

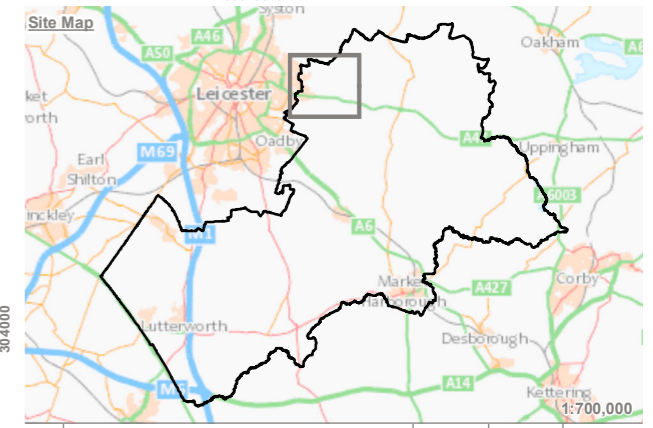
Harbrough District Boundary

Open Space Typology

- Allotments
- Amenity Greenspace
- Cemeteries and churchyards
- Civic Spaces
- Natural and Semi Natural Green Spaces
- Outdoor Sports Facilities
- Parks and Gardens
- Young People and Children



Reproduced by permission of Ordnance Survey on behalf of Her Majesty's Stationery Office.
 Contains OS data © Crown Copyright and database right 2021. All rights reserved.
 © 2021 Harbrough District Council
 Licence number 100023843



Rev	Description	SA	RM	Date
A	Typology change.			02/03/2021

TEP | **THE ENVIRONMENT PARTNERSHIP**
 Genesis Centre, Birchwood Science Park, Warrington WA3 7BH
 Tel 01925 844004 e-mail tep@tep.uk.com www.tep.uk.com

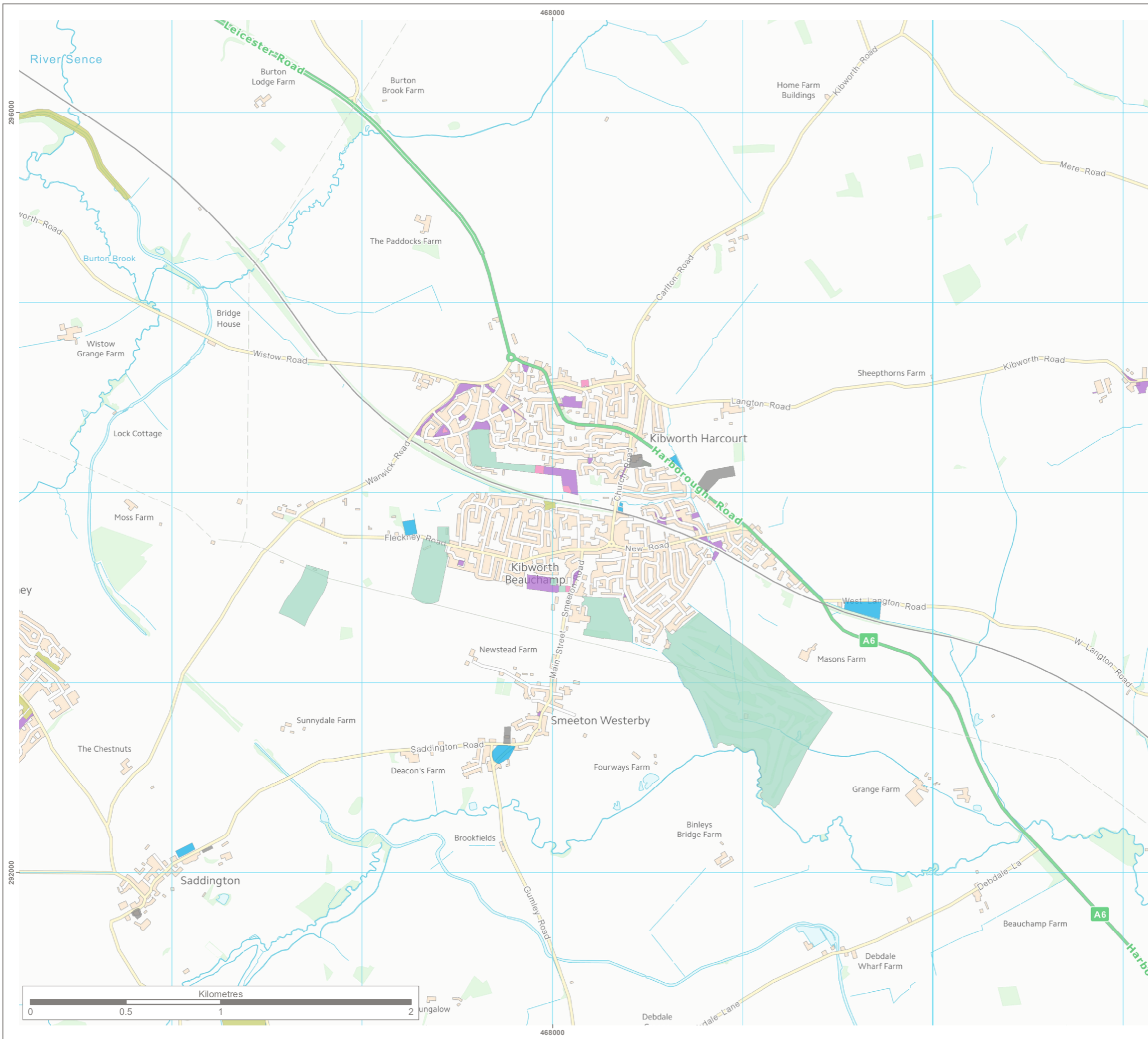
Project
Harbrough District Council Open Space Strategy

Title
Open Space Typology Map - Thumby

Drawing Number
G8202.002A.7 Sheet 7 of 10

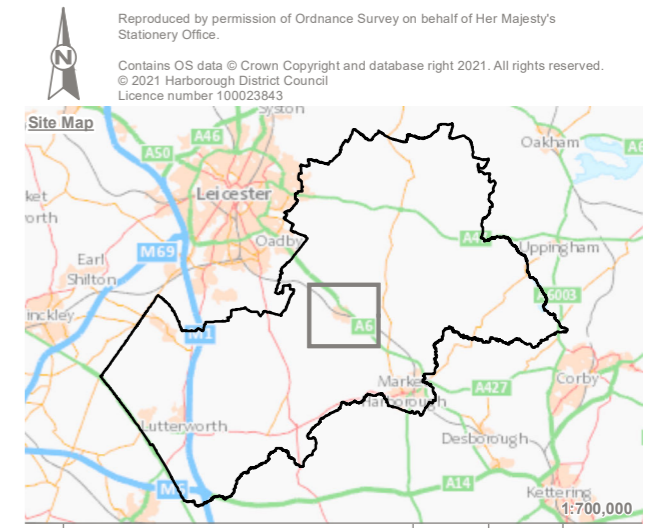
Drawn	Checked	Approved	Scale	Date
SA	JO	RM	1:20,000 @ A3	02/03/2021





KEY

- Harborough District Boundary
- Open Space Typology**
- Allotments
- Amenity Greenspace
- Cemeteries and churchyards
- Civic Spaces
- Natural and Semi Natural Green Spaces
- Outdoor Sports Facilities
- Parks and Gardens
- Young People and Children



Rev	Description	SA	RM	02/03/2021
A	Typology change.			

TEP | **THE ENVIRONMENT PARTNERSHIP**

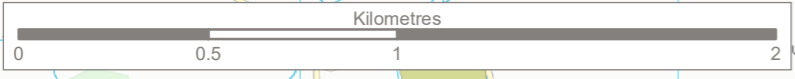
Genesis Centre, Birchwood Science Park, Warrington WA3 7BH
 Tel 01925 844004 e-mail tep@tep.uk.com www.tep.uk.com

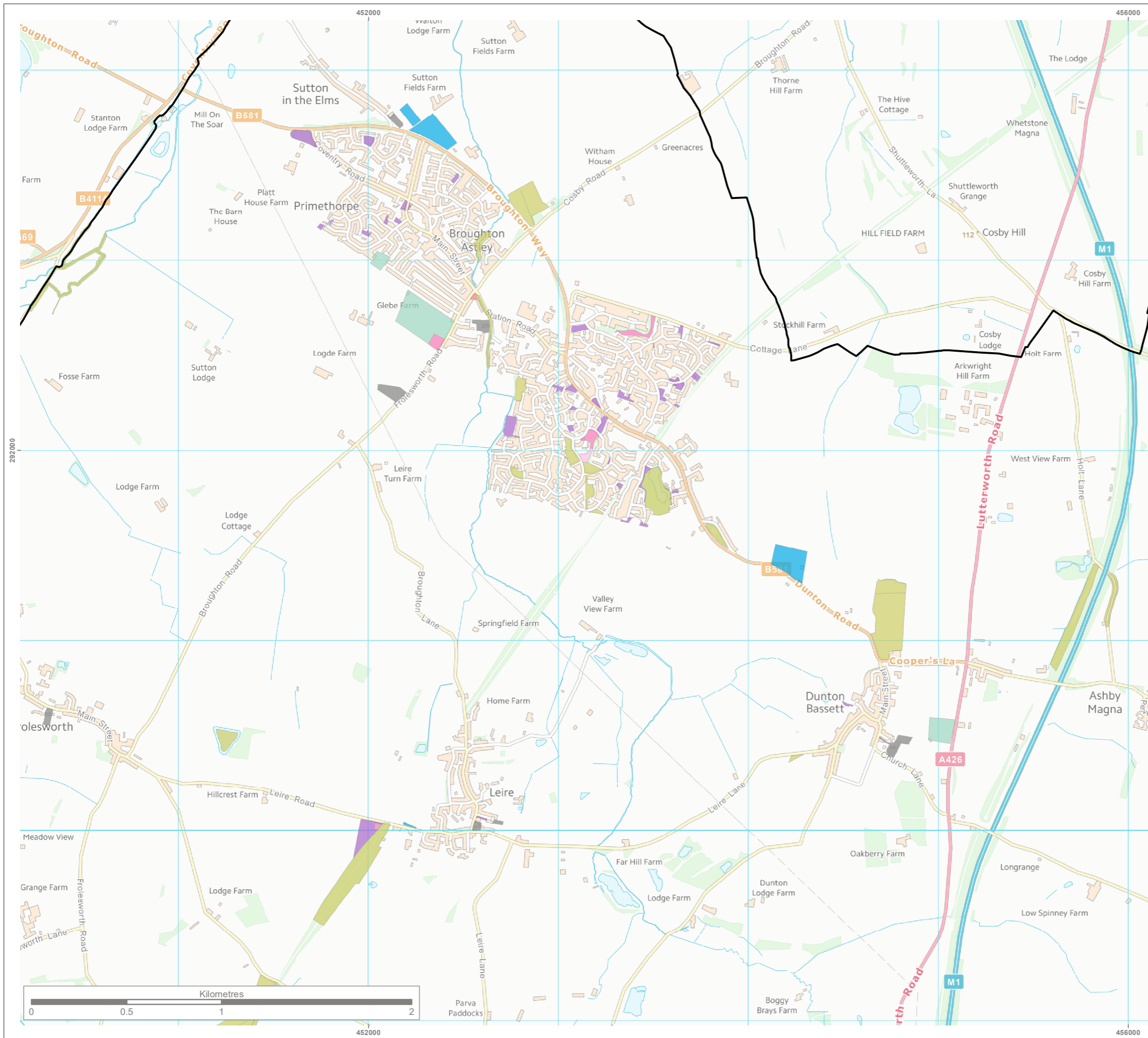
Project
Harborough District Council Open Space Strategy

Title
Open Space Typology Map - Kibworth Harcourt

Drawing Number
G8202.002A.8 Sheet 8 of 10

Drawn	Checked	Approved	Scale	Date
SA	JO	RM	1:20,000 @ A3	02/03/2021



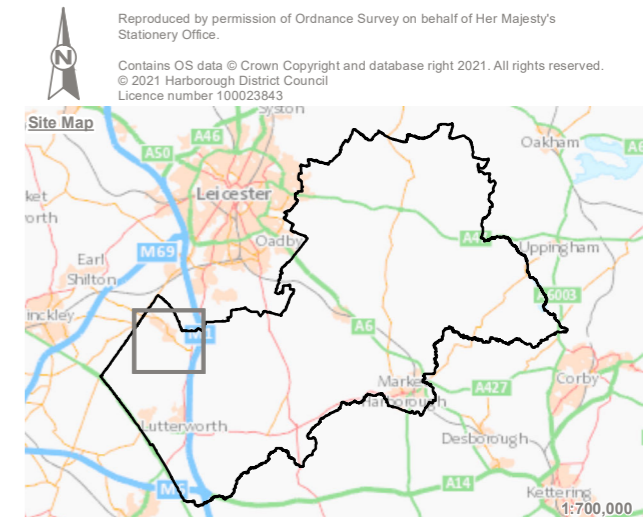


KEY

Harbrough District Boundary

Open Space Typology

- Allotments
- Amenity Greenspace
- Cemeteries and churchyards
- Civic Spaces
- Natural and Semi Natural Green Spaces
- Outdoor Sports Facilities
- Parks and Gardens
- Young People and Children



A	Typology change.	SA	RM	02/03/2021
Rev	Description	Drawn	Approved	Date

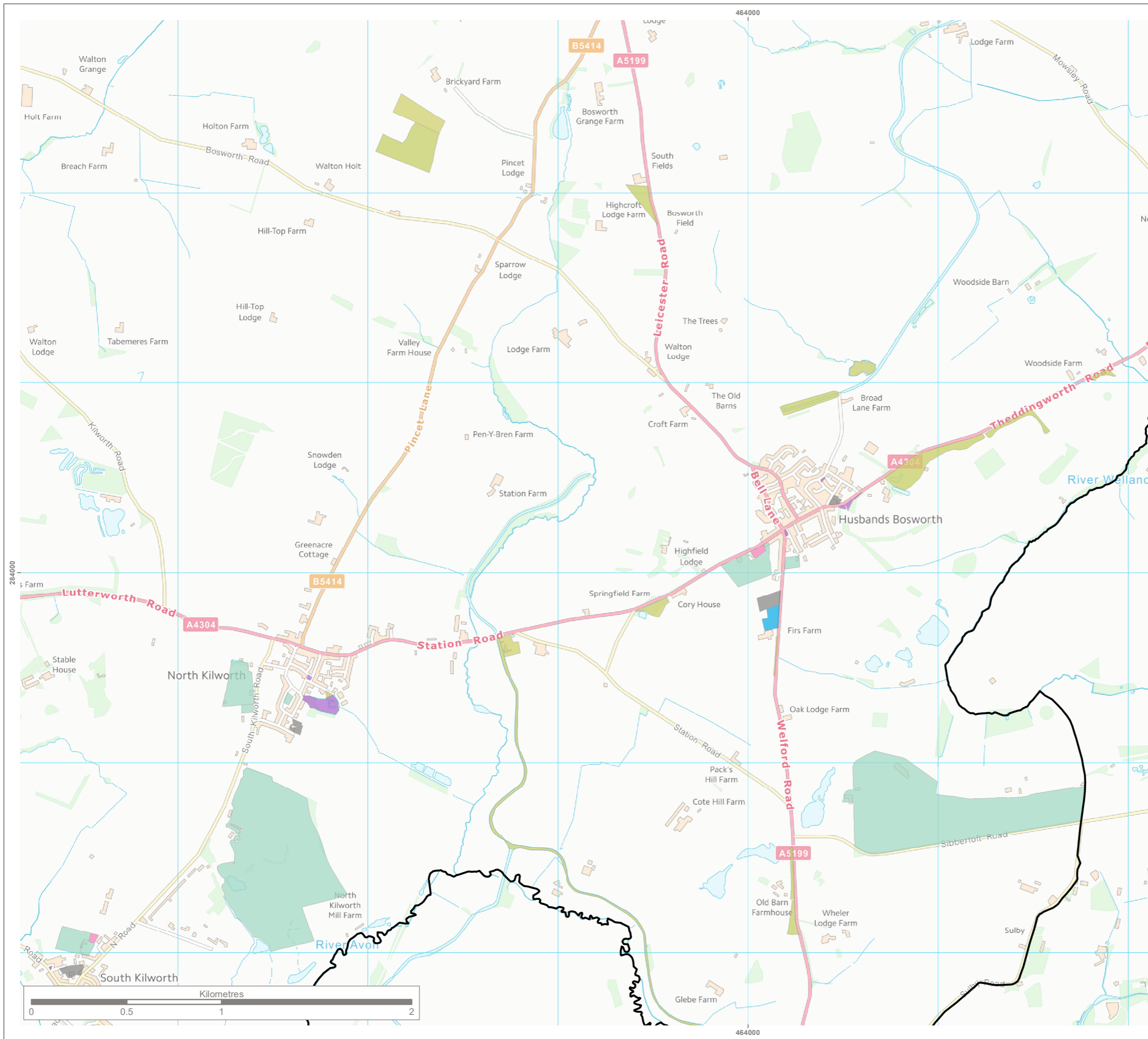
TEP | **THE ENVIRONMENT PARTNERSHIP**
 Genesis Centre, Birchwood Science Park, Warrington WA3 7BH
 Tel 01925 844004 e-mail tep@tep.uk.com www.tep.uk.com

Project
Harbrough District Council Open Space Strategy

Title
Open Space Typology Map - Broughton Astley

Drawing Number
G8202.002A.9 Sheet 9 of 10

Drawn	Checked	Approved	Scale	Date
SA	JO	RM	1:20,000 @ A3	02/03/2021

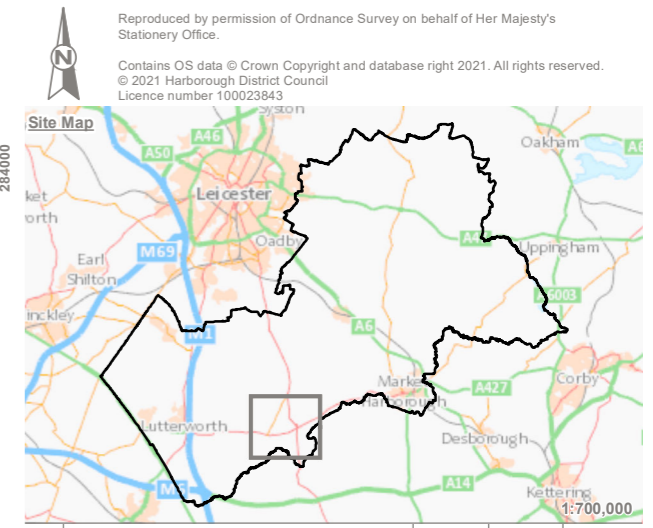


KEY

Harbourh District Boundary

Open Space Typology

- Allotments
- Amenity Greenspace
- Cemeteries and churchyards
- Civic Spaces
- Natural and Semi Natural Green Spaces
- Outdoor Sports Facilities
- Parks and Gardens
- Young People and Children



Rev	Description	SA	RM	Date
A	Typology change.			02/03/2021

TEP | **THE ENVIRONMENT PARTNERSHIP**

Genesis Centre, Birchwood Science Park, Warrington WA3 7BH
 Tel 01925 844004 e-mail tep@tep.uk.com www.tep.uk.com

Project
Harborough District Council Open Space Strategy

Title
Open Space Typology Map - Husbands Bosworth

Drawing Number
G8202.002A.10 Sheet 10 of 10

Drawn	Checked	Approved	Scale	Date
SA	JO	RM	1:20,000 @ A3	02/03/2021