

DISTRICT OF  
HARBOROUGH

# ANNUAL PARISH LIAISON MEETING 2016



# Welcome & Introduction



## **Cllr Blake Pain**

- Leader of the Council
- Lubenham Ward



## **Cllr Michael Rickman**

- Performance Management & Rural
- Nevill Ward



SUPPORT  
**MARKET  
HARBOROUGH**



THE GREAT  
BRITISH  
**HIGH  
STREET**  
OF THE YEAR AWARDS

2016

**FINALIST**

VOTE NOW AT  
[www.thegreatbritishhighstreet.co.uk](http://www.thegreatbritishhighstreet.co.uk)

**#GBHighSt**



# Aims for this evening



- Opportunities to network
- HDC Financial and Service outlook
- Update on key workstreams
- Discuss key and emerging topics
  - Parish case studies
- Be the #1 parish (at Kurling)

# Tonight's Agenda



- 18:30 Welcome & Introductions
- 18:35 Review of Parish Liaison
- 18:45 Financial and Service Outlook
- 19:00 Breakout session 1
- 19:30 Breakout session 2
- 20:00 Breakout session 3

# Parish Liaison Review

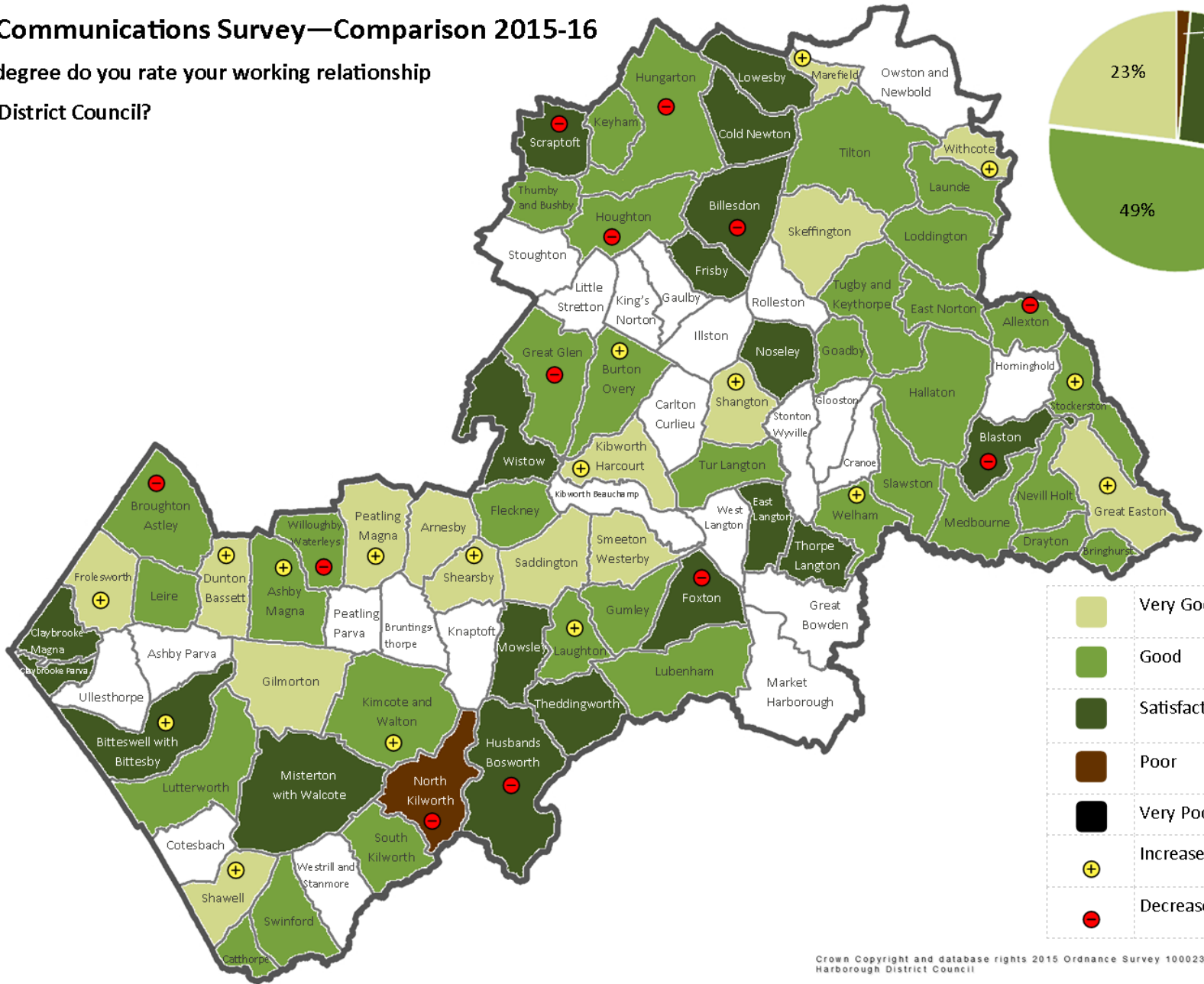


- Over 400 enquiries to Parish Officer
- Weekly updates of Chair/clerks directory
- Council briefings, training & One-off events
- Work with LRALC to support parishes
- Annual Survey of parishes

= Quarter of parishes now rate working relations as satisfactory, half rate as good and another quarter very good. (70% return rate)

# Parish Communications Survey—Comparison 2015-16

To what degree do you rate your working relationship with the District Council?



# Excellent Parish Liaison



*“It’s all about communication. We keep Harborough District Council informed concerning any queries and they respond quickly with feedback. We also regularly talk to other Parishes for help and support and share best practice and attend as many meetings as possible”.*

Parish Council



# Time for Change – Financial & Service Outlook

Simon Riley

Head of Finance and Corporate  
Services

# Changing Financial Landscape



2017

2018

2019

# Pressures



**Reduction in Government Grant £777K**



**Reduction in New Homes Bonus £1 Million**



**Pay and Pension Pressures £660K**



**Inflation £300K**



**Service Developments and Investment in Assets £TBC**



# Our Approach



Increase partnership working



Deliver VFM and identify >£0.7 million of Efficiencies



Maximise Income and identify new areas for charging/trading

2017 Prepare

2018 Deliver

2019 Stabalise

# Preparing

- What services matter for residents and Businesses?
- Who is best placed to provide the service?
- Are there opportunities for joint provision and funding?
- There are Services that Harborough may be under pressure to deliver in the future?
- Do Local Communities wish to pick up services that others can no longer fund or could be delivered in another way?

# Delivering

- Additional Green Waste Charging £200K
- Efficiencies & Organisational Change £200K to £300K
- Income Maximisation £300K to £350K
- Partnership Savings
- Transfer of Functions £TBC

# Stabilising

- Sustainable Economic and Housing Growth shaped by the Local Plan
- Determining the services (and by whom?) that can be delivered in the future for residents and businesses in response to reduced funding
- Reducing use of reserves to support budget strategy
- Demonstrating Value for Money for all services

# Council Tax/Business Rates

- Still constrained by Government – plan not to increase each year by more than 1.99%
- Risk that capping will be applied to parishes based on precept or budget size
- Council Tax and Retained Business Rates will be the main source of funding for public services in the future



# Discussion Topics



- **Neighbourhood Planning**
  - Q&A, sharing knowledge and building on success
- **Responsible Dog Ownership**
  - How to target hotspots and promote responsibility
- **Grounds Maintenance**
  - Ensuring value, sustainability and responsiveness