

Preliminary Landscape Assessment  
of  
Alternative Strategic Development Areas  
on behalf of  
Harborough District Council

Appendix 4 – Figures and Photographs

**July 2016**

## Contents

### Lutterworth East

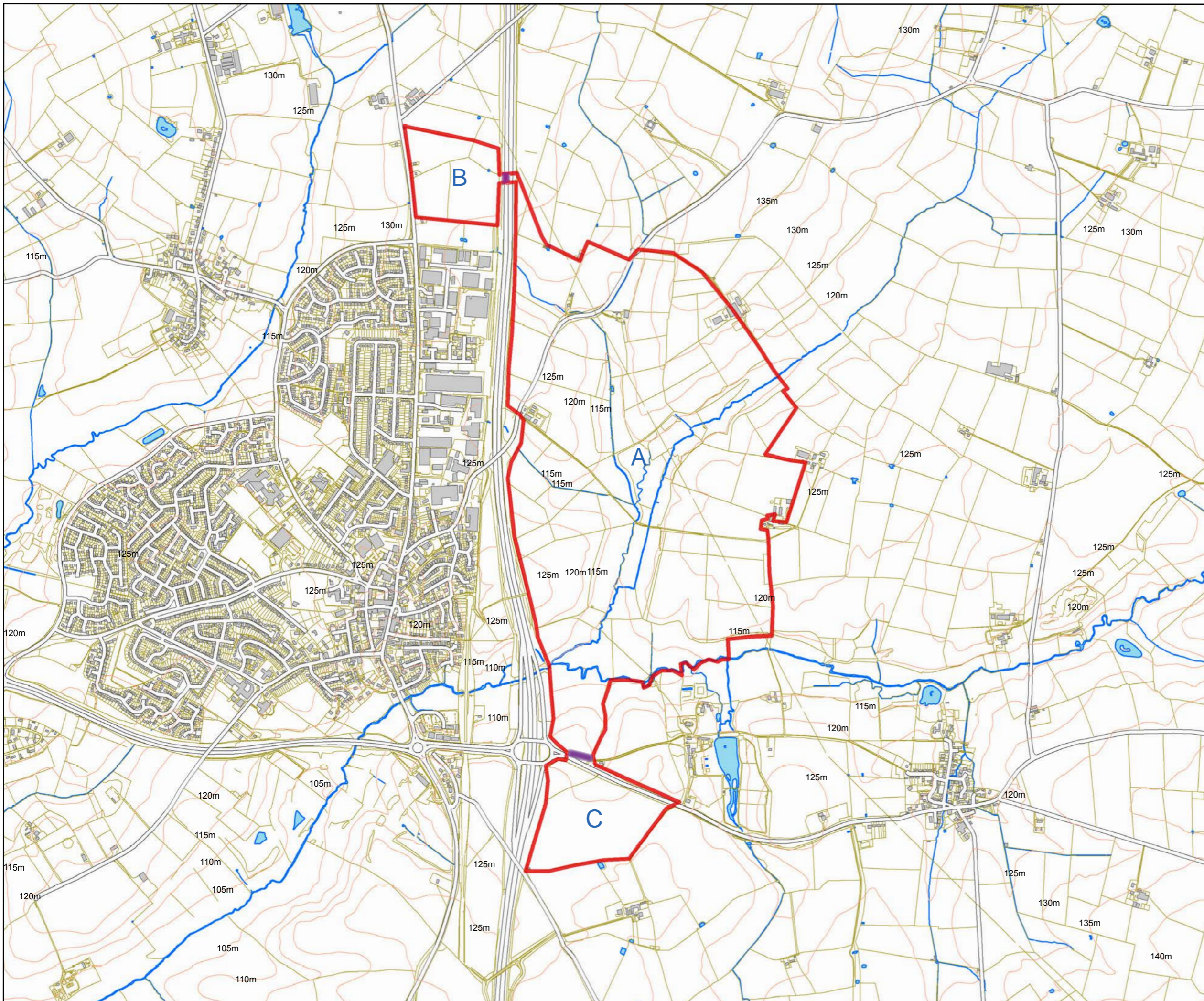
- Figure LE01 Location Plan
- Figure LE02 Aerial Photograph
- Figure LE03 1904 OS Plan
- Figure LE04 1965 OS Plan
- Figure LE05 Local Viewpoints
- Figure LE06 Wider Viewpoints
- Figure LE07 Constraints
- Figure LE08 Preliminary Landscape Strategy
- Lutterworth East Viewpoints

### Kibworth Harcourt

- Figure KH01 Location Plan
- Figure KH02 Aerial Photograph
- Figure KH03 1904 OS Plan
- Figure KH04 1952-53 OS Plan
- Figure KH05 Local Viewpoints
- Figure KH06 Wider Viewpoints
- Figure KH07 Constraints
- Figure KH08 Preliminary Landscape Strategy
- Kibworth Harcourt Viewpoints

### Scraptoft

- Figure S01 Location Plan
- Figure S02 Aerial Photograph
- Figure S03 1904 OS Plan
- Figure S04 1956-66 OS Plan
- Figure S05 Local Viewpoints
- Figure S06 Wider Viewpoints
- Figure S07 Constraints
- Figure S08 Preliminary Landscape Strategy
- Scraptoft Viewpoints



**Key**

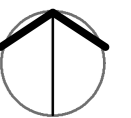
- SDA Boundary
- Sub Areas

**Alternative SDA Study  
Lutterworth East**

Site

**Figure LE01**

Scale 1:15,000 @ A3  
July 2016





**Key**

 SDA Boundary

 Sub Areas

---

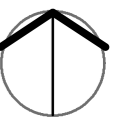
**Alternative SDA Study  
Lutterworth East**

Aerial Photograph (2011)

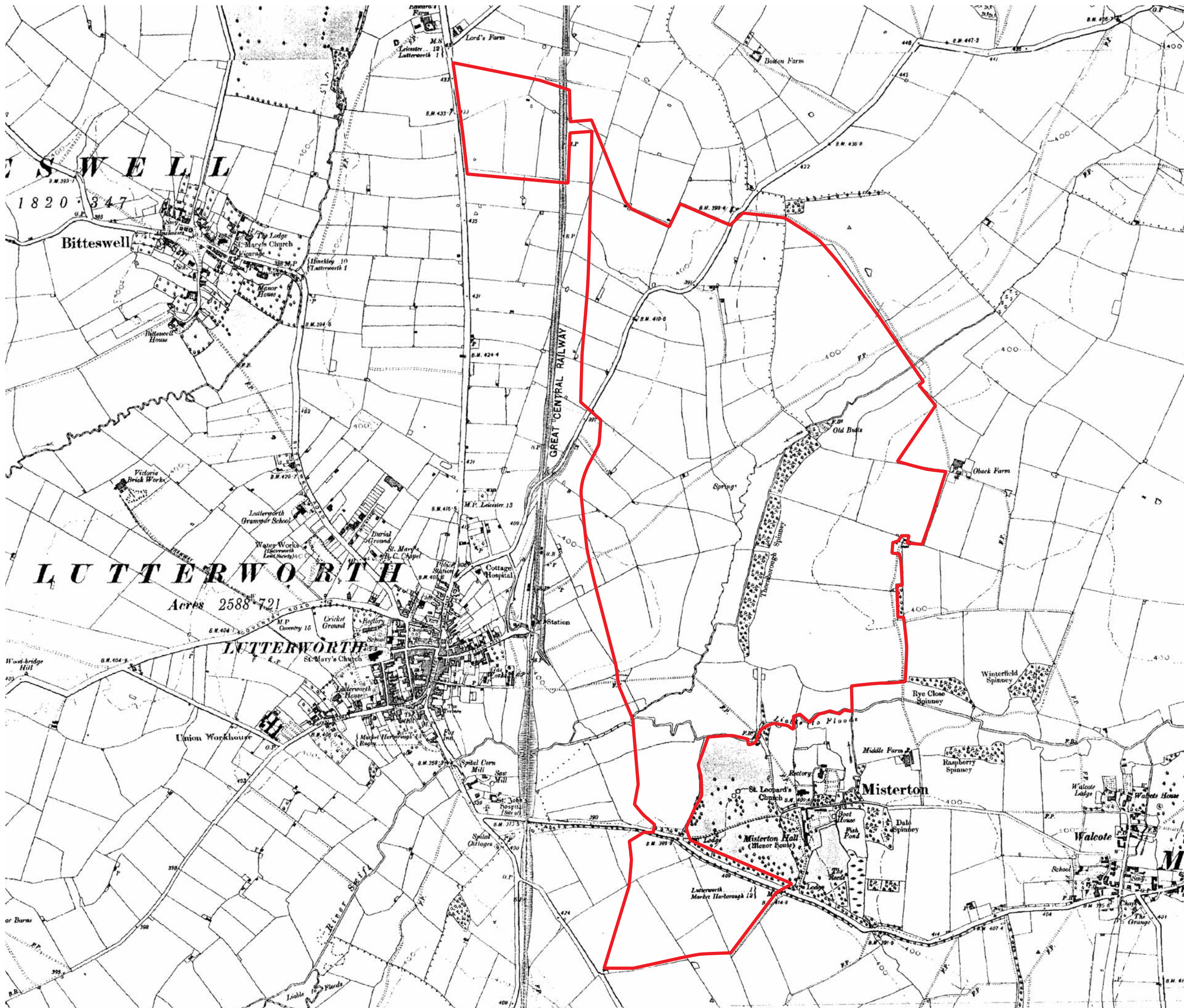
---

**Figure LE02**

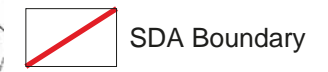
Scale NTS  
July 2016



Source: Google Maps



Key



Alternative SDA Study  
Lutterworth East

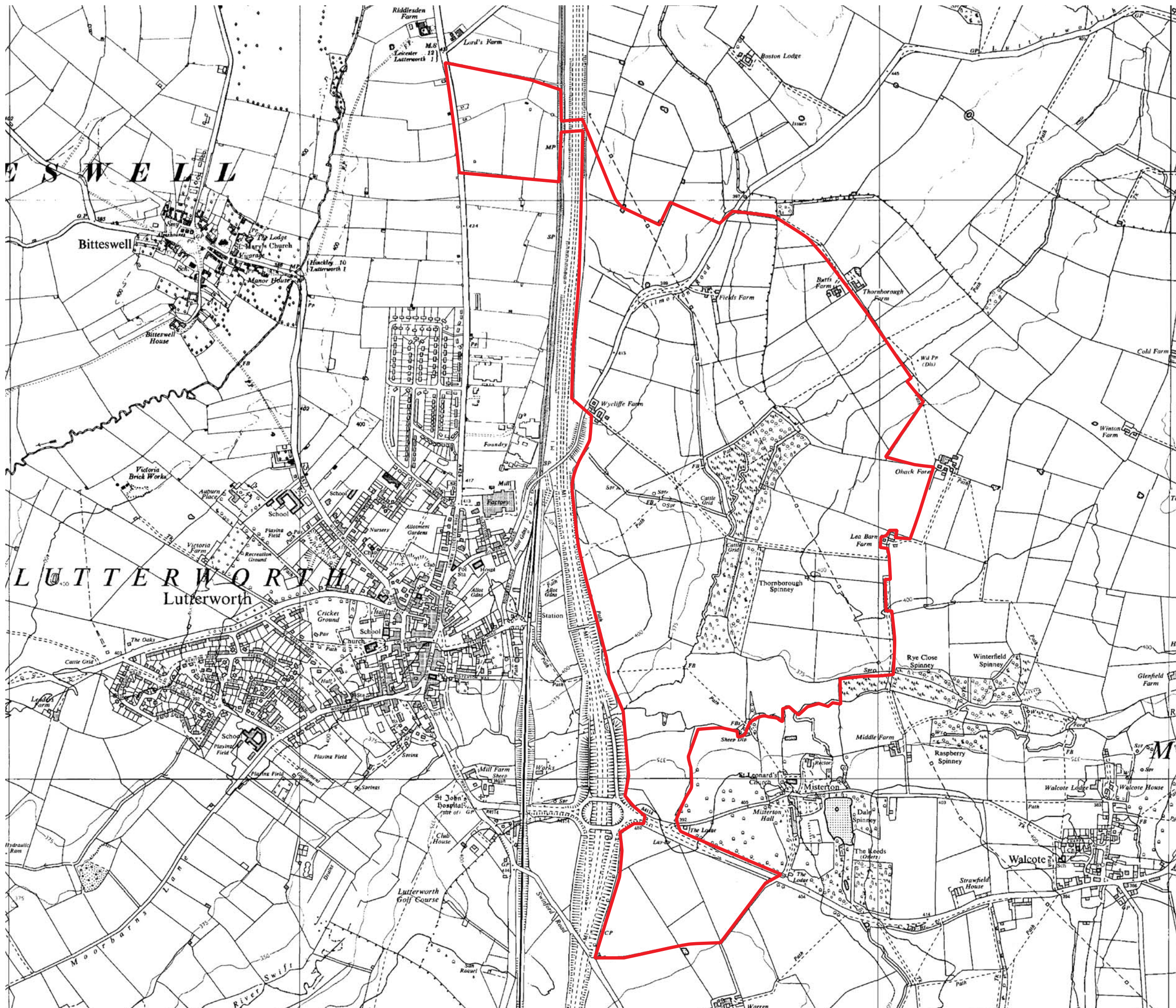
OS Map 1904

Figure LE03


Scale: NTS

July 2016





Key

 SDA Boundary

Alternative SDA Study  
Lutterworth East

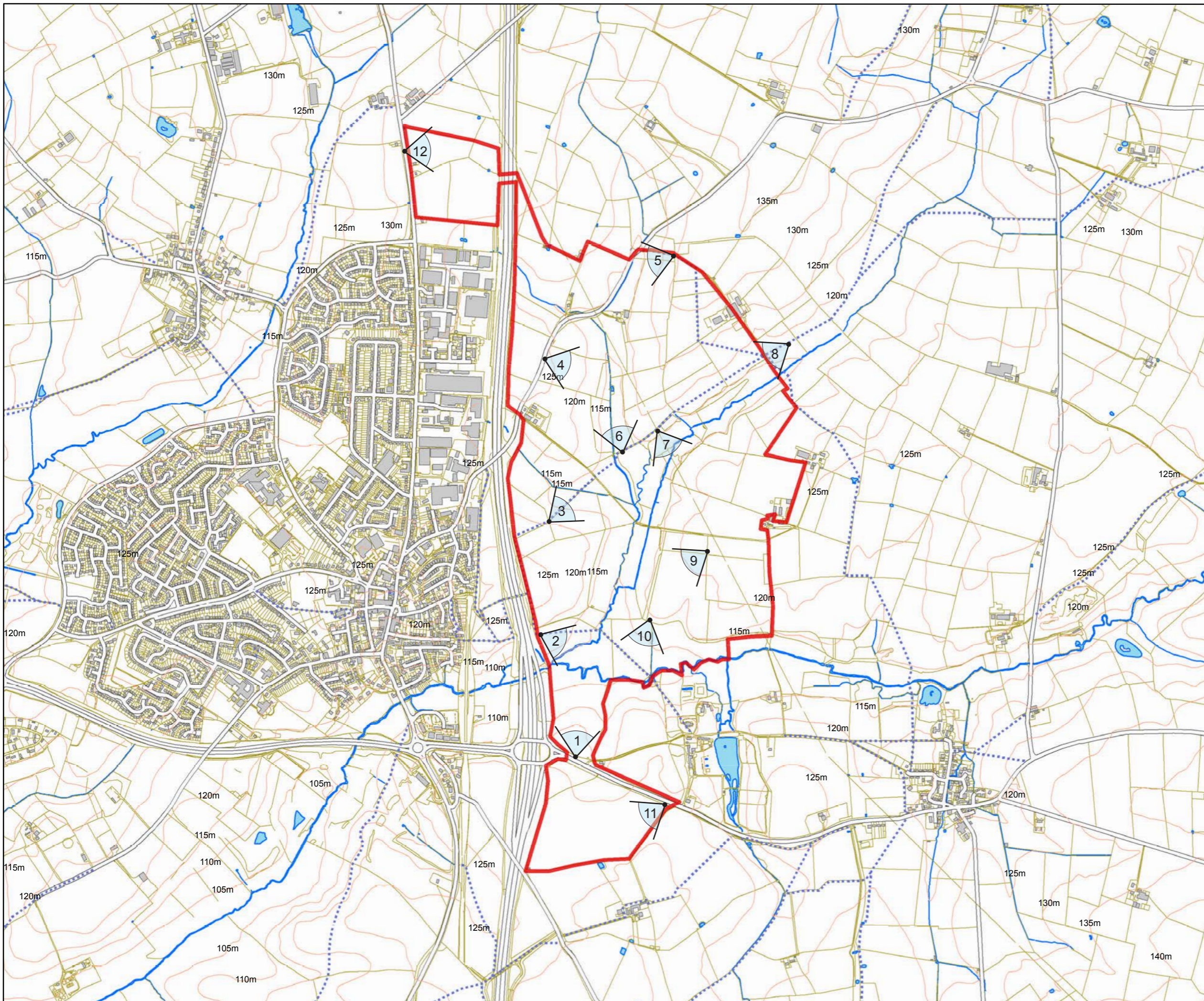
OS Map 1965 - 1968

Figure LE04

Scale: NTS

July 2016





**Key**

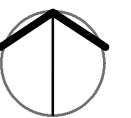
- SDA Boundary
- Public Right of Way
- 1 Viewpoints

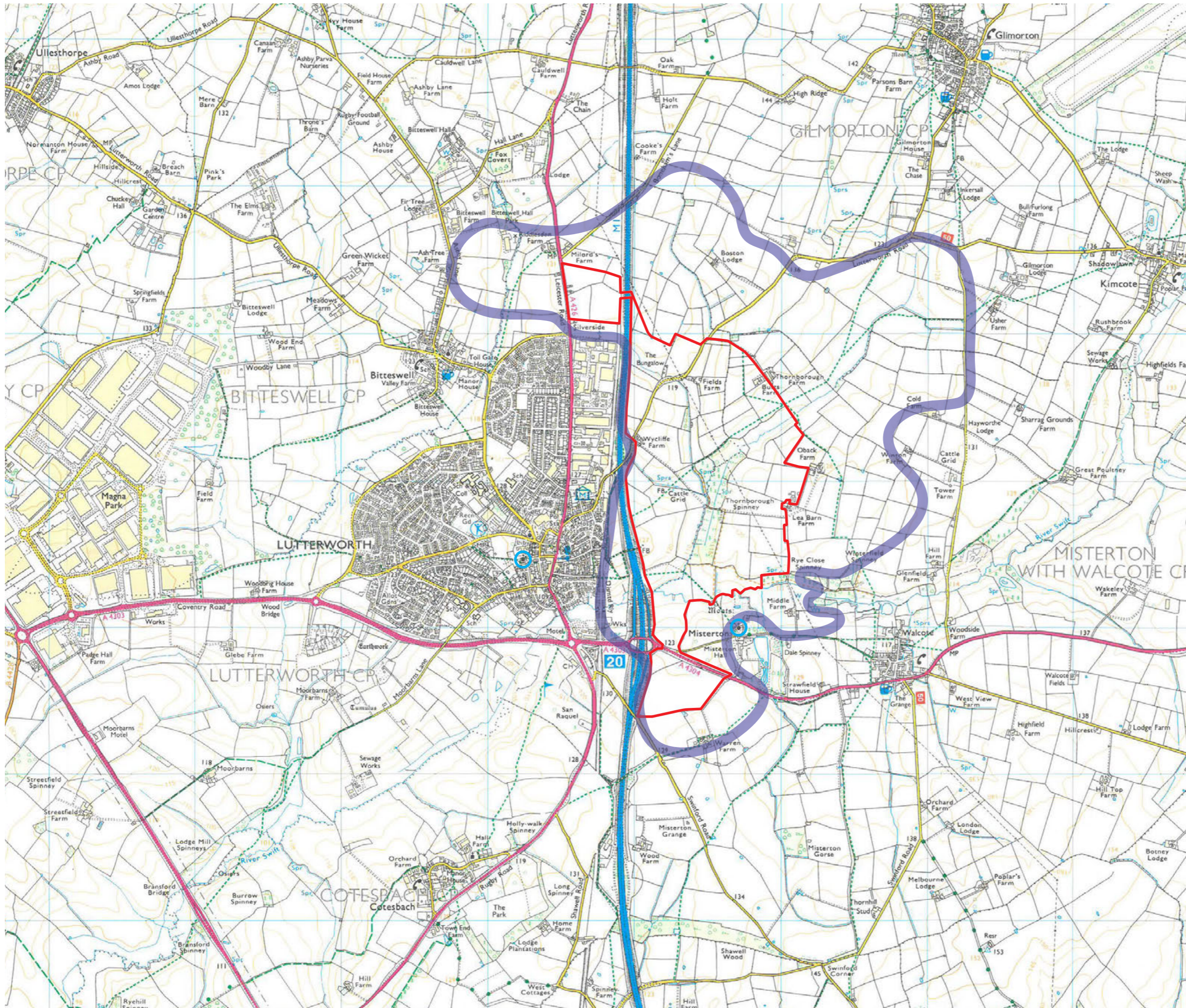
**Alternative SDA Study  
Lutterworth East**

Local Viewpoints




**Figure LE05**

Scale 1:15,000 @ A3  
July 2016





**Key**

-  SDA Boundary
-  Approximate ZVI (Zone of Visual Influence)
-  Landmark Building

**Alternative SDA Study  
Lutterworth East**

Wider Viewpoints

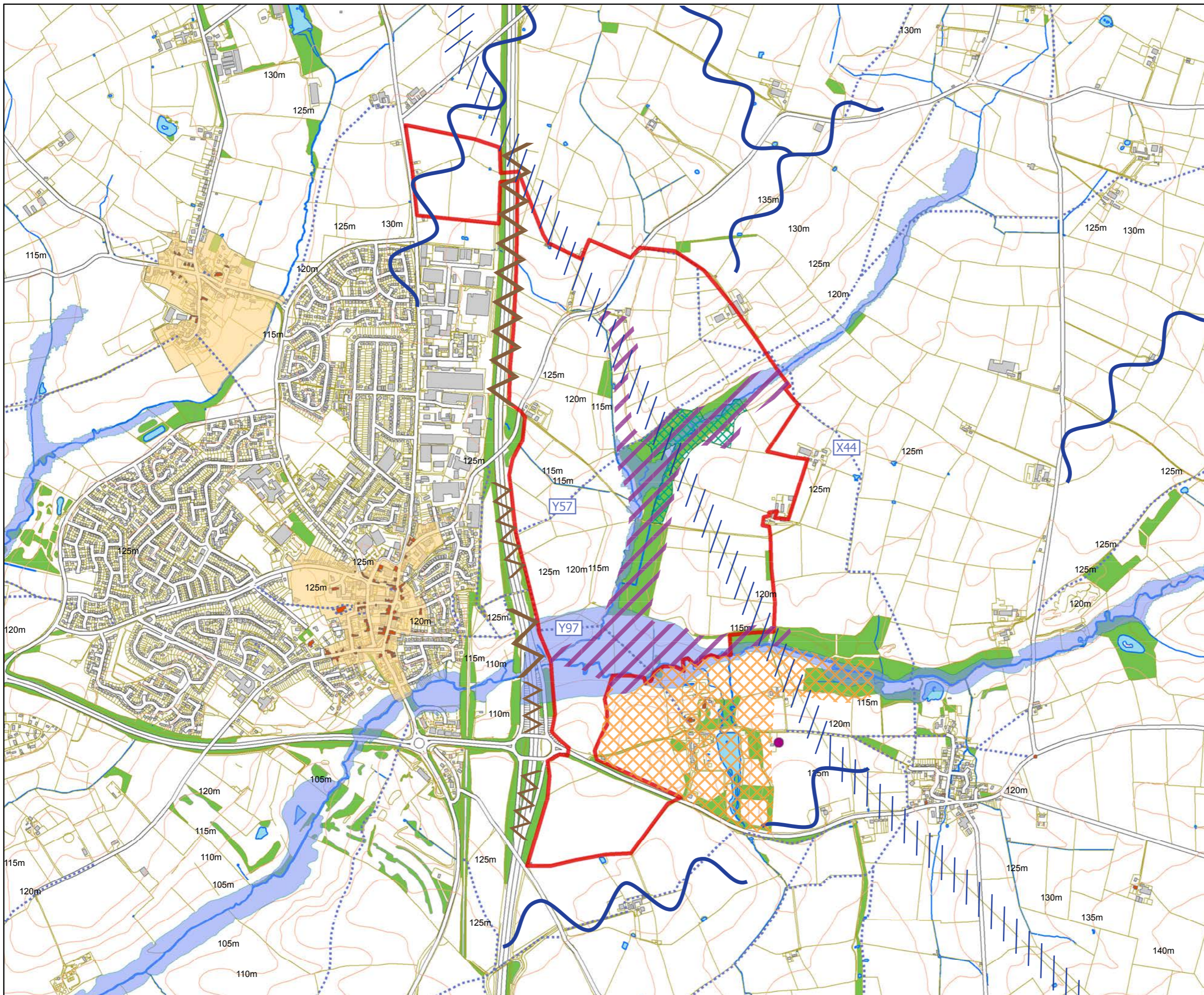
**Figure LE06**

Scale: NTS

July 2016







- Key**
- SDA Boundary
  - Listed Buildings
  - Conservation Area
  - Scheduled Monument
  - SSSI
  - Flood Zone 3
  - Green Infrastructure
  - Public Right of Way
  - High Voltage Cables
  - M1 - Traffic + Noise
  - M1 - Noise
  - Ridges
  - Sensitive Valley
  - Sensitive settlement + Setting

**Alternative SDA Study  
Lutterworth East**

Constraints

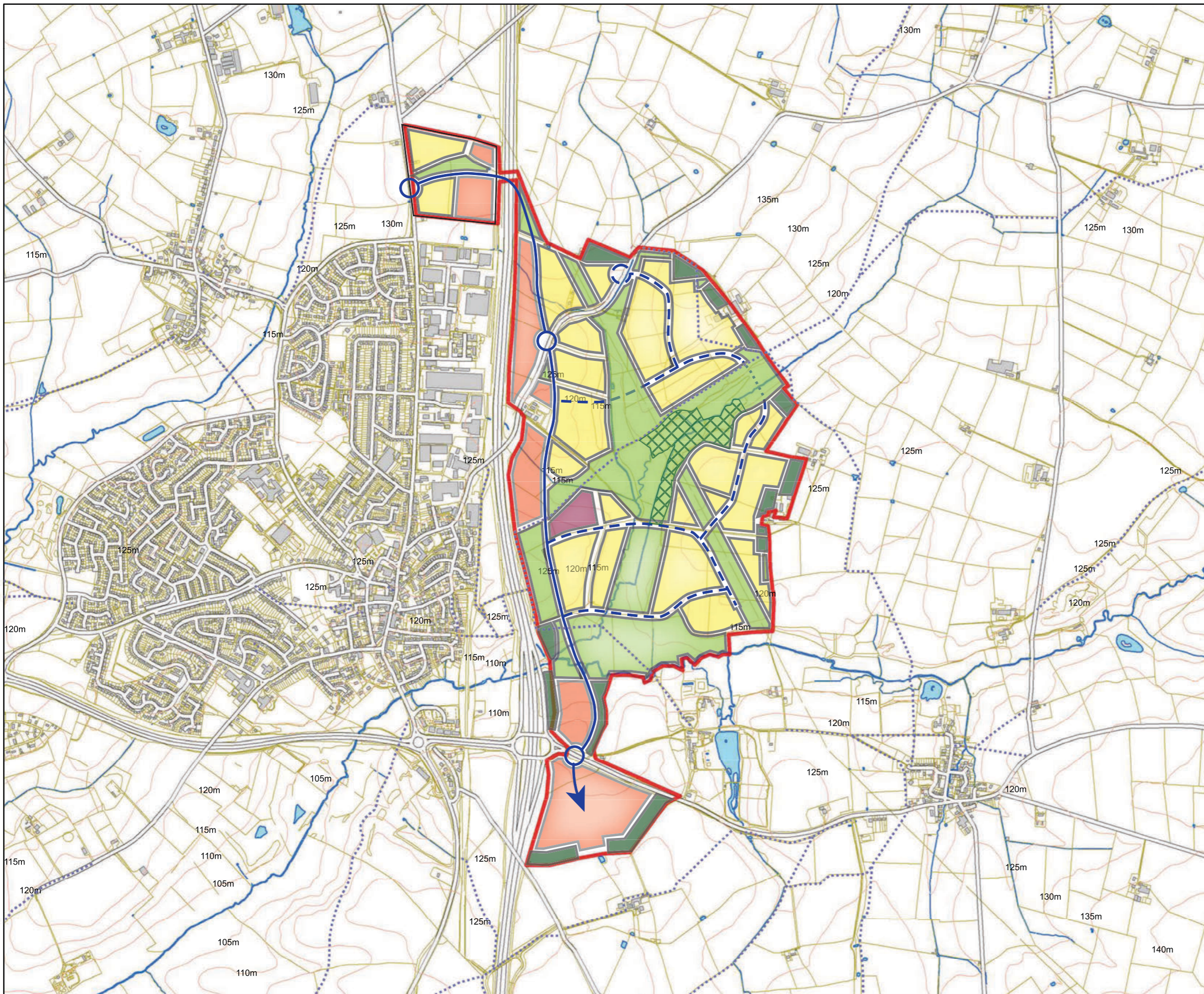
**Figure LE07**

Scale 1:15,000 @ A3  
July 2016



This map is reproduced from Ordnance Survey material with the permission of Ordnance Survey on behalf of the Controller of Her Majesty's Stationery Office © Crown Copyright. Unauthorised reproduction infringes Crown Copyright and may lead to prosecution or civil proceedings. Harborough District Council 100023843 2011





**Key**

- SDA Boundary
- Public Right of Way
- Lutterworth Bypass
- Site Access
- Residential
- Strategic Green Infrastructure
- Strategic Planting
- Commercial
- Community Facilities
- SSSI

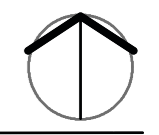
**Alternative SDA Study  
Lutterworth East**

Preliminary Landscape Strategy

---

**Figure LE08**

Scale 1:15,000 @ A3  
July 2016



This map is reproduced from Ordnance Survey material with the permission of Ordnance Survey on behalf of the Controller of Her Majesty's Stationery Office © Crown Copyright. Unauthorised reproduction infringes Crown Copyright and may lead to prosecution or civil proceedings. Harborough District Council 100023843 2011



Page intentionally blank



View from A4304 looking north - Lutterworth - **Viewpoint 1**



View from footpath Y97 looking south-east - Lutterworth - **Viewpoint 2**

Page intentionally blank



View from footpath Y57 looking east - Lutterworth - **Viewpoint 3**



View from Gilmorton Road looking east - Lutterworth - **Viewpoint 4**

Page intentionally blank



View from track near Butts Farm looking west - Lutterworth - **Viewpoint 5**



View from footpath Y57 looking north - Lutterworth - **Viewpoint 6**



Page intentionally blank



View from footpath Y57 looking south - Lutterworth - **Viewpoint 7**



View from footpath Y57 looking south-west - Lutterworth - **Viewpoint 8**

Page intentionally blank



View near Lea Barn Farm looking south-west - Lutterworth - **Viewpoint 9**



View near River Swift looking south - Lutterworth - **Viewpoint 10**

Page intentionally blank



View from track leading to Warren Farm looking west - Lutterworth - **Viewpoint 11**



View from A426 looking east - Lutterworth - **Viewpoint 12**